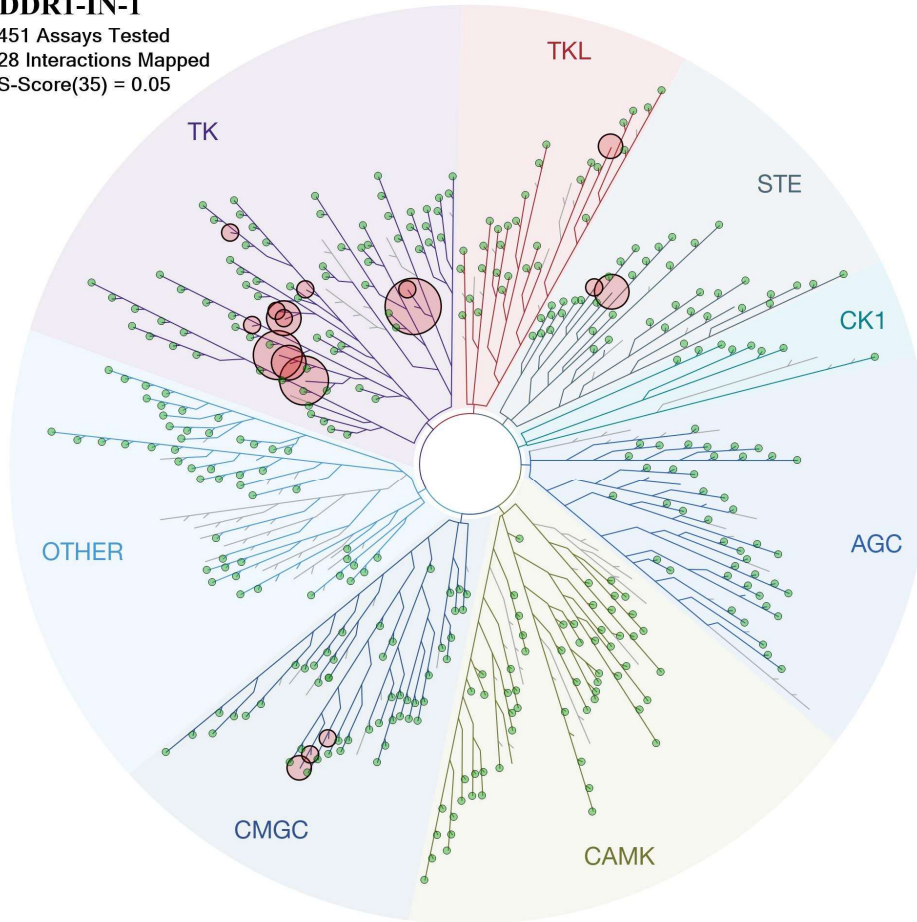


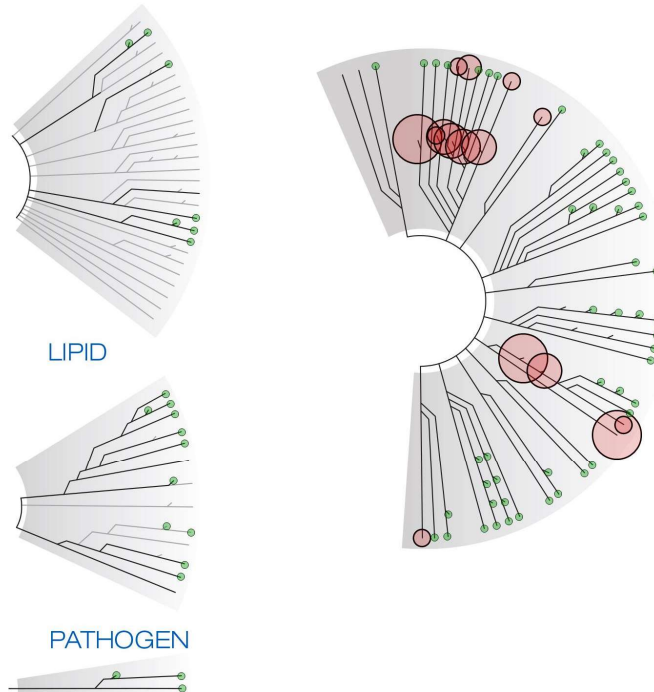
DDR1-IN-1

451 Assays Tested
28 Interactions Mapped
S-Score(35) = 0.05



ATYPICAL

MUTANT



Compound Name	DiscoverX Gene Symbol	Entrez Gene Symbol	Percent Control	Compound Concentration (nM)
DDR1-IN-1	AAK1	AAK1	100	1000
DDR1-IN-1	ABL1(E255K)-phosphorylated	ABL1	74	1000
DDR1-IN-1	ABL1(F317I)-nonphosphorylated	ABL1	1	1000
DDR1-IN-1	ABL1(F317I)-phosphorylated	ABL1	24	1000
DDR1-IN-1	ABL1(F317L)-nonphosphorylated	ABL1	2.9	1000
DDR1-IN-1	ABL1(F317L)-phosphorylated	ABL1	9.6	1000
DDR1-IN-1	ABL1(H396P)-nonphosphorylated	ABL1	0.35	1000
DDR1-IN-1	ABL1(H396P)-phosphorylated	ABL1	62	1000
DDR1-IN-1	ABL1(M351T)-phosphorylated	ABL1	55	1000
DDR1-IN-1	ABL1(Q252H)-nonphosphorylated	ABL1	3	1000
DDR1-IN-1	ABL1(Q252H)-phosphorylated	ABL1	49	1000
DDR1-IN-1	ABL1(T315I)-nonphosphorylated	ABL1	16	1000
DDR1-IN-1	ABL1(T315I)-phosphorylated	ABL1	88	1000
DDR1-IN-1	ABL1(Y253F)-phosphorylated	ABL1	38	1000
DDR1-IN-1	ABL1-nonphosphorylated	ABL1	2.1	1000
DDR1-IN-1	ABL1-phosphorylated	ABL1	34	1000
DDR1-IN-1	ABL2	ABL2	20	1000
DDR1-IN-1	ACVR1	ACVR1	100	1000
DDR1-IN-1	ACVR1B	ACVR1B	100	1000
DDR1-IN-1	ACVR2A	ACVR2A	100	1000
DDR1-IN-1	ACVR2B	ACVR2B	100	1000
DDR1-IN-1	ACVRL1	ACVRL1	100	1000
DDR1-IN-1	ADCK3	CABC1	92	1000
DDR1-IN-1	ADCK4	ADCK4	81	1000
DDR1-IN-1	AKT1	AKT1	94	1000
DDR1-IN-1	AKT2	AKT2	100	1000
DDR1-IN-1	AKT3	AKT3	89	1000
DDR1-IN-1	ALK	ALK	100	1000
DDR1-IN-1	AMPK-alpha1	PRKAA1	100	1000
DDR1-IN-1	AMPK-alpha2	PRKAA2	100	1000
DDR1-IN-1	ANKK1	ANKK1	100	1000
DDR1-IN-1	ARK5	NUAK1	100	1000
DDR1-IN-1	ASK1	MAP3K5	100	1000
DDR1-IN-1	ASK2	MAP3K6	100	1000
DDR1-IN-1	AURKA	AURKA	100	1000
DDR1-IN-1	AURKB	AURKB	100	1000
DDR1-IN-1	AURKC	AURKC	91	1000
DDR1-IN-1	AXL	AXL	98	1000
DDR1-IN-1	BIKE	BMP2K	100	1000
DDR1-IN-1	BLK	BLK	93	1000
DDR1-IN-1	BMPR1A	BMPR1A	100	1000
DDR1-IN-1	BMPR1B	BMPR1B	100	1000
DDR1-IN-1	BMPR2	BMPR2	100	1000
DDR1-IN-1	BMX	BMX	88	1000
DDR1-IN-1	BRAF	BRAF	64	1000

DDR1-IN-1	BRAF(V600E)	BRAF	28	1000
DDR1-IN-1	BRK	PTK6	100	1000
DDR1-IN-1	BRSK1	BRSK1	94	1000
DDR1-IN-1	BRSK2	BRSK2	100	1000
DDR1-IN-1	BTK	BTK	100	1000
DDR1-IN-1	BUB1	BUB1	100	1000
DDR1-IN-1	CAMK1	CAMK1	100	1000
DDR1-IN-1	CAMK1D	CAMK1D	52	1000
DDR1-IN-1	CAMK1G	CAMK1G	94	1000
DDR1-IN-1	CAMK2A	CAMK2A	100	1000
DDR1-IN-1	CAMK2B	CAMK2B	100	1000
DDR1-IN-1	CAMK2D	CAMK2D	100	1000
DDR1-IN-1	CAMK2G	CAMK2G	97	1000
DDR1-IN-1	CAMK4	CAMK4	100	1000
DDR1-IN-1	CAMKK1	CAMKK1	100	1000
DDR1-IN-1	CAMKK2	CAMKK2	96	1000
DDR1-IN-1	CASK	CASK	100	1000
DDR1-IN-1	CDC2L1	CDK11B	100	1000
DDR1-IN-1	CDC2L2	CDC2L2	100	1000
DDR1-IN-1	CDC2L5	CDK13	100	1000
DDR1-IN-1	CDK11	CDK19	93	1000
DDR1-IN-1	CDK2	CDK2	82	1000
DDR1-IN-1	CDK3	CDK3	100	1000
DDR1-IN-1	CDK4-cyclinD1	CDK4	79	1000
DDR1-IN-1	CDK4-cyclinD3	CDK4	100	1000
DDR1-IN-1	CDK5	CDK5	100	1000
DDR1-IN-1	CDK7	CDK7	84	1000
DDR1-IN-1	CDK8	CDK8	67	1000
DDR1-IN-1	CDK9	CDK9	100	1000
DDR1-IN-1	CDKL1	CDKL1	100	1000
DDR1-IN-1	CDKL2	CDKL2	75	1000
DDR1-IN-1	CDKL3	CDKL3	86	1000
DDR1-IN-1	CDKL5	CDKL5	100	1000
DDR1-IN-1	CHEK1	CHEK1	100	1000
DDR1-IN-1	CHEK2	CHEK2	100	1000
DDR1-IN-1	CIT	CIT	65	1000
DDR1-IN-1	CLK1	CLK1	100	1000
DDR1-IN-1	CLK2	CLK2	100	1000
DDR1-IN-1	CLK3	CLK3	100	1000
DDR1-IN-1	CLK4	CLK4	94	1000
DDR1-IN-1	CSF1R	CSF1R	2	1000
DDR1-IN-1	CSF1R-autoinhibited	CSF1R	100	1000
DDR1-IN-1	CSK	CSK	100	1000
DDR1-IN-1	CSNK1A1	CSNK1A1	100	1000
DDR1-IN-1	CSNK1A1L	CSNK1A1L	100	1000
DDR1-IN-1	CSNK1D	CSNK1D	88	1000
DDR1-IN-1	CSNK1E	CSNK1E	100	1000

DDR1-IN-1	CSNK1G1	CSNK1G1	100	1000
DDR1-IN-1	CSNK1G2	CSNK1G2	100	1000
DDR1-IN-1	CSNK1G3	CSNK1G3	100	1000
DDR1-IN-1	CSNK2A1	CSNK2A1	100	1000
DDR1-IN-1	CSNK2A2	CSNK2A2	95	1000
DDR1-IN-1	CTK	MATK	100	1000
DDR1-IN-1	DAPK1	DAPK1	100	1000
DDR1-IN-1	DAPK2	DAPK2	100	1000
DDR1-IN-1	DAPK3	DAPK3	100	1000
DDR1-IN-1	DCAMKL1	DCLK1	88	1000
DDR1-IN-1	DCAMKL2	DCLK2	92	1000
DDR1-IN-1	DCAMKL3	DCLK3	100	1000
DDR1-IN-1	DDR1	DDR1	0.1	1000
DDR1-IN-1	DDR2	DDR2	14	1000
DDR1-IN-1	DLK	MAP3K12	100	1000
DDR1-IN-1	DMPK	DMPK	88	1000
DDR1-IN-1	DMPK2	CDC42BPG	100	1000
DDR1-IN-1	DRAK1	STK17A	100	1000
DDR1-IN-1	DRAK2	STK17B	100	1000
DDR1-IN-1	DYRK1A	DYRK1A	97	1000
DDR1-IN-1	DYRK1B	DYRK1B	95	1000
DDR1-IN-1	DYRK2	DYRK2	95	1000
DDR1-IN-1	EGFR	EGFR	100	1000
DDR1-IN-1	EGFR(E746-A750del)	EGFR	99	1000
DDR1-IN-1	EGFR(G719C)	EGFR	100	1000
DDR1-IN-1	EGFR(G719S)	EGFR	80	1000
DDR1-IN-1	EGFR(L747-E749del, A750P)	EGFR	100	1000
DDR1-IN-1	EGFR(L747-S752del, P753S)	EGFR	100	1000
DDR1-IN-1	EGFR(L747-T751del,Sins)	EGFR	71	1000
DDR1-IN-1	EGFR(L858R)	EGFR	100	1000
DDR1-IN-1	EGFR(L858R,T790M)	EGFR	90	1000
DDR1-IN-1	EGFR(L861Q)	EGFR	77	1000
DDR1-IN-1	EGFR(S752-I759del)	EGFR	100	1000
DDR1-IN-1	EGFR(T790M)	EGFR	83	1000
DDR1-IN-1	EIF2AK1	EIF2AK1	100	1000
DDR1-IN-1	EPHA1	EPHA1	77	1000
DDR1-IN-1	EPHA2	EPHA2	73	1000
DDR1-IN-1	EPHA3	EPHA3	76	1000
DDR1-IN-1	EPHA4	EPHA4	100	1000
DDR1-IN-1	EPHA5	EPHA5	100	1000
DDR1-IN-1	EPHA6	EPHA6	100	1000
DDR1-IN-1	EPHA7	EPHA7	89	1000
DDR1-IN-1	EPHA8	EPHA8	82	1000
DDR1-IN-1	EPHB1	EPHB1	100	1000
DDR1-IN-1	EPHB2	EPHB2	100	1000
DDR1-IN-1	EPHB3	EPHB3	100	1000
DDR1-IN-1	EPHB4	EPHB4	90	1000

DDR1-IN-1	EPHB6	EPHB6	91	1000
DDR1-IN-1	ERBB2	ERBB2	80	1000
DDR1-IN-1	ERBB3	ERBB3	100	1000
DDR1-IN-1	ERBB4	ERBB4	100	1000
DDR1-IN-1	ERK1	MAPK3	100	1000
DDR1-IN-1	ERK2	MAPK1	100	1000
DDR1-IN-1	ERK3	MAPK6	100	1000
DDR1-IN-1	ERK4	MAPK4	100	1000
DDR1-IN-1	ERK5	MAPK7	100	1000
DDR1-IN-1	ERK8	MAPK15	100	1000
DDR1-IN-1	ERN1	ERN1	100	1000
DDR1-IN-1	FAK	PTK2	77	1000
DDR1-IN-1	FER	FER	100	1000
DDR1-IN-1	FES	FES	97	1000
DDR1-IN-1	FGFR1	FGFR1	78	1000
DDR1-IN-1	FGFR2	FGFR2	83	1000
DDR1-IN-1	FGFR3	FGFR3	100	1000
DDR1-IN-1	FGFR3(G697C)	FGFR3	88	1000
DDR1-IN-1	FGFR4	FGFR4	100	1000
DDR1-IN-1	FGR	FGR	68	1000
DDR1-IN-1	FLT1	FLT1	63	1000
DDR1-IN-1	FLT3	FLT3	41	1000
DDR1-IN-1	FLT3(D835H)	FLT3	100	1000
DDR1-IN-1	FLT3(D835Y)	FLT3	100	1000
DDR1-IN-1	FLT3(ITD)	FLT3	81	1000
DDR1-IN-1	FLT3(K663Q)	FLT3	45	1000
DDR1-IN-1	FLT3(N841I)	FLT3	81	1000
DDR1-IN-1	FLT3(R834Q)	FLT3	100	1000
DDR1-IN-1	FLT3-autoinhibited	FLT3	100	1000
DDR1-IN-1	FLT4	FLT4	100	1000
DDR1-IN-1	FRK	FRK	13	1000
DDR1-IN-1	FYN	FYN	90	1000
DDR1-IN-1	GAK	GAK	100	1000
DDR1-IN-1	GCN2(Kin.Dom.2,S808G)	EIF2AK4	100	1000
DDR1-IN-1	GRK1	GRK1	100	1000
DDR1-IN-1	GRK4	GRK4	100	1000
DDR1-IN-1	GRK7	GRK7	100	1000
DDR1-IN-1	GSK3A	GSK3A	100	1000
DDR1-IN-1	GSK3B	GSK3B	100	1000
DDR1-IN-1	HASPIN	GSG2	100	1000
DDR1-IN-1	HCK	HCK	80	1000
DDR1-IN-1	HIPK1	HIPK1	83	1000
DDR1-IN-1	HIPK2	HIPK2	100	1000
DDR1-IN-1	HIPK3	HIPK3	100	1000
DDR1-IN-1	HIPK4	HIPK4	100	1000
DDR1-IN-1	HPK1	MAP4K1	91	1000
DDR1-IN-1	HUNK	HUNK	100	1000

DDR1-IN-1	ICK	ICK	100	1000
DDR1-IN-1	IGF1R	IGF1R	100	1000
DDR1-IN-1	IKK-alpha	CHUK	74	1000
DDR1-IN-1	IKK-beta	IKBKB	100	1000
DDR1-IN-1	IKK-epsilon	IKBKE	100	1000
DDR1-IN-1	INSR	INSR	77	1000
DDR1-IN-1	INSRR	INSRR	93	1000
DDR1-IN-1	IRAK1	IRAK1	100	1000
DDR1-IN-1	IRAK3	IRAK3	100	1000
DDR1-IN-1	IRAK4	IRAK4	84	1000
DDR1-IN-1	ITK	ITK	72	1000
DDR1-IN-1	JAK1(JH1domain-catalytic)	JAK1	76	1000
DDR1-IN-1	JAK1(JH2domain-pseudokinase)	JAK1	100	1000
DDR1-IN-1	JAK2(JH1domain-catalytic)	JAK2	91	1000
DDR1-IN-1	JAK3(JH1domain-catalytic)	JAK3	97	1000
DDR1-IN-1	JNK1	MAPK8	82	1000
DDR1-IN-1	JNK2	MAPK9	29	1000
DDR1-IN-1	JNK3	MAPK10	81	1000
DDR1-IN-1	KIT	KIT	0.85	1000
DDR1-IN-1	KIT(A829P)	KIT	100	1000
DDR1-IN-1	KIT(D816H)	KIT	100	1000
DDR1-IN-1	KIT(D816V)	KIT	81	1000
DDR1-IN-1	KIT(L576P)	KIT	2.9	1000
DDR1-IN-1	KIT(V559D)	KIT	0.4	1000
DDR1-IN-1	KIT(V559D,T670I)	KIT	58	1000
DDR1-IN-1	KIT(V559D,V654A)	KIT	24	1000
DDR1-IN-1	KIT-autoinhibited	KIT	100	1000
DDR1-IN-1	LATS1	LATS1	95	1000
DDR1-IN-1	LATS2	LATS2	100	1000
DDR1-IN-1	LCK	LCK	22	1000
DDR1-IN-1	LIMK1	LIMK1	100	1000
DDR1-IN-1	LIMK2	LIMK2	100	1000
DDR1-IN-1	LKB1	STK11	100	1000
DDR1-IN-1	LOK	STK10	3.2	1000
DDR1-IN-1	LRRK2	LRRK2	100	1000
DDR1-IN-1	LRRK2(G2019S)	LRRK2	100	1000
DDR1-IN-1	LTK	LTK	100	1000
DDR1-IN-1	LYN	LYN	52	1000
DDR1-IN-1	LZK	MAP3K13	100	1000
DDR1-IN-1	MAK	MAK	100	1000
DDR1-IN-1	MAP3K1	MAP3K1	100	1000
DDR1-IN-1	MAP3K15	MAP3K15	100	1000
DDR1-IN-1	MAP3K2	MAP3K2	100	1000
DDR1-IN-1	MAP3K3	MAP3K3	100	1000
DDR1-IN-1	MAP3K4	MAP3K4	100	1000
DDR1-IN-1	MAP4K2	MAP4K2	100	1000
DDR1-IN-1	MAP4K3	MAP4K3	76	1000

DDR1-IN-1	MAP4K4	MAP4K4	88	1000
DDR1-IN-1	MAP4K5	MAP4K5	100	1000
DDR1-IN-1	MAPKAPK2	MAPKAPK2	100	1000
DDR1-IN-1	MAPKAPK5	MAPKAPK5	100	1000
DDR1-IN-1	MARK1	MARK1	100	1000
DDR1-IN-1	MARK2	MARK2	100	1000
DDR1-IN-1	MARK3	MARK3	100	1000
DDR1-IN-1	MARK4	MARK4	88	1000
DDR1-IN-1	MAST1	MAST1	100	1000
DDR1-IN-1	MEK1	MAP2K1	100	1000
DDR1-IN-1	MEK2	MAP2K2	100	1000
DDR1-IN-1	MEK3	MAP2K3	100	1000
DDR1-IN-1	MEK4	MAP2K4	100	1000
DDR1-IN-1	MEK5	MAP2K5	100	1000
DDR1-IN-1	MEK6	MAP2K6	100	1000
DDR1-IN-1	MELK	MELK	100	1000
DDR1-IN-1	MERTK	MERTK	100	1000
DDR1-IN-1	MET	MET	100	1000
DDR1-IN-1	MET(M1250T)	MET	100	1000
DDR1-IN-1	MET(Y1235D)	MET	100	1000
DDR1-IN-1	MINK	MINK1	100	1000
DDR1-IN-1	MKK7	MAP2K7	97	1000
DDR1-IN-1	MKNK1	MKNK1	100	1000
DDR1-IN-1	MKNK2	MKNK2	95	1000
DDR1-IN-1	MLCK	MYLK3	100	1000
DDR1-IN-1	MLK1	MAP3K9	100	1000
DDR1-IN-1	MLK2	MAP3K10	100	1000
DDR1-IN-1	MLK3	MAP3K11	100	1000
DDR1-IN-1	MRCKA	CDC42BPA	100	1000
DDR1-IN-1	MRCKB	CDC42BPB	77	1000
DDR1-IN-1	MST1	STK4	100	1000
DDR1-IN-1	MST1R	MST1R	88	1000
DDR1-IN-1	MST2	STK3	14	1000
DDR1-IN-1	MST3	STK24	94	1000
DDR1-IN-1	MST4	MST4	100	1000
DDR1-IN-1	MTOR	MTOR	100	1000
DDR1-IN-1	MUSK	MUSK	100	1000
DDR1-IN-1	MYLK	MYLK	100	1000
DDR1-IN-1	MYLK2	MYLK2	100	1000
DDR1-IN-1	MYLK4	MYLK4	84	1000
DDR1-IN-1	MYO3A	MYO3A	100	1000
DDR1-IN-1	MYO3B	MYO3B	100	1000
DDR1-IN-1	NDR1	STK38	100	1000
DDR1-IN-1	NDR2	STK38L	100	1000
DDR1-IN-1	NEK1	NEK1	100	1000
DDR1-IN-1	NEK11	NEK11	100	1000
DDR1-IN-1	NEK2	NEK2	100	1000

DDR1-IN-1	NEK3	NEK3	100	1000
DDR1-IN-1	NEK4	NEK4	100	1000
DDR1-IN-1	NEK5	NEK5	100	1000
DDR1-IN-1	NEK6	NEK6	100	1000
DDR1-IN-1	NEK7	NEK7	100	1000
DDR1-IN-1	NEK9	NEK9	100	1000
DDR1-IN-1	NIM1	MGC42105	100	1000
DDR1-IN-1	NLK	NLK	79	1000
DDR1-IN-1	OSR1	OXR1	97	1000
DDR1-IN-1	p38-alpha	MAPK14	18	1000
DDR1-IN-1	p38-beta	MAPK11	7.1	1000
DDR1-IN-1	p38-delta	MAPK13	100	1000
DDR1-IN-1	p38-gamma	MAPK12	100	1000
DDR1-IN-1	PAK1	PAK1	100	1000
DDR1-IN-1	PAK2	PAK2	100	1000
DDR1-IN-1	PAK3	PAK3	98	1000
DDR1-IN-1	PAK4	PAK4	100	1000
DDR1-IN-1	PAK6	PAK6	100	1000
DDR1-IN-1	PAK7	PAK7	86	1000
DDR1-IN-1	PCK1	CDK16	100	1000
DDR1-IN-1	PCK2	CDK17	100	1000
DDR1-IN-1	PCK3	CDK18	100	1000
DDR1-IN-1	PDGFRA	PDGFRA	100	1000
DDR1-IN-1	PDGFRB	PDGFRB	0.85	1000
DDR1-IN-1	PDPK1	PDPK1	100	1000
DDR1-IN-1	PFCDPK1(P.falciparum)	CDPK1	68	1000
DDR1-IN-1	PFPK5(P.falciparum)	MAL13P1.279	100	1000
DDR1-IN-1	PFTAIRE2	CDK15	100	1000
DDR1-IN-1	PFTK1	CDK14	100	1000
DDR1-IN-1	PHKG1	PHKG1	100	1000
DDR1-IN-1	PHKG2	PHKG2	100	1000
DDR1-IN-1	PIK3C2B	PIK3C2B	66	1000
DDR1-IN-1	PIK3C2G	PIK3C2G	100	1000
DDR1-IN-1	PIK3CA	PIK3CA	86	1000
DDR1-IN-1	PIK3CA(C420R)	PIK3CA	100	1000
DDR1-IN-1	PIK3CA(E542K)	PIK3CA	100	1000
DDR1-IN-1	PIK3CA(E545A)	PIK3CA	71	1000
DDR1-IN-1	PIK3CA(E545K)	PIK3CA	93	1000
DDR1-IN-1	PIK3CA(H1047L)	PIK3CA	100	1000
DDR1-IN-1	PIK3CA(H1047Y)	PIK3CA	100	1000
DDR1-IN-1	PIK3CA(I800L)	PIK3CA	95	1000
DDR1-IN-1	PIK3CA(M1043I)	PIK3CA	100	1000
DDR1-IN-1	PIK3CA(Q546K)	PIK3CA	100	1000
DDR1-IN-1	PIK3CB	PIK3CB	100	1000
DDR1-IN-1	PIK3CD	PIK3CD	100	1000
DDR1-IN-1	PIK3CG	PIK3CG	93	1000
DDR1-IN-1	PIK4CB	PI4KB	100	1000

DDR1-IN-1	PIM1	PIM1	100	1000
DDR1-IN-1	PIM2	PIM2	97	1000
DDR1-IN-1	PIM3	PIM3	100	1000
DDR1-IN-1	PIP5K1A	PIP5K1A	100	1000
DDR1-IN-1	PIP5K1C	PIP5K1C	92	1000
DDR1-IN-1	PIP5K2B	PIP4K2B	100	1000
DDR1-IN-1	PIP5K2C	PIP4K2C	100	1000
DDR1-IN-1	PKAC-alpha	PRKACA	100	1000
DDR1-IN-1	PKAC-beta	PRKACB	80	1000
DDR1-IN-1	PKMYT1	PKMYT1	70	1000
DDR1-IN-1	PKN1	PKN1	100	1000
DDR1-IN-1	PKN2	PKN2	100	1000
DDR1-IN-1	PKNB(M.tuberculosis)	pknB	100	1000
DDR1-IN-1	PLK1	PLK1	100	1000
DDR1-IN-1	PLK2	PLK2	66	1000
DDR1-IN-1	PLK3	PLK3	100	1000
DDR1-IN-1	PLK4	PLK4	100	1000
DDR1-IN-1	PRKCD	PRKCD	96	1000
DDR1-IN-1	PRKCE	PRKCE	100	1000
DDR1-IN-1	PRKCH	PRKCH	100	1000
DDR1-IN-1	PRKCI	PRKCI	100	1000
DDR1-IN-1	PRKCQ	PRKCQ	100	1000
DDR1-IN-1	PRKD1	PRKD1	96	1000
DDR1-IN-1	PRKD2	PRKD2	95	1000
DDR1-IN-1	PRKD3	PRKD3	100	1000
DDR1-IN-1	PRKG1	PRKG1	100	1000
DDR1-IN-1	PRKG2	PRKG2	100	1000
DDR1-IN-1	PRKR	EIF2AK2	96	1000
DDR1-IN-1	PRKX	PRKX	100	1000
DDR1-IN-1	PRP4	PRPF4B	100	1000
DDR1-IN-1	PYK2	PTK2B	49	1000
DDR1-IN-1	QSK	KIAA0999	100	1000
DDR1-IN-1	RAF1	RAF1	95	1000
DDR1-IN-1	RET	RET	14	1000
DDR1-IN-1	RET(M918T)	RET	40	1000
DDR1-IN-1	RET(V804L)	RET	99	1000
DDR1-IN-1	RET(V804M)	RET	67	1000
DDR1-IN-1	RIOK1	RIOK1	90	1000
DDR1-IN-1	RIOK2	RIOK2	100	1000
DDR1-IN-1	RIOK3	RIOK3	100	1000
DDR1-IN-1	RIPK1	RIPK1	86	1000
DDR1-IN-1	RIPK2	RIPK2	100	1000
DDR1-IN-1	RIPK4	RIPK4	100	1000
DDR1-IN-1	RIPK5	DSTYK	100	1000
DDR1-IN-1	ROCK1	ROCK1	69	1000
DDR1-IN-1	ROCK2	ROCK2	74	1000
DDR1-IN-1	ROS1	ROS1	100	1000

DDR1-IN-1	RPS6KA4(Kin.Dom.1-N-terminal)	RPS6KA4	100	1000
DDR1-IN-1	RPS6KA4(Kin.Dom.2-C-terminal)	RPS6KA4	100	1000
DDR1-IN-1	RPS6KA5(Kin.Dom.1-N-terminal)	RPS6KA5	100	1000
DDR1-IN-1	RPS6KA5(Kin.Dom.2-C-terminal)	RPS6KA5	100	1000
DDR1-IN-1	RSK1(Kin.Dom.1-N-terminal)	RPS6KA1	91	1000
DDR1-IN-1	RSK1(Kin.Dom.2-C-terminal)	RPS6KA1	95	1000
DDR1-IN-1	RSK2(Kin.Dom.1-N-terminal)	RPS6KA3	100	1000
DDR1-IN-1	RSK2(Kin.Dom.2-C-terminal)	RPS6KA3	100	1000
DDR1-IN-1	RSK3(Kin.Dom.1-N-terminal)	RPS6KA2	100	1000
DDR1-IN-1	RSK3(Kin.Dom.2-C-terminal)	RPS6KA2	91	1000
DDR1-IN-1	RSK4(Kin.Dom.1-N-terminal)	RPS6KA6	100	1000
DDR1-IN-1	RSK4(Kin.Dom.2-C-terminal)	RPS6KA6	89	1000
DDR1-IN-1	S6K1	RPS6KB1	100	1000
DDR1-IN-1	SBK1	SBK1	76	1000
DDR1-IN-1	SGK	SGK1	79	1000
DDR1-IN-1	SgK110	SgK110	100	1000
DDR1-IN-1	SGK3	SGK3	100	1000
DDR1-IN-1	SIK	SIK1	100	1000
DDR1-IN-1	SIK2	SIK2	80	1000
DDR1-IN-1	SLK	SLK	76	1000
DDR1-IN-1	SNARK	NUAK2	100	1000
DDR1-IN-1	SNRK	SNRK	98	1000
DDR1-IN-1	SRC	SRC	78	1000
DDR1-IN-1	SRMS	SRMS	100	1000
DDR1-IN-1	SRPK1	SRPK1	98	1000
DDR1-IN-1	SRPK2	SRPK2	100	1000
DDR1-IN-1	SRPK3	SRPK3	99	1000
DDR1-IN-1	STK16	STK16	100	1000
DDR1-IN-1	STK33	STK33	100	1000
DDR1-IN-1	STK35	STK35	72	1000
DDR1-IN-1	STK36	STK36	81	1000
DDR1-IN-1	STK39	STK39	68	1000
DDR1-IN-1	SYK	SYK	100	1000
DDR1-IN-1	TAK1	MAP3K7	7.6	1000
DDR1-IN-1	TAOK1	TAOK1	100	1000
DDR1-IN-1	TAOK2	TAOK2	100	1000
DDR1-IN-1	TAOK3	TAOK3	100	1000
DDR1-IN-1	TBK1	TBK1	50	1000
DDR1-IN-1	TEC	TEC	98	1000
DDR1-IN-1	TESK1	TESK1	100	1000
DDR1-IN-1	TGFBR1	TGFBR1	100	1000
DDR1-IN-1	TGFBR2	TGFBR2	100	1000
DDR1-IN-1	TIE1	TIE1	79	1000
DDR1-IN-1	TIE2	TEK	100	1000
DDR1-IN-1	TLK1	TLK1	88	1000
DDR1-IN-1	TLK2	TLK2	94	1000
DDR1-IN-1	TNIK	TNIK	79	1000

DDR1-IN-1	TNK1	TNK1	100	1000
DDR1-IN-1	TNK2	TNK2	100	1000
DDR1-IN-1	TNNI3K	TNNI3K	88	1000
DDR1-IN-1	TRKA	NTRK1	100	1000
DDR1-IN-1	TRKB	NTRK2	81	1000
DDR1-IN-1	TRKC	NTRK3	68	1000
DDR1-IN-1	TRPM6	TRPM6	100	1000
DDR1-IN-1	TSSK1B	TSSK1B	93	1000
DDR1-IN-1	TTK	TTK	100	1000
DDR1-IN-1	TXK	TXK	100	1000
DDR1-IN-1	TYK2(JH1domain-catalytic)	TYK2	100	1000
DDR1-IN-1	TYK2(JH2domain-pseudokinase)	TYK2	100	1000
DDR1-IN-1	TYRO3	TYRO3	100	1000
DDR1-IN-1	ULK1	ULK1	100	1000
DDR1-IN-1	ULK2	ULK2	100	1000
DDR1-IN-1	ULK3	ULK3	100	1000
DDR1-IN-1	VEGFR2	KDR	100	1000
DDR1-IN-1	VRK2	VRK2	100	1000
DDR1-IN-1	WEE1	WEE1	100	1000
DDR1-IN-1	WEE2	WEE2	100	1000
DDR1-IN-1	WNK1	WNK1	100	1000
DDR1-IN-1	WNK3	WNK3	100	1000
DDR1-IN-1	YANK1	STK32A	100	1000
DDR1-IN-1	YANK2	STK32B	92	1000
DDR1-IN-1	YANK3	STK32C	100	1000
DDR1-IN-1	YES	YES1	98	1000
DDR1-IN-1	YSK1	STK25	100	1000
DDR1-IN-1	YSK4	MAP3K19	100	1000
DDR1-IN-1	ZAK	ZAK	100	1000
DDR1-IN-1	ZAP70	ZAP70	100	1000