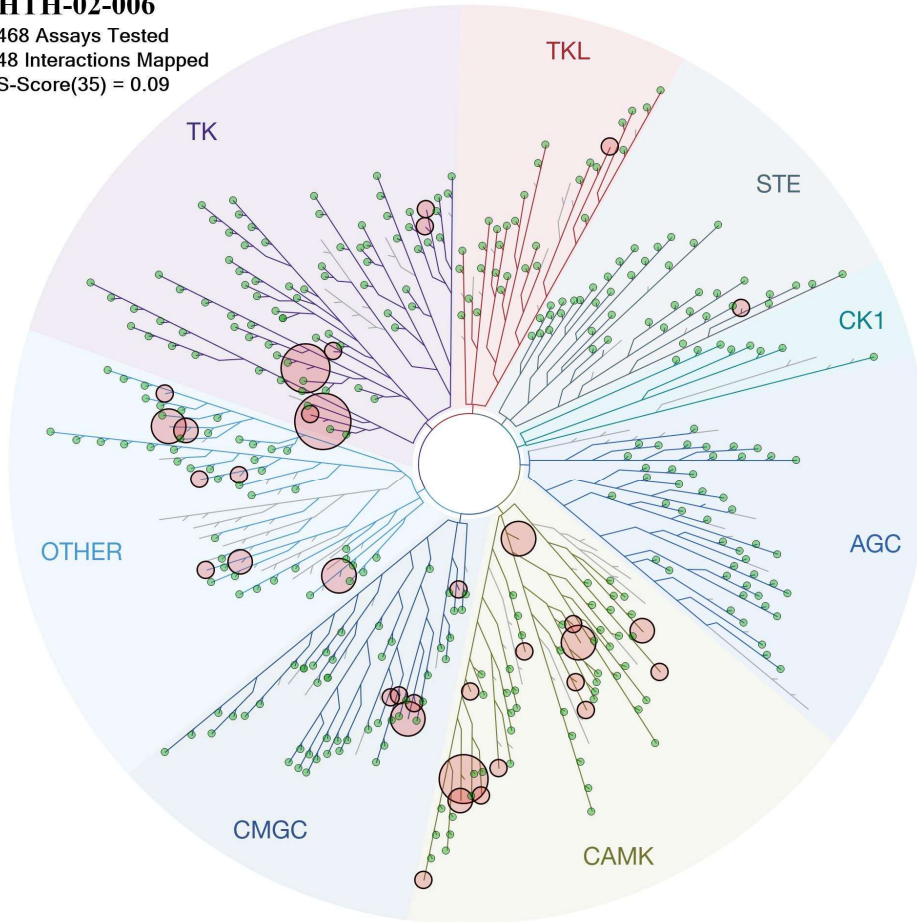


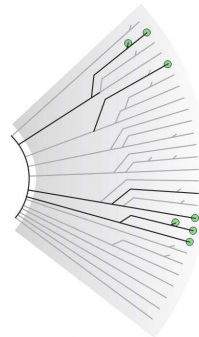
HTH-02-006

468 Assays Tested
48 Interactions Mapped
S-Score(35) = 0.09

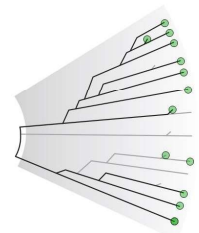


ATYPICAL

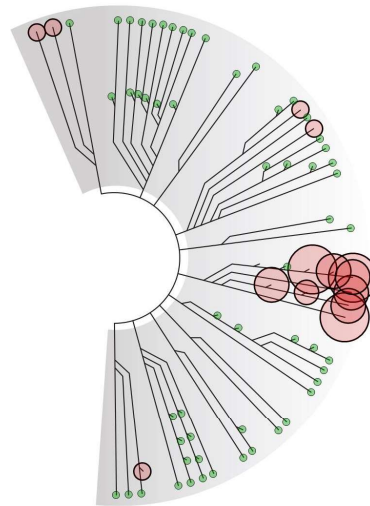
MUTANT



LIPID



PATHOGEN



Compound Name	DiscoverX Gene Symbol	Entrez Gene Symbol	Percent Control	Compound Concentration (nM)
HTH-02-006	AAK1	AAK1	70	1000
HTH-02-006	ABL1(E255K)-phosphorylated	ABL1	73	1000
HTH-02-006	ABL1(F317I)-nonphosphorylated	ABL1	96	1000
HTH-02-006	ABL1(F317I)-phosphorylated	ABL1	100	1000
HTH-02-006	ABL1(F317L)-nonphosphorylated	ABL1	92	1000
HTH-02-006	ABL1(F317L)-phosphorylated	ABL1	78	1000
HTH-02-006	ABL1(H396P)-nonphosphorylated	ABL1	90	1000
HTH-02-006	ABL1(H396P)-phosphorylated	ABL1	93	1000
HTH-02-006	ABL1(M351T)-phosphorylated	ABL1	95	1000
HTH-02-006	ABL1(Q252H)-nonphosphorylated	ABL1	74	1000
HTH-02-006	ABL1(Q252H)-phosphorylated	ABL1	99	1000
HTH-02-006	ABL1(T315I)-nonphosphorylated	ABL1	100	1000
HTH-02-006	ABL1(T315I)-phosphorylated	ABL1	85	1000
HTH-02-006	ABL1(Y253F)-phosphorylated	ABL1	95	1000
HTH-02-006	ABL1-nonphosphorylated	ABL1	80	1000
HTH-02-006	ABL1-phosphorylated	ABL1	78	1000
HTH-02-006	ABL2	ABL2	86	1000
HTH-02-006	ACVR1	ACVR1	100	1000
HTH-02-006	ACVR1B	ACVR1B	84	1000
HTH-02-006	ACVR2A	ACVR2A	100	1000
HTH-02-006	ACVR2B	ACVR2B	100	1000
HTH-02-006	ACVRL1	ACVRL1	100	1000
HTH-02-006	ADCK3	CABC1	100	1000
HTH-02-006	ADCK4	ADCK4	96	1000
HTH-02-006	AKT1	AKT1	100	1000
HTH-02-006	AKT2	AKT2	97	1000
HTH-02-006	AKT3	AKT3	100	1000
HTH-02-006	ALK	ALK	77	1000
HTH-02-006	ALK(C1156Y)	ALK	20	1000
HTH-02-006	ALK(L1196M)	ALK	18	1000
HTH-02-006	AMPK-alpha1	PRKAA1	44	1000
HTH-02-006	AMPK-alpha2	PRKAA2	27	1000
HTH-02-006	ANKK1	ANKK1	100	1000
HTH-02-006	ARK5	NUAK1	0.7	1000
HTH-02-006	ASK1	MAP3K5	100	1000
HTH-02-006	ASK2	MAP3K6	100	1000
HTH-02-006	AURKA	AURKA	100	1000
HTH-02-006	AURKB	AURKB	87	1000
HTH-02-006	AURKC	AURKC	100	1000
HTH-02-006	AXL	AXL	53	1000
HTH-02-006	BIKE	BMP2K	25	1000
HTH-02-006	BLK	BLK	100	1000
HTH-02-006	BMPR1A	BMPR1A	71	1000
HTH-02-006	BMPR1B	BMPR1B	100	1000
HTH-02-006	BMPR2	BMPR2	99	1000

HTH-02-006	BMX	BMX	100	1000
HTH-02-006	BRAF	BRAF	100	1000
HTH-02-006	BRAF(V600E)	BRAF	100	1000
HTH-02-006	BRK	PTK6	100	1000
HTH-02-006	BRSK1	BRSK1	100	1000
HTH-02-006	BRSK2	BRSK2	100	1000
HTH-02-006	BTK	BTK	100	1000
HTH-02-006	BUB1	BUB1	100	1000
HTH-02-006	CAMK1	CAMK1	70	1000
HTH-02-006	CAMK1B	PNCK	100	1000
HTH-02-006	CAMK1D	CAMK1D	56	1000
HTH-02-006	CAMK1G	CAMK1G	100	1000
HTH-02-006	CAMK2A	CAMK2A	67	1000
HTH-02-006	CAMK2B	CAMK2B	58	1000
HTH-02-006	CAMK2D	CAMK2D	100	1000
HTH-02-006	CAMK2G	CAMK2G	92	1000
HTH-02-006	CAMK4	CAMK4	100	1000
HTH-02-006	CAMKK1	CAMKK1	74	1000
HTH-02-006	CAMKK2	CAMKK2	56	1000
HTH-02-006	CASK	CASK	77	1000
HTH-02-006	CDC2L1	CDK11B	87	1000
HTH-02-006	CDC2L2	CDC2L2	83	1000
HTH-02-006	CDC2L5	CDK13	100	1000
HTH-02-006	CDK11	CDK19	36	1000
HTH-02-006	CDK2	CDK2	84	1000
HTH-02-006	CDK3	CDK3	100	1000
HTH-02-006	CDK4	CDK4	97	1000
HTH-02-006	CDK4-cyclinD1	CDK4	100	1000
HTH-02-006	CDK4-cyclinD3	CDK4	94	1000
HTH-02-006	CDK5	CDK5	83	1000
HTH-02-006	CDK7	CDK7	89	1000
HTH-02-006	CDK8	CDK8	73	1000
HTH-02-006	CDK9	CDK9	80	1000
HTH-02-006	CDKL1	CDKL1	54	1000
HTH-02-006	CDKL2	CDKL2	91	1000
HTH-02-006	CDKL3	CDKL3	37	1000
HTH-02-006	CDKL5	CDKL5	100	1000
HTH-02-006	CHEK1	CHEK1	37	1000
HTH-02-006	CHEK2	CHEK2	40	1000
HTH-02-006	CIT	CIT	86	1000
HTH-02-006	CLK1	CLK1	23	1000
HTH-02-006	CLK2	CLK2	54	1000
HTH-02-006	CLK3	CLK3	100	1000
HTH-02-006	CLK4	CLK4	3.4	1000
HTH-02-006	CSF1R	CSF1R	76	1000
HTH-02-006	CSF1R-autoinhibited	CSF1R	75	1000
HTH-02-006	CSK	CSK	81	1000

HTH-02-006	CSNK1A1	CSNK1A1	100	1000
HTH-02-006	CSNK1A1L	CSNK1A1L	69	1000
HTH-02-006	CSNK1D	CSNK1D	81	1000
HTH-02-006	CSNK1E	CSNK1E	100	1000
HTH-02-006	CSNK1G1	CSNK1G1	84	1000
HTH-02-006	CSNK1G2	CSNK1G2	86	1000
HTH-02-006	CSNK1G3	CSNK1G3	100	1000
HTH-02-006	CSNK2A1	CSNK2A1	44	1000
HTH-02-006	CSNK2A2	CSNK2A2	22	1000
HTH-02-006	CTK	MATK	89	1000
HTH-02-006	DAPK1	DAPK1	77	1000
HTH-02-006	DAPK2	DAPK2	51	1000
HTH-02-006	DAPK3	DAPK3	6.9	1000
HTH-02-006	DCAMKL1	DCLK1	24	1000
HTH-02-006	DCAMKL2	DCLK2	27	1000
HTH-02-006	DCAMKL3	DCLK3	100	1000
HTH-02-006	DDR1	DDR1	53	1000
HTH-02-006	DDR2	DDR2	100	1000
HTH-02-006	DLK	MAP3K12	72	1000
HTH-02-006	DMPK	DMPK	100	1000
HTH-02-006	DMPK2	CDC42BPG	100	1000
HTH-02-006	DRAK1	STK17A	41	1000
HTH-02-006	DRAK2	STK17B	100	1000
HTH-02-006	DYRK1A	DYRK1A	86	1000
HTH-02-006	DYRK1B	DYRK1B	31	1000
HTH-02-006	DYRK2	DYRK2	47	1000
HTH-02-006	EGFR	EGFR	100	1000
HTH-02-006	EGFR(E746-A750del)	EGFR	50	1000
HTH-02-006	EGFR(G719C)	EGFR	100	1000
HTH-02-006	EGFR(G719S)	EGFR	99	1000
HTH-02-006	EGFR(L747-E749del, A750P)	EGFR	100	1000
HTH-02-006	EGFR(L747-S752del, P753S)	EGFR	76	1000
HTH-02-006	EGFR(L747-T751del,Sins)	EGFR	100	1000
HTH-02-006	EGFR(L858R)	EGFR	100	1000
HTH-02-006	EGFR(L858R,T790M)	EGFR	19	1000
HTH-02-006	EGFR(L861Q)	EGFR	80	1000
HTH-02-006	EGFR(S752-I759del)	EGFR	83	1000
HTH-02-006	EGFR(T790M)	EGFR	21	1000
HTH-02-006	EIF2AK1	EIF2AK1	78	1000
HTH-02-006	EPHA1	EPHA1	62	1000
HTH-02-006	EPHA2	EPHA2	89	1000
HTH-02-006	EPHA3	EPHA3	100	1000
HTH-02-006	EPHA4	EPHA4	81	1000
HTH-02-006	EPHA5	EPHA5	91	1000
HTH-02-006	EPHA6	EPHA6	88	1000
HTH-02-006	EPHA7	EPHA7	88	1000
HTH-02-006	EPHA8	EPHA8	82	1000

HTH-02-006	EPHB1	EPHB1	100	1000
HTH-02-006	EPHB2	EPHB2	100	1000
HTH-02-006	EPHB3	EPHB3	94	1000
HTH-02-006	EPHB4	EPHB4	79	1000
HTH-02-006	EPHB6	EPHB6	87	1000
HTH-02-006	ERBB2	ERBB2	100	1000
HTH-02-006	ERBB3	ERBB3	100	1000
HTH-02-006	ERBB4	ERBB4	73	1000
HTH-02-006	ERK1	MAPK3	100	1000
HTH-02-006	ERK2	MAPK1	93	1000
HTH-02-006	ERK3	MAPK6	100	1000
HTH-02-006	ERK4	MAPK4	68	1000
HTH-02-006	ERK5	MAPK7	75	1000
HTH-02-006	ERK8	MAPK15	100	1000
HTH-02-006	ERN1	ERN1	100	1000
HTH-02-006	FAK	PTK2	0.1	1000
HTH-02-006	FER	FER	29	1000
HTH-02-006	FES	FES	45	1000
HTH-02-006	FGFR1	FGFR1	98	1000
HTH-02-006	FGFR2	FGFR2	100	1000
HTH-02-006	FGFR3	FGFR3	100	1000
HTH-02-006	FGFR3(G697C)	FGFR3	61	1000
HTH-02-006	FGFR4	FGFR4	100	1000
HTH-02-006	FGR	FGR	78	1000
HTH-02-006	FLT1	FLT1	85	1000
HTH-02-006	FLT3	FLT3	0.95	1000
HTH-02-006	FLT3(D835H)	FLT3	2.1	1000
HTH-02-006	FLT3(D835V)	FLT3	0.15	1000
HTH-02-006	FLT3(D835Y)	FLT3	3.7	1000
HTH-02-006	FLT3(ITD)	FLT3	1.7	1000
HTH-02-006	FLT3(ITD,D835V)	FLT3	2.3	1000
HTH-02-006	FLT3(ITD,F691L)	FLT3	6.7	1000
HTH-02-006	FLT3(K663Q)	FLT3	3.2	1000
HTH-02-006	FLT3(N841I)	FLT3	0.75	1000
HTH-02-006	FLT3(R834Q)	FLT3	51	1000
HTH-02-006	FLT3-autoinhibited	FLT3	100	1000
HTH-02-006	FLT4	FLT4	83	1000
HTH-02-006	FRK	FRK	71	1000
HTH-02-006	FYN	FYN	100	1000
HTH-02-006	GAK	GAK	11	1000
HTH-02-006	GCN2(Kin.Dom.2,S808G)	EIF2AK4	3.6	1000
HTH-02-006	GRK1	GRK1	100	1000
HTH-02-006	GRK2	ADRBK1	100	1000
HTH-02-006	GRK3	ADRBK2	100	1000
HTH-02-006	GRK4	GRK4	86	1000
HTH-02-006	GRK7	GRK7	50	1000
HTH-02-006	GSK3A	GSK3A	19	1000

HTH-02-006	GSK3B	GSK3B	100	1000
HTH-02-006	HASPIN	GSG2	100	1000
HTH-02-006	HCK	HCK	100	1000
HTH-02-006	HIPK1	HIPK1	82	1000
HTH-02-006	HIPK2	HIPK2	100	1000
HTH-02-006	HIPK3	HIPK3	100	1000
HTH-02-006	HIPK4	HIPK4	32	1000
HTH-02-006	HPK1	MAP4K1	60	1000
HTH-02-006	HUNK	HUNK	68	1000
HTH-02-006	ICK	ICK	100	1000
HTH-02-006	IGF1R	IGF1R	25	1000
HTH-02-006	IKK-alpha	CHUK	93	1000
HTH-02-006	IKK-beta	IKBKB	88	1000
HTH-02-006	IKK-epsilon	IKBKE	88	1000
HTH-02-006	INSR	INSR	24	1000
HTH-02-006	INSRR	INSRR	58	1000
HTH-02-006	IRAK1	IRAK1	77	1000
HTH-02-006	IRAK3	IRAK3	76	1000
HTH-02-006	IRAK4	IRAK4	100	1000
HTH-02-006	ITK	ITK	79	1000
HTH-02-006	JAK1(JH1domain-catalytic)	JAK1	100	1000
HTH-02-006	JAK1(JH2domain-pseudokinase)	JAK1	60	1000
HTH-02-006	JAK2(JH1domain-catalytic)	JAK2	100	1000
HTH-02-006	JAK3(JH1domain-catalytic)	JAK3	62	1000
HTH-02-006	JNK1	MAPK8	45	1000
HTH-02-006	JNK2	MAPK9	37	1000
HTH-02-006	JNK3	MAPK10	43	1000
HTH-02-006	KIT	KIT	92	1000
HTH-02-006	KIT(A829P)	KIT	85	1000
HTH-02-006	KIT(D816H)	KIT	90	1000
HTH-02-006	KIT(D816V)	KIT	56	1000
HTH-02-006	KIT(L576P)	KIT	100	1000
HTH-02-006	KIT(V559D)	KIT	86	1000
HTH-02-006	KIT(V559D,T670I)	KIT	100	1000
HTH-02-006	KIT(V559D,V654A)	KIT	100	1000
HTH-02-006	KIT-autoinhibited	KIT	100	1000
HTH-02-006	LATS1	LATS1	100	1000
HTH-02-006	LATS2	LATS2	72	1000
HTH-02-006	LCK	LCK	100	1000
HTH-02-006	LIMK1	LIMK1	100	1000
HTH-02-006	LIMK2	LIMK2	100	1000
HTH-02-006	LKB1	STK11	86	1000
HTH-02-006	LOK	STK10	100	1000
HTH-02-006	LRRK2	LRRK2	100	1000
HTH-02-006	LRRK2(G2019S)	LRRK2	80	1000
HTH-02-006	LTK	LTK	64	1000
HTH-02-006	LYN	LYN	100	1000

HTH-02-006	LZK	MAP3K13	80	1000
HTH-02-006	MAK	MAK	76	1000
HTH-02-006	MAP3K1	MAP3K1	100	1000
HTH-02-006	MAP3K15	MAP3K15	100	1000
HTH-02-006	MAP3K2	MAP3K2	96	1000
HTH-02-006	MAP3K3	MAP3K3	85	1000
HTH-02-006	MAP3K4	MAP3K4	65	1000
HTH-02-006	MAP4K2	MAP4K2	100	1000
HTH-02-006	MAP4K3	MAP4K3	100	1000
HTH-02-006	MAP4K4	MAP4K4	99	1000
HTH-02-006	MAP4K5	MAP4K5	96	1000
HTH-02-006	MAPKAPK2	MAPKAPK2	100	1000
HTH-02-006	MAPKAPK5	MAPKAPK5	100	1000
HTH-02-006	MARK1	MARK1	59	1000
HTH-02-006	MARK2	MARK2	46	1000
HTH-02-006	MARK3	MARK3	32	1000
HTH-02-006	MARK4	MARK4	36	1000
HTH-02-006	MAST1	MAST1	78	1000
HTH-02-006	MEK1	MAP2K1	100	1000
HTH-02-006	MEK2	MAP2K2	90	1000
HTH-02-006	MEK3	MAP2K3	87	1000
HTH-02-006	MEK4	MAP2K4	100	1000
HTH-02-006	MEK5	MAP2K5	100	1000
HTH-02-006	MEK6	MAP2K6	85	1000
HTH-02-006	MELK	MELK	30	1000
HTH-02-006	MERTK	MERTK	92	1000
HTH-02-006	MET	MET	80	1000
HTH-02-006	MET(M1250T)	MET	86	1000
HTH-02-006	MET(Y1235D)	MET	100	1000
HTH-02-006	MINK	MINK1	100	1000
HTH-02-006	MKK7	MAP2K7	100	1000
HTH-02-006	MKNK1	MKNK1	100	1000
HTH-02-006	MKNK2	MKNK2	77	1000
HTH-02-006	MLCK	MYLK3	66	1000
HTH-02-006	MLK1	MAP3K9	67	1000
HTH-02-006	MLK2	MAP3K10	100	1000
HTH-02-006	MLK3	MAP3K11	100	1000
HTH-02-006	MRCKA	CDC42BPA	100	1000
HTH-02-006	MRCKB	CDC42BPB	100	1000
HTH-02-006	MST1	STK4	100	1000
HTH-02-006	MST1R	MST1R	88	1000
HTH-02-006	MST2	STK3	98	1000
HTH-02-006	MST3	STK24	84	1000
HTH-02-006	MST4	MST4	100	1000
HTH-02-006	MTOR	MTOR	100	1000
HTH-02-006	MUSK	MUSK	100	1000
HTH-02-006	MYLK	MYLK	79	1000

HTH-02-006	MYLK2	MYLK2	81	1000
HTH-02-006	MYLK4	MYLK4	22	1000
HTH-02-006	MYO3A	MYO3A	83	1000
HTH-02-006	MYO3B	MYO3B	100	1000
HTH-02-006	NDR1	STK38	75	1000
HTH-02-006	NDR2	STK38L	93	1000
HTH-02-006	NEK1	NEK1	100	1000
HTH-02-006	NEK10	NEK10	100	1000
HTH-02-006	NEK11	NEK11	78	1000
HTH-02-006	NEK2	NEK2	74	1000
HTH-02-006	NEK3	NEK3	60	1000
HTH-02-006	NEK4	NEK4	100	1000
HTH-02-006	NEK5	NEK5	100	1000
HTH-02-006	NEK6	NEK6	71	1000
HTH-02-006	NEK7	NEK7	79	1000
HTH-02-006	NEK9	NEK9	64	1000
HTH-02-006	NIK	MAP3K14	93	1000
HTH-02-006	NIM1	MGC42105	93	1000
HTH-02-006	NLK	NLK	100	1000
HTH-02-006	OSR1	OXS1	86	1000
HTH-02-006	p38-alpha	MAPK14	94	1000
HTH-02-006	p38-beta	MAPK11	91	1000
HTH-02-006	p38-delta	MAPK13	100	1000
HTH-02-006	p38-gamma	MAPK12	73	1000
HTH-02-006	PAK1	PAK1	95	1000
HTH-02-006	PAK2	PAK2	83	1000
HTH-02-006	PAK3	PAK3	83	1000
HTH-02-006	PAK4	PAK4	58	1000
HTH-02-006	PAK6	PAK6	85	1000
HTH-02-006	PAK7	PAK7	71	1000
HTH-02-006	PCTK1	CDK16	100	1000
HTH-02-006	PCTK2	CDK17	100	1000
HTH-02-006	PCTK3	CDK18	80	1000
HTH-02-006	PDGFRA	PDGFRA	100	1000
HTH-02-006	PDGFRB	PDGFRB	71	1000
HTH-02-006	PDPK1	PDPK1	100	1000
HTH-02-006	PFCDPK1(P.falciparum)	CDPK1	100	1000
HTH-02-006	PFPK5(P.falciparum)	MAL13P1.279	100	1000
HTH-02-006	PFTAIRE2	CDK15	78	1000
HTH-02-006	PFTK1	CDK14	79	1000
HTH-02-006	PHKG1	PHKG1	13	1000
HTH-02-006	PHKG2	PHKG2	2.7	1000
HTH-02-006	PIK3C2B	PIK3C2B	100	1000
HTH-02-006	PIK3C2G	PIK3C2G	51	1000
HTH-02-006	PIK3CA	PIK3CA	100	1000
HTH-02-006	PIK3CA(C420R)	PIK3CA	91	1000
HTH-02-006	PIK3CA(E542K)	PIK3CA	81	1000

HTH-02-006	PIK3CA(E545A)	PIK3CA	87	1000
HTH-02-006	PIK3CA(E545K)	PIK3CA	47	1000
HTH-02-006	PIK3CA(H1047L)	PIK3CA	100	1000
HTH-02-006	PIK3CA(H1047Y)	PIK3CA	83	1000
HTH-02-006	PIK3CA(I800L)	PIK3CA	64	1000
HTH-02-006	PIK3CA(M1043I)	PIK3CA	98	1000
HTH-02-006	PIK3CA(Q546K)	PIK3CA	100	1000
HTH-02-006	PIK3CB	PIK3CB	100	1000
HTH-02-006	PIK3CD	PIK3CD	74	1000
HTH-02-006	PIK3CG	PIK3CG	71	1000
HTH-02-006	PIK4CB	PI4KB	100	1000
HTH-02-006	PIKFYVE	PIKFYVE	94	1000
HTH-02-006	PIM1	PIM1	98	1000
HTH-02-006	PIM2	PIM2	100	1000
HTH-02-006	PIM3	PIM3	100	1000
HTH-02-006	PIP5K1A	PIP5K1A	61	1000
HTH-02-006	PIP5K1C	PIP5K1C	81	1000
HTH-02-006	PIP5K2B	PIP4K2B	88	1000
HTH-02-006	PIP5K2C	PIP4K2C	100	1000
HTH-02-006	PKAC-alpha	PRKACA	100	1000
HTH-02-006	PKAC-beta	PRKACB	100	1000
HTH-02-006	PKMYT1	PKMYT1	100	1000
HTH-02-006	PKN1	PKN1	90	1000
HTH-02-006	PKN2	PKN2	100	1000
HTH-02-006	PKNB(M.tuberculosis)	pknB	43	1000
HTH-02-006	PLK1	PLK1	83	1000
HTH-02-006	PLK2	PLK2	100	1000
HTH-02-006	PLK3	PLK3	100	1000
HTH-02-006	PLK4	PLK4	23	1000
HTH-02-006	PRKCD	PRKCD	100	1000
HTH-02-006	PRKCE	PRKCE	100	1000
HTH-02-006	PRKCH	PRKCH	70	1000
HTH-02-006	PRKCI	PRKCI	66	1000
HTH-02-006	PRKCQ	PRKCQ	86	1000
HTH-02-006	PRKD1	PRKD1	87	1000
HTH-02-006	PRKD2	PRKD2	41	1000
HTH-02-006	PRKD3	PRKD3	25	1000
HTH-02-006	PRKG1	PRKG1	65	1000
HTH-02-006	PRKG2	PRKG2	90	1000
HTH-02-006	PRKR	EIF2AK2	90	1000
HTH-02-006	PRKX	PRKX	98	1000
HTH-02-006	PRP4	PRPF4B	71	1000
HTH-02-006	PYK2	PTK2B	28	1000
HTH-02-006	QSK	KIAA0999	100	1000
HTH-02-006	RAF1	RAF1	84	1000
HTH-02-006	RET	RET	100	1000
HTH-02-006	RET(M918T)	RET	86	1000

HTH-02-006	RET(V804L)	RET	50	1000
HTH-02-006	RET(V804M)	RET	17	1000
HTH-02-006	RIOK1	RIOK1	95	1000
HTH-02-006	RIOK2	RIOK2	85	1000
HTH-02-006	RIOK3	RIOK3	84	1000
HTH-02-006	RIPK1	RIPK1	81	1000
HTH-02-006	RIPK2	RIPK2	100	1000
HTH-02-006	RIPK4	RIPK4	96	1000
HTH-02-006	RIPK5	DSTYK	79	1000
HTH-02-006	ROCK1	ROCK1	85	1000
HTH-02-006	ROCK2	ROCK2	82	1000
HTH-02-006	ROS1	ROS1	67	1000
HTH-02-006	RPS6KA4(Kin.Dom.1-N-terminal)	RPS6KA4	100	1000
HTH-02-006	RPS6KA4(Kin.Dom.2-C-terminal)	RPS6KA4	100	1000
HTH-02-006	RPS6KA5(Kin.Dom.1-N-terminal)	RPS6KA5	70	1000
HTH-02-006	RPS6KA5(Kin.Dom.2-C-terminal)	RPS6KA5	100	1000
HTH-02-006	RSK1(Kin.Dom.1-N-terminal)	RPS6KA1	62	1000
HTH-02-006	RSK1(Kin.Dom.2-C-terminal)	RPS6KA1	88	1000
HTH-02-006	RSK2(Kin.Dom.1-N-terminal)	RPS6KA3	50	1000
HTH-02-006	RSK2(Kin.Dom.2-C-terminal)	RPS6KA3	100	1000
HTH-02-006	RSK3(Kin.Dom.1-N-terminal)	RPS6KA2	68	1000
HTH-02-006	RSK3(Kin.Dom.2-C-terminal)	RPS6KA2	82	1000
HTH-02-006	RSK4(Kin.Dom.1-N-terminal)	RPS6KA6	100	1000
HTH-02-006	RSK4(Kin.Dom.2-C-terminal)	RPS6KA6	88	1000
HTH-02-006	S6K1	RPS6KB1	100	1000
HTH-02-006	SBK1	SBK1	59	1000
HTH-02-006	SGK	SGK1	86	1000
HTH-02-006	SgK110	SgK110	100	1000
HTH-02-006	SGK2	SGK2	84	1000
HTH-02-006	SGK3	SGK3	100	1000
HTH-02-006	SIK	SIK1	68	1000
HTH-02-006	SIK2	SIK2	100	1000
HTH-02-006	SLK	SLK	100	1000
HTH-02-006	SNARK	NUAK2	6.6	1000
HTH-02-006	SNRK	SNRK	95	1000
HTH-02-006	SRC	SRC	100	1000
HTH-02-006	SRMS	SRMS	100	1000
HTH-02-006	SRPK1	SRPK1	71	1000
HTH-02-006	SRPK2	SRPK2	93	1000
HTH-02-006	SRPK3	SRPK3	100	1000
HTH-02-006	STK16	STK16	73	1000
HTH-02-006	STK33	STK33	2.4	1000
HTH-02-006	STK35	STK35	100	1000
HTH-02-006	STK36	STK36	100	1000
HTH-02-006	STK39	STK39	86	1000
HTH-02-006	SYK	SYK	100	1000
HTH-02-006	TAK1	MAP3K7	35	1000

HTH-02-006	TAOK1	TAOK1	100	1000
HTH-02-006	TAOK2	TAOK2	99	1000
HTH-02-006	TAOK3	TAOK3	100	1000
HTH-02-006	TBK1	TBK1	59	1000
HTH-02-006	TEC	TEC	100	1000
HTH-02-006	TESK1	TESK1	73	1000
HTH-02-006	TGFBR1	TGFBR1	64	1000
HTH-02-006	TGFBR2	TGFBR2	100	1000
HTH-02-006	TIE1	TIE1	100	1000
HTH-02-006	TIE2	TEK	72	1000
HTH-02-006	TLK1	TLK1	100	1000
HTH-02-006	TLK2	TLK2	100	1000
HTH-02-006	TNIK	TNIK	86	1000
HTH-02-006	TNK1	TNK1	100	1000
HTH-02-006	TNK2	TNK2	76	1000
HTH-02-006	TNNI3K	TNNI3K	100	1000
HTH-02-006	TRKA	NTRK1	83	1000
HTH-02-006	TRKB	NTRK2	100	1000
HTH-02-006	TRKC	NTRK3	100	1000
HTH-02-006	TRPM6	TRPM6	100	1000
HTH-02-006	TSSK1B	TSSK1B	13	1000
HTH-02-006	TSSK3	TSSK3	68	1000
HTH-02-006	TTK	TTK	8.8	1000
HTH-02-006	TXK	TXK	56	1000
HTH-02-006	TYK2(JH1domain-catalytic)	TYK2	100	1000
HTH-02-006	TYK2(JH2domain-pseudokinase)	TYK2	100	1000
HTH-02-006	TYRO3	TYRO3	100	1000
HTH-02-006	ULK1	ULK1	6	1000
HTH-02-006	ULK2	ULK2	1.6	1000
HTH-02-006	ULK3	ULK3	90	1000
HTH-02-006	VEGFR2	KDR	100	1000
HTH-02-006	VPS34	PIK3C3	93	1000
HTH-02-006	VRK2	VRK2	100	1000
HTH-02-006	WEE1	WEE1	96	1000
HTH-02-006	WEE2	WEE2	69	1000
HTH-02-006	WNK1	WNK1	92	1000
HTH-02-006	WNK2	WNK2	100	1000
HTH-02-006	WNK3	WNK3	92	1000
HTH-02-006	WNK4	WNK4	100	1000
HTH-02-006	YANK1	STK32A	97	1000
HTH-02-006	YANK2	STK32B	66	1000
HTH-02-006	YANK3	STK32C	89	1000
HTH-02-006	YES	YES1	100	1000
HTH-02-006	YSK1	STK25	100	1000
HTH-02-006	YSK4	MAP3K19	22	1000
HTH-02-006	ZAK	ZAK	80	1000
HTH-02-006	ZAP70	ZAP70	88	1000