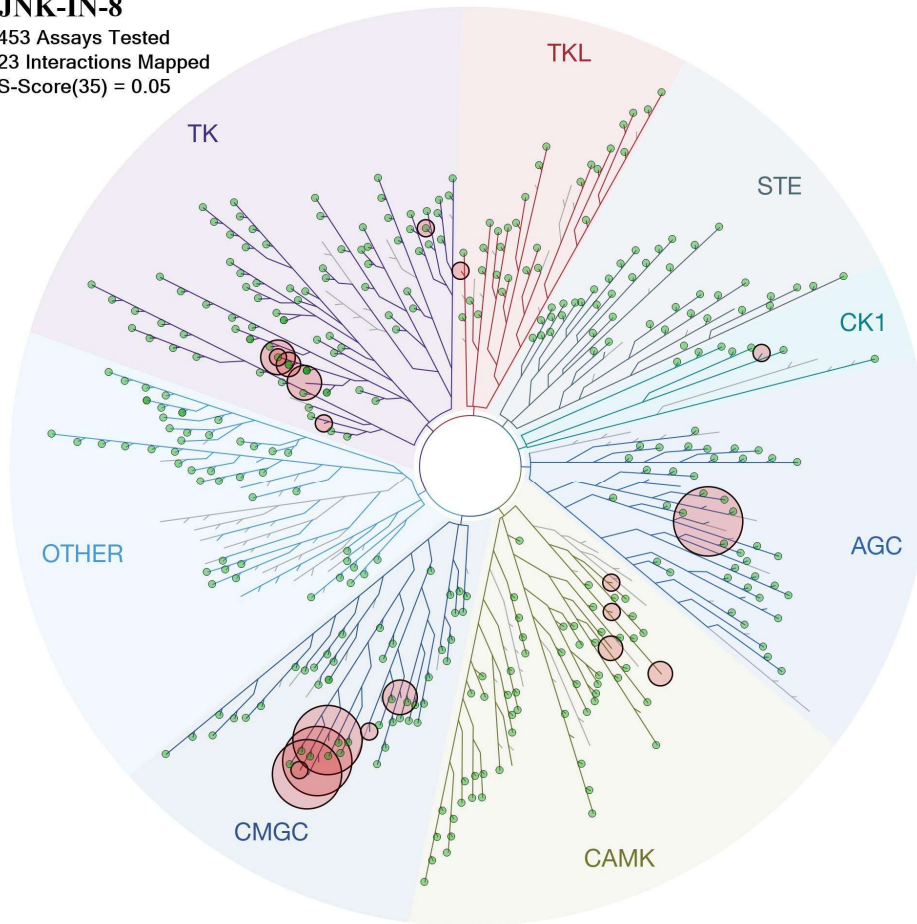


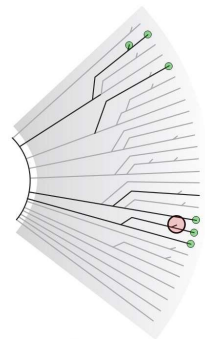
# JNK-IN-8

453 Assays Tested  
23 Interactions Mapped  
S-Score(35) = 0.05

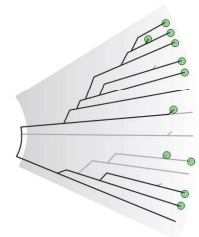


ATYPICAL

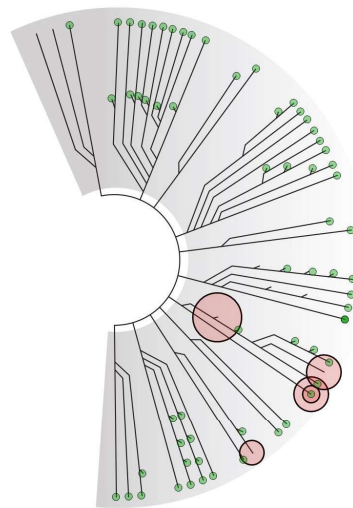
MUTANT



LIPID



PATHOGEN



Compound Name	DiscoverX Gene Symbol	Entrez Gene Symbol	Percent Control	Compound Concentration (nM)
JNK-IN-8	AAK1	AAK1	69	1000
JNK-IN-8	ABL1(E255K)-phosphorylated	ABL1	100	1000
JNK-IN-8	ABL1(F317I)-nonphosphorylated	ABL1	87	1000
JNK-IN-8	ABL1(F317I)-phosphorylated	ABL1	100	1000
JNK-IN-8	ABL1(F317L)-nonphosphorylated	ABL1	65	1000
JNK-IN-8	ABL1(F317L)-phosphorylated	ABL1	61	1000
JNK-IN-8	ABL1(H396P)-nonphosphorylated	ABL1	42	1000
JNK-IN-8	ABL1(H396P)-phosphorylated	ABL1	60	1000
JNK-IN-8	ABL1(M351T)-phosphorylated	ABL1	81	1000
JNK-IN-8	ABL1(Q252H)-nonphosphorylated	ABL1	100	1000
JNK-IN-8	ABL1(Q252H)-phosphorylated	ABL1	56	1000
JNK-IN-8	ABL1(T315I)-nonphosphorylated	ABL1	100	1000
JNK-IN-8	ABL1(T315I)-phosphorylated	ABL1	92	1000
JNK-IN-8	ABL1(Y253F)-phosphorylated	ABL1	71	1000
JNK-IN-8	ABL1-nonphosphorylated	ABL1	97	1000
JNK-IN-8	ABL1-phosphorylated	ABL1	100	1000
JNK-IN-8	ABL2	ABL2	97	1000
JNK-IN-8	ACVR1	ACVR1	100	1000
JNK-IN-8	ACVR1B	ACVR1B	88	1000
JNK-IN-8	ACVR2A	ACVR2A	100	1000
JNK-IN-8	ACVR2B	ACVR2B	100	1000
JNK-IN-8	ACVRL1	ACVRL1	96	1000
JNK-IN-8	ADCK3	CABC1	100	1000
JNK-IN-8	ADCK4	ADCK4	93	1000
JNK-IN-8	AKT1	AKT1	100	1000
JNK-IN-8	AKT2	AKT2	100	1000
JNK-IN-8	AKT3	AKT3	100	1000
JNK-IN-8	ALK	ALK	85	1000
JNK-IN-8	AMPK-alpha1	PRKAA1	100	1000
JNK-IN-8	AMPK-alpha2	PRKAA2	84	1000
JNK-IN-8	ANKK1	ANKK1	75	1000
JNK-IN-8	ARK5	NUAK1	100	1000
JNK-IN-8	ASK1	MAP3K5	100	1000
JNK-IN-8	ASK2	MAP3K6	93	1000
JNK-IN-8	AURKA	AURKA	100	1000
JNK-IN-8	AURKA	AURKA	84	1000
JNK-IN-8	AURKB	AURKB	83	1000
JNK-IN-8	AURKB	AURKB	96	1000
JNK-IN-8	AURKC	AURKC	95	1000
JNK-IN-8	AXL	AXL	77	1000
JNK-IN-8	BIKE	BMP2K	94	1000
JNK-IN-8	BLK	BLK	65	1000
JNK-IN-8	BMPR1A	BMPR1A	100	1000
JNK-IN-8	BMPR1B	BMPR1B	92	1000
JNK-IN-8	BMPR2	BMPR2	77	1000

JNK-IN-8	BMX	BMX	100	1000
JNK-IN-8	BRAF	BRAF	90	1000
JNK-IN-8	BRAF(V600E)	BRAF	100	1000
JNK-IN-8	BRK	PTK6	100	1000
JNK-IN-8	BRSK1	BRSK1	100	1000
JNK-IN-8	BRSK2	BRSK2	99	1000
JNK-IN-8	BTK	BTK	100	1000
JNK-IN-8	CAMK1	CAMK1	81	1000
JNK-IN-8	CAMK1D	CAMK1D	100	1000
JNK-IN-8	CAMK1G	CAMK1G	100	1000
JNK-IN-8	CAMK2A	CAMK2A	100	1000
JNK-IN-8	CAMK2B	CAMK2B	100	1000
JNK-IN-8	CAMK2D	CAMK2D	100	1000
JNK-IN-8	CAMK2G	CAMK2G	100	1000
JNK-IN-8	CAMK4	CAMK4	100	1000
JNK-IN-8	CAMKK1	CAMKK1	100	1000
JNK-IN-8	CAMKK2	CAMKK2	93	1000
JNK-IN-8	CASK	CASK	100	1000
JNK-IN-8	CDC2L1	CDK11B	100	1000
JNK-IN-8	CDC2L2	CDC2L2	98	1000
JNK-IN-8	CDC2L5	CDK13	100	1000
JNK-IN-8	CDK11	CDK19	62	1000
JNK-IN-8	CDK2	CDK2	77	1000
JNK-IN-8	CDK3	CDK3	100	1000
JNK-IN-8	CDK4-cyclinD1	CDK4	92	1000
JNK-IN-8	CDK4-cyclinD3	CDK4	60	1000
JNK-IN-8	CDK5	CDK5	100	1000
JNK-IN-8	CDK7	CDK7	39	1000
JNK-IN-8	CDK8	CDK8	51	1000
JNK-IN-8	CDK9	CDK9	100	1000
JNK-IN-8	CDKL1	CDKL1	88	1000
JNK-IN-8	CDKL2	CDKL2	82	1000
JNK-IN-8	CDKL3	CDKL3	100	1000
JNK-IN-8	CDKL5	CDKL5	100	1000
JNK-IN-8	CHEK1	CHEK1	99	1000
JNK-IN-8	CHEK2	CHEK2	95	1000
JNK-IN-8	CIT	CIT	100	1000
JNK-IN-8	CLK1	CLK1	100	1000
JNK-IN-8	CLK2	CLK2	95	1000
JNK-IN-8	CLK3	CLK3	100	1000
JNK-IN-8	CLK4	CLK4	93	1000
JNK-IN-8	CSF1R	CSF1R	8.6	1000
JNK-IN-8	CSF1R	CSF1R	96	1000
JNK-IN-8	CSF1R-autoinhibited	CSF1R	65	1000
JNK-IN-8	CSK	CSK	100	1000
JNK-IN-8	CSNK1A1	CSNK1A1	73	1000
JNK-IN-8	CSNK1A1L	CSNK1A1L	71	1000

JNK-IN-8	CSNK1D	CSNK1D	18	1000
JNK-IN-8	CSNK1E	CSNK1E	70	1000
JNK-IN-8	CSNK1G1	CSNK1G1	100	1000
JNK-IN-8	CSNK1G2	CSNK1G2	73	1000
JNK-IN-8	CSNK1G3	CSNK1G3	100	1000
JNK-IN-8	CSNK2A1	CSNK2A1	57	1000
JNK-IN-8	CSNK2A2	CSNK2A2	39	1000
JNK-IN-8	CTK	MATK	81	1000
JNK-IN-8	DAPK1	DAPK1	100	1000
JNK-IN-8	DAPK2	DAPK2	77	1000
JNK-IN-8	DAPK3	DAPK3	100	1000
JNK-IN-8	DCAMKL1	DCLK1	100	1000
JNK-IN-8	DCAMKL2	DCLK2	94	1000
JNK-IN-8	DCAMKL3	DCLK3	100	1000
JNK-IN-8	DDR1	DDR1	93	1000
JNK-IN-8	DDR2	DDR2	89	1000
JNK-IN-8	DLK	MAP3K12	99	1000
JNK-IN-8	DMPK	DMPK	63	1000
JNK-IN-8	DMPK2	CDC42BPG	86	1000
JNK-IN-8	DRAK1	STK17A	24	1000
JNK-IN-8	DRAK2	STK17B	72	1000
JNK-IN-8	DYRK1A	DYRK1A	81	1000
JNK-IN-8	DYRK1B	DYRK1B	100	1000
JNK-IN-8	DYRK2	DYRK2	20	1000
JNK-IN-8	EGFR	EGFR	100	1000
JNK-IN-8	EGFR(E746-A750del)	EGFR	90	1000
JNK-IN-8	EGFR(G719C)	EGFR	81	1000
JNK-IN-8	EGFR(G719S)	EGFR	90	1000
JNK-IN-8	EGFR(L747-E749del, A750P)	EGFR	84	1000
JNK-IN-8	EGFR(L747-S752del, P753S)	EGFR	81	1000
JNK-IN-8	EGFR(L747-T751del,Sins)	EGFR	95	1000
JNK-IN-8	EGFR(L858R)	EGFR	100	1000
JNK-IN-8	EGFR(L858R,T790M)	EGFR	81	1000
JNK-IN-8	EGFR(L861Q)	EGFR	100	1000
JNK-IN-8	EGFR(S752-I759del)	EGFR	79	1000
JNK-IN-8	EGFR(T790M)	EGFR	100	1000
JNK-IN-8	EIF2AK1	EIF2AK1	100	1000
JNK-IN-8	EPHA1	EPHA1	99	1000
JNK-IN-8	EPHA2	EPHA2	100	1000
JNK-IN-8	EPHA3	EPHA3	67	1000
JNK-IN-8	EPHA4	EPHA4	100	1000
JNK-IN-8	EPHA5	EPHA5	100	1000
JNK-IN-8	EPHA6	EPHA6	100	1000
JNK-IN-8	EPHA7	EPHA7	100	1000
JNK-IN-8	EPHA8	EPHA8	100	1000
JNK-IN-8	EPHB1	EPHB1	100	1000
JNK-IN-8	EPHB2	EPHB2	100	1000

JNK-IN-8	EPHB3	EPHB3	100	1000
JNK-IN-8	EPHB4	EPHB4	100	1000
JNK-IN-8	EPHB6	EPHB6	71	1000
JNK-IN-8	ERBB2	ERBB2	82	1000
JNK-IN-8	ERBB3	ERBB3	93	1000
JNK-IN-8	ERBB4	ERBB4	96	1000
JNK-IN-8	ERK1	MAPK3	100	1000
JNK-IN-8	ERK2	MAPK1	99	1000
JNK-IN-8	ERK3	MAPK6	37	1000
JNK-IN-8	ERK4	MAPK4	81	1000
JNK-IN-8	ERK5	MAPK7	100	1000
JNK-IN-8	ERK8	MAPK15	100	1000
JNK-IN-8	ERN1	ERN1	73	1000
JNK-IN-8	FAK	PTK2	11	1000
JNK-IN-8	FER	FER	100	1000
JNK-IN-8	FES	FES	89	1000
JNK-IN-8	FGFR1	FGFR1	94	1000
JNK-IN-8	FGFR2	FGFR2	79	1000
JNK-IN-8	FGFR3	FGFR3	100	1000
JNK-IN-8	FGFR3(G697C)	FGFR3	100	1000
JNK-IN-8	FGFR4	FGFR4	100	1000
JNK-IN-8	FGR	FGR	100	1000
JNK-IN-8	FLT1	FLT1	100	1000
JNK-IN-8	FLT3	FLT3	62	1000
JNK-IN-8	FLT3	FLT3	77	1000
JNK-IN-8	FLT3(D835H)	FLT3	82	1000
JNK-IN-8	FLT3(D835Y)	FLT3	58	1000
JNK-IN-8	FLT3(ITD)	FLT3	50	1000
JNK-IN-8	FLT3(K663Q)	FLT3	75	1000
JNK-IN-8	FLT3(N841I)	FLT3	93	1000
JNK-IN-8	FLT3(R834Q)	FLT3	100	1000
JNK-IN-8	FLT3-autoinhibited	FLT3	100	1000
JNK-IN-8	FLT4	FLT4	100	1000
JNK-IN-8	FRK	FRK	100	1000
JNK-IN-8	FYN	FYN	79	1000
JNK-IN-8	GAK	GAK	92	1000
JNK-IN-8	GCN2(Kin.Dom.2,S808G)	EIF2AK4	100	1000
JNK-IN-8	GRK1	GRK1	100	1000
JNK-IN-8	GRK4	GRK4	96	1000
JNK-IN-8	GRK7	GRK7	72	1000
JNK-IN-8	GSK3A	GSK3A	92	1000
JNK-IN-8	GSK3B	GSK3B	100	1000
JNK-IN-8	HCK	HCK	100	1000
JNK-IN-8	HIPK1	HIPK1	100	1000
JNK-IN-8	HIPK2	HIPK2	71	1000
JNK-IN-8	HIPK3	HIPK3	100	1000
JNK-IN-8	HIPK4	HIPK4	4	1000

JNK-IN-8	HPK1	MAP4K1	89	1000
JNK-IN-8	HUNK	HUNK	53	1000
JNK-IN-8	ICK	ICK	92	1000
JNK-IN-8	IGF1R	IGF1R	93	1000
JNK-IN-8	IKK-alpha	CHUK	100	1000
JNK-IN-8	IKK-beta	IKBKB	99	1000
JNK-IN-8	IKK-epsilon	IKBKE	91	1000
JNK-IN-8	INSR	INSR	14	1000
JNK-IN-8	INSR	INSR	81	1000
JNK-IN-8	INSRR	INSRR	100	1000
JNK-IN-8	IRAK1	IRAK1	13	1000
JNK-IN-8	IRAK3	IRAK3	85	1000
JNK-IN-8	IRAK4	IRAK4	93	1000
JNK-IN-8	ITK	ITK	100	1000
JNK-IN-8	JAK1(JH1domain-catalytic)	JAK1	98	1000
JNK-IN-8	JAK1(JH2domain-pseudokinase)	JAK1	91	1000
JNK-IN-8	JAK2(JH1domain-catalytic)	JAK2	100	1000
JNK-IN-8	JAK3(JH1domain-catalytic)	JAK3	87	1000
JNK-IN-8	JNK1	MAPK8	0	1000
JNK-IN-8	JNK2	MAPK9	0	1000
JNK-IN-8	JNK3	MAPK10	0	1000
JNK-IN-8	KIT	KIT	3.5	1000
JNK-IN-8	KIT	KIT	10	1000
JNK-IN-8	KIT(A829P)	KIT	69	1000
JNK-IN-8	KIT(D816H)	KIT	68	1000
JNK-IN-8	KIT(D816V)	KIT	54	1000
JNK-IN-8	KIT(L576P)	KIT	100	1000
JNK-IN-8	KIT(V559D)	KIT	0.95	1000
JNK-IN-8	KIT(V559D,T670I)	KIT	4.4	1000
JNK-IN-8	KIT(V559D,V654A)	KIT	81	1000
JNK-IN-8	KIT-autoinhibited	KIT	77	1000
JNK-IN-8	LATS1	LATS1	91	1000
JNK-IN-8	LATS2	LATS2	74	1000
JNK-IN-8	LCK	LCK	100	1000
JNK-IN-8	LIMK1	LIMK1	74	1000
JNK-IN-8	LIMK2	LIMK2	98	1000
JNK-IN-8	LKB1	STK11	100	1000
JNK-IN-8	LOK	STK10	100	1000
JNK-IN-8	LRRK2	LRRK2	50	1000
JNK-IN-8	LRRK2(G2019S)	LRRK2	67	1000
JNK-IN-8	LTK	LTK	100	1000
JNK-IN-8	LYN	LYN	87	1000
JNK-IN-8	LZK	MAP3K13	93	1000
JNK-IN-8	MAK	MAK	100	1000
JNK-IN-8	MAP3K1	MAP3K1	100	1000
JNK-IN-8	MAP3K15	MAP3K15	82	1000
JNK-IN-8	MAP3K2	MAP3K2	100	1000

JNK-IN-8	MAP3K3	MAP3K3	95	1000
JNK-IN-8	MAP3K4	MAP3K4	100	1000
JNK-IN-8	MAP4K2	MAP4K2	67	1000
JNK-IN-8	MAP4K3	MAP4K3	100	1000
JNK-IN-8	MAP4K4	MAP4K4	92	1000
JNK-IN-8	MAP4K5	MAP4K5	100	1000
JNK-IN-8	MAPKAPK2	MAPKAPK2	100	1000
JNK-IN-8	MAPKAPK5	MAPKAPK5	74	1000
JNK-IN-8	MARK1	MARK1	100	1000
JNK-IN-8	MARK2	MARK2	77	1000
JNK-IN-8	MARK3	MARK3	100	1000
JNK-IN-8	MARK4	MARK4	97	1000
JNK-IN-8	MAST1	MAST1	97	1000
JNK-IN-8	MEK1	MAP2K1	94	1000
JNK-IN-8	MEK2	MAP2K2	91	1000
JNK-IN-8	MEK3	MAP2K3	95	1000
JNK-IN-8	MEK4	MAP2K4	70	1000
JNK-IN-8	MEK5	MAP2K5	67	1000
JNK-IN-8	MEK6	MAP2K6	95	1000
JNK-IN-8	MELK	MELK	71	1000
JNK-IN-8	MERTK	MERTK	100	1000
JNK-IN-8	MET	MET	100	1000
JNK-IN-8	MET(M1250T)	MET	6.2	1000
JNK-IN-8	MET(Y1235D)	MET	100	1000
JNK-IN-8	MINK	MINK1	71	1000
JNK-IN-8	MKK7	MAP2K7	59	1000
JNK-IN-8	MKNK1	MKNK1	81	1000
JNK-IN-8	MKNK2	MKNK2	6.8	1000
JNK-IN-8	MLCK	MYLK3	100	1000
JNK-IN-8	MLK1	MAP3K9	100	1000
JNK-IN-8	MLK2	MAP3K10	87	1000
JNK-IN-8	MLK3	MAP3K11	91	1000
JNK-IN-8	MRCKA	CDC42BPA	100	1000
JNK-IN-8	MRCKB	CDC42BPB	68	1000
JNK-IN-8	MST1	STK4	100	1000
JNK-IN-8	MST1R	MST1R	100	1000
JNK-IN-8	MST2	STK3	49	1000
JNK-IN-8	MST3	STK24	79	1000
JNK-IN-8	MST4	MST4	82	1000
JNK-IN-8	MTOR	MTOR	100	1000
JNK-IN-8	MUSK	MUSK	100	1000
JNK-IN-8	MYLK	MYLK	93	1000
JNK-IN-8	MYLK2	MYLK2	13	1000
JNK-IN-8	MYLK4	MYLK4	9.6	1000
JNK-IN-8	MYO3A	MYO3A	81	1000
JNK-IN-8	MYO3B	MYO3B	89	1000
JNK-IN-8	NDR1	STK38	97	1000

JNK-IN-8	NDR2	STK38L	100	1000
JNK-IN-8	NEK1	NEK1	81	1000
JNK-IN-8	NEK11	NEK11	99	1000
JNK-IN-8	NEK2	NEK2	100	1000
JNK-IN-8	NEK3	NEK3	73	1000
JNK-IN-8	NEK4	NEK4	79	1000
JNK-IN-8	NEK5	NEK5	92	1000
JNK-IN-8	NEK6	NEK6	100	1000
JNK-IN-8	NEK7	NEK7	100	1000
JNK-IN-8	NEK9	NEK9	100	1000
JNK-IN-8	NIM1	MGC42105	100	1000
JNK-IN-8	NLK	NLK	70	1000
JNK-IN-8	OSR1	OXR1	89	1000
JNK-IN-8	p38-alpha	MAPK14	100	1000
JNK-IN-8	p38-beta	MAPK11	20	1000
JNK-IN-8	p38-delta	MAPK13	100	1000
JNK-IN-8	p38-gamma	MAPK12	100	1000
JNK-IN-8	PAK1	PAK1	100	1000
JNK-IN-8	PAK2	PAK2	100	1000
JNK-IN-8	PAK3	PAK3	100	1000
JNK-IN-8	PAK4	PAK4	100	1000
JNK-IN-8	PAK6	PAK6	100	1000
JNK-IN-8	PAK7	PAK7	88	1000
JNK-IN-8	PCK1	CDK16	100	1000
JNK-IN-8	PCK2	CDK17	100	1000
JNK-IN-8	PCK3	CDK18	100	1000
JNK-IN-8	PDGFRA	PDGFRA	71	1000
JNK-IN-8	PDGFRA	PDGFRA	84	1000
JNK-IN-8	PDGFRB	PDGFRB	4.7	1000
JNK-IN-8	PDPK1	PDPK1	61	1000
JNK-IN-8	PFCDPK1(P.falciparum)	CDPK1	100	1000
JNK-IN-8	PFPK5(P.falciparum)	MAL13P1.279	90	1000
JNK-IN-8	PFTAIRE2	CDK15	100	1000
JNK-IN-8	PFTK1	CDK14	88	1000
JNK-IN-8	PHKG1	PHKG1	87	1000
JNK-IN-8	PHKG2	PHKG2	89	1000
JNK-IN-8	PIK3C2B	PIK3C2B	100	1000
JNK-IN-8	PIK3C2G	PIK3C2G	81	1000
JNK-IN-8	PIK3CA	PIK3CA	100	1000
JNK-IN-8	PIK3CA(C420R)	PIK3CA	99	1000
JNK-IN-8	PIK3CA(E542K)	PIK3CA	100	1000
JNK-IN-8	PIK3CA(E545A)	PIK3CA	95	1000
JNK-IN-8	PIK3CA(E545K)	PIK3CA	100	1000
JNK-IN-8	PIK3CA(H1047L)	PIK3CA	100	1000
JNK-IN-8	PIK3CA(H1047Y)	PIK3CA	96	1000
JNK-IN-8	PIK3CA(I800L)	PIK3CA	88	1000
JNK-IN-8	PIK3CA(M1043I)	PIK3CA	94	1000



JNK-IN-8	PIK3CA(Q546K)	PIK3CA	100	1000
JNK-IN-8	PIK3CB	PIK3CB	79	1000
JNK-IN-8	PIK3CD	PIK3CD	95	1000
JNK-IN-8	PIK3CG	PIK3CG	100	1000
JNK-IN-8	PIK4CB	PI4KB	82	1000
JNK-IN-8	PIM1	PIM1	100	1000
JNK-IN-8	PIM2	PIM2	100	1000
JNK-IN-8	PIM3	PIM3	56	1000
JNK-IN-8	PIP5K1A	PIP5K1A	75	1000
JNK-IN-8	PIP5K1C	PIP5K1C	93	1000
JNK-IN-8	PIP5K2B	PIP4K2B	99	1000
JNK-IN-8	PIP5K2C	PIP4K2C	46	1000
JNK-IN-8	PKAC-alpha	PRKACA	100	1000
JNK-IN-8	PKAC-beta	PRKACB	76	1000
JNK-IN-8	PKMYT1	PKMYT1	69	1000
JNK-IN-8	PKN1	PKN1	94	1000
JNK-IN-8	PKN2	PKN2	58	1000
JNK-IN-8	PKNB(M.tuberculosis)	pknB	100	1000
JNK-IN-8	PLK1	PLK1	100	1000
JNK-IN-8	PLK2	PLK2	79	1000
JNK-IN-8	PLK3	PLK3	66	1000
JNK-IN-8	PLK4	PLK4	58	1000
JNK-IN-8	PRKCD	PRKCD	100	1000
JNK-IN-8	PRKCE	PRKCE	81	1000
JNK-IN-8	PRKCH	PRKCH	94	1000
JNK-IN-8	PRKCI	PRKCI	93	1000
JNK-IN-8	PRKCQ	PRKCQ	100	1000
JNK-IN-8	PRKD1	PRKD1	100	1000
JNK-IN-8	PRKD2	PRKD2	100	1000
JNK-IN-8	PRKD3	PRKD3	80	1000
JNK-IN-8	PRKG1	PRKG1	72	1000
JNK-IN-8	PRKG2	PRKG2	97	1000
JNK-IN-8	PRKR	EIF2AK2	82	1000
JNK-IN-8	PRKX	PRKX	0	1000
JNK-IN-8	PRP4	PRPF4B	100	1000
JNK-IN-8	PYK2	PTK2B	87	1000
JNK-IN-8	QSK	KIAA0999	100	1000
JNK-IN-8	RAF1	RAF1	93	1000
JNK-IN-8	RET	RET	100	1000
JNK-IN-8	RET(M918T)	RET	90	1000
JNK-IN-8	RET(V804L)	RET	100	1000
JNK-IN-8	RET(V804M)	RET	100	1000
JNK-IN-8	RIOK1	RIOK1	100	1000
JNK-IN-8	RIOK2	RIOK2	10	1000
JNK-IN-8	RIOK3	RIOK3	72	1000
JNK-IN-8	RIPK1	RIPK1	51	1000
JNK-IN-8	RIPK2	RIPK2	99	1000

JNK-IN-8	RIPK4	RIPK4	79	1000
JNK-IN-8	RIPK5	DSTYK	100	1000
JNK-IN-8	ROCK1	ROCK1	63	1000
JNK-IN-8	ROCK2	ROCK2	49	1000
JNK-IN-8	ROS1	ROS1	90	1000
JNK-IN-8	RPS6KA4(Kin.Dom.1-N-terminal)	RPS6KA4	79	1000
JNK-IN-8	RPS6KA4(Kin.Dom.2-C-terminal)	RPS6KA4	74	1000
JNK-IN-8	RPS6KA5(Kin.Dom.1-N-terminal)	RPS6KA5	100	1000
JNK-IN-8	RPS6KA5(Kin.Dom.2-C-terminal)	RPS6KA5	97	1000
JNK-IN-8	RSK1(Kin.Dom.1-N-terminal)	RPS6KA1	99	1000
JNK-IN-8	RSK1(Kin.Dom.2-C-terminal)	RPS6KA1	89	1000
JNK-IN-8	RSK2(Kin.Dom.1-N-terminal)	RPS6KA3	100	1000
JNK-IN-8	RSK3(Kin.Dom.1-N-terminal)	RPS6KA2	100	1000
JNK-IN-8	RSK3(Kin.Dom.2-C-terminal)	RPS6KA2	100	1000
JNK-IN-8	RSK4(Kin.Dom.1-N-terminal)	RPS6KA6	100	1000
JNK-IN-8	RSK4(Kin.Dom.2-C-terminal)	RPS6KA6	76	1000
JNK-IN-8	S6K1	RPS6KB1	100	1000
JNK-IN-8	SBK1	SBK1	96	1000
JNK-IN-8	SgK110	SgK110	95	1000
JNK-IN-8	SGK3	SGK3	48	1000
JNK-IN-8	SIK	SIK1	100	1000
JNK-IN-8	SIK2	SIK2	88	1000
JNK-IN-8	SLK	SLK	100	1000
JNK-IN-8	SNARK	NUAK2	70	1000
JNK-IN-8	SNRK	SNRK	100	1000
JNK-IN-8	SRC	SRC	87	1000
JNK-IN-8	SRMS	SRMS	94	1000
JNK-IN-8	SRPK1	SRPK1	99	1000
JNK-IN-8	SRPK2	SRPK2	100	1000
JNK-IN-8	SRPK3	SRPK3	70	1000
JNK-IN-8	STK16	STK16	61	1000
JNK-IN-8	STK33	STK33	100	1000
JNK-IN-8	STK35	STK35	68	1000
JNK-IN-8	STK36	STK36	91	1000
JNK-IN-8	STK39	STK39	95	1000
JNK-IN-8	SYK	SYK	100	1000
JNK-IN-8	TAK1	MAP3K7	61	1000
JNK-IN-8	TAOK1	TAOK1	67	1000
JNK-IN-8	TAOK2	TAOK2	73	1000
JNK-IN-8	TAOK3	TAOK3	67	1000
JNK-IN-8	TBK1	TBK1	100	1000
JNK-IN-8	TEC	TEC	100	1000
JNK-IN-8	TESK1	TESK1	100	1000
JNK-IN-8	TGFBR1	TGFBR1	89	1000
JNK-IN-8	TGFBR2	TGFBR2	64	1000
JNK-IN-8	TIE1	TIE1	91	1000
JNK-IN-8	TIE2	TEK	76	1000

JNK-IN-8	TLK1	TLK1	98	1000
JNK-IN-8	TLK2	TLK2	100	1000
JNK-IN-8	TNIK	TNIK	56	1000
JNK-IN-8	TNK1	TNK1	60	1000
JNK-IN-8	TNK2	TNK2	90	1000
JNK-IN-8	TNNI3K	TNNI3K	100	1000
JNK-IN-8	TRKA	NTRK1	87	1000
JNK-IN-8	TRKB	NTRK2	96	1000
JNK-IN-8	TRKC	NTRK3	79	1000
JNK-IN-8	TRPM6	TRPM6	98	1000
JNK-IN-8	TSSK1B	TSSK1B	100	1000
JNK-IN-8	TTK	TTK	46	1000
JNK-IN-8	TXK	TXK	96	1000
JNK-IN-8	TYK2(JH1domain-catalytic)	TYK2	96	1000
JNK-IN-8	TYK2(JH2domain-pseudokinase)	TYK2	80	1000
JNK-IN-8	TYRO3	TYRO3	85	1000
JNK-IN-8	ULK1	ULK1	100	1000
JNK-IN-8	ULK2	ULK2	96	1000
JNK-IN-8	ULK3	ULK3	40	1000
JNK-IN-8	VEGFR2	KDR	90	1000
JNK-IN-8	VEGFR2	KDR	96	1000
JNK-IN-8	VRK2	VRK2	97	1000
JNK-IN-8	WEE1	WEE1	100	1000
JNK-IN-8	WEE2	WEE2	100	1000
JNK-IN-8	YANK1	STK32A	78	1000
JNK-IN-8	YANK2	STK32B	90	1000
JNK-IN-8	YANK3	STK32C	95	1000
JNK-IN-8	YES	YES1	86	1000
JNK-IN-8	YSK1	STK25	92	1000
JNK-IN-8	YSK4	MAP3K19	65	1000
JNK-IN-8	ZAK	ZAK	100	1000
JNK-IN-8	ZAP70	ZAP70	79	1000