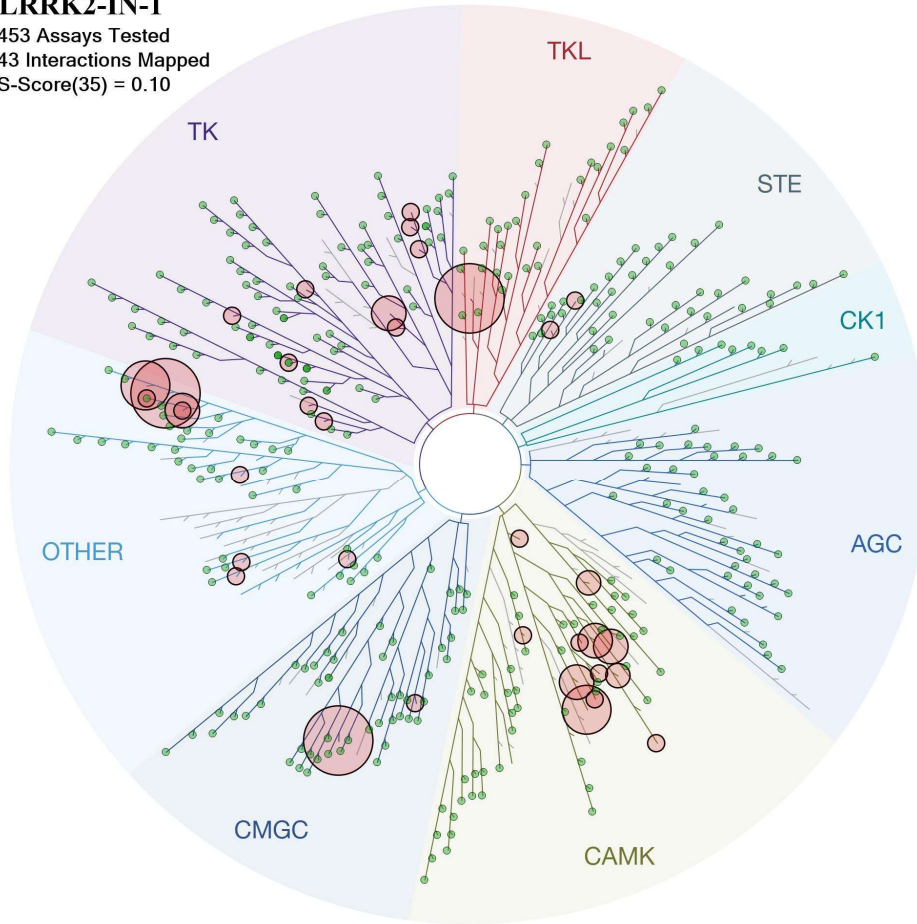
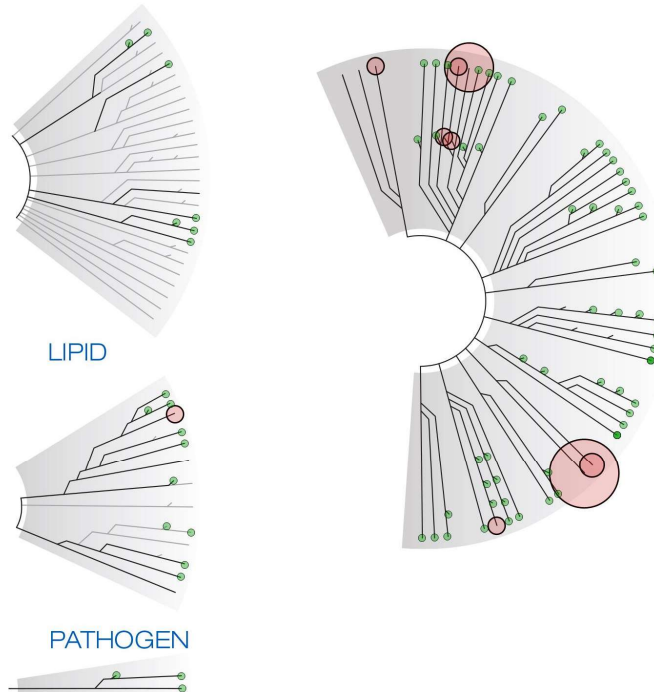


LRRK2-IN-1
453 Assays Tested
43 Interactions Mapped
S-Score(35) = 0.10



ATYPICAL

MUTANT



Compound Name	DiscoverX Gene Symbol	Entrez Gene Symbol	Percent Control	Compound Concentration (nM)
LRRK2-IN-1	AAK1	AAK1	84	10000
LRRK2-IN-1	ABL1(E255K)-phosphorylated	ABL1	80	10000
LRRK2-IN-1	ABL1(F317I)-nonphosphorylated	ABL1	15	10000
LRRK2-IN-1	ABL1(F317I)-phosphorylated	ABL1	17	10000
LRRK2-IN-1	ABL1(F317L)-nonphosphorylated	ABL1	14	10000
LRRK2-IN-1	ABL1(F317L)-phosphorylated	ABL1	0.85	10000
LRRK2-IN-1	ABL1(H396P)-nonphosphorylated	ABL1	100	10000
LRRK2-IN-1	ABL1(H396P)-phosphorylated	ABL1	100	10000
LRRK2-IN-1	ABL1(M351T)-phosphorylated	ABL1	94	10000
LRRK2-IN-1	ABL1(Q252H)-nonphosphorylated	ABL1	100	10000
LRRK2-IN-1	ABL1(Q252H)-phosphorylated	ABL1	100	10000
LRRK2-IN-1	ABL1(T315I)-nonphosphorylated	ABL1	100	10000
LRRK2-IN-1	ABL1(T315I)-phosphorylated	ABL1	58	10000
LRRK2-IN-1	ABL1(Y253F)-phosphorylated	ABL1	89	10000
LRRK2-IN-1	ABL1-nonphosphorylated	ABL1	100	10000
LRRK2-IN-1	ABL1-phosphorylated	ABL1	82	10000
LRRK2-IN-1	ABL2	ABL2	97	10000
LRRK2-IN-1	ACVR1	ACVR1	98	10000
LRRK2-IN-1	ACVR1B	ACVR1B	100	10000
LRRK2-IN-1	ACVR2A	ACVR2A	100	10000
LRRK2-IN-1	ACVR2B	ACVR2B	100	10000
LRRK2-IN-1	ACVRL1	ACVRL1	100	10000
LRRK2-IN-1	ADCK3	CABC1	71	10000
LRRK2-IN-1	ADCK4	ADCK4	94	10000
LRRK2-IN-1	AKT1	AKT1	79	10000
LRRK2-IN-1	AKT2	AKT2	100	10000
LRRK2-IN-1	AKT3	AKT3	100	10000
LRRK2-IN-1	ALK	ALK	13	10000
LRRK2-IN-1	AMPK-alpha1	PRKAA1	51	10000
LRRK2-IN-1	AMPK-alpha2	PRKAA2	66	10000
LRRK2-IN-1	ANKK1	ANKK1	100	10000
LRRK2-IN-1	ARK5	NUAK1	47	10000
LRRK2-IN-1	ASK1	MAP3K5	100	10000
LRRK2-IN-1	ASK2	MAP3K6	100	10000
LRRK2-IN-1	AURKA	AURKA	11	10000
LRRK2-IN-1	AURKA	AURKA	1.3	10000
LRRK2-IN-1	AURKB	AURKB	35	10000
LRRK2-IN-1	AURKB	AURKB	38	10000
LRRK2-IN-1	AURKC	AURKC	50	10000
LRRK2-IN-1	AXL	AXL	100	10000
LRRK2-IN-1	BIKE	BMP2K	100	10000
LRRK2-IN-1	BLK	BLK	97	10000
LRRK2-IN-1	BMPR1A	BMPR1A	100	10000
LRRK2-IN-1	BMPR1B	BMPR1B	76	10000
LRRK2-IN-1	BMPR2	BMPR2	100	10000

LRRK2-IN-1	BMX	BMX	87	10000
LRRK2-IN-1	BRAF	BRAF	81	10000
LRRK2-IN-1	BRAF(V600E)	BRAF	100	10000
LRRK2-IN-1	BRK	PTK6	58	10000
LRRK2-IN-1	BRSK1	BRSK1	81	10000
LRRK2-IN-1	BRSK2	BRSK2	64	10000
LRRK2-IN-1	BTK	BTK	100	10000
LRRK2-IN-1	CAMK1	CAMK1	55	10000
LRRK2-IN-1	CAMK1D	CAMK1D	69	10000
LRRK2-IN-1	CAMK1G	CAMK1G	74	10000
LRRK2-IN-1	CAMK2A	CAMK2A	21	10000
LRRK2-IN-1	CAMK2B	CAMK2B	62	10000
LRRK2-IN-1	CAMK2D	CAMK2D	28	10000
LRRK2-IN-1	CAMK2G	CAMK2G	47	10000
LRRK2-IN-1	CAMK4	CAMK4	79	10000
LRRK2-IN-1	CAMKK1	CAMKK1	73	10000
LRRK2-IN-1	CAMKK2	CAMKK2	31	10000
LRRK2-IN-1	CASK	CASK	85	10000
LRRK2-IN-1	CDC2L1	CDK11B	85	10000
LRRK2-IN-1	CDC2L2	CDC2L2	82	10000
LRRK2-IN-1	CDC2L5	CDK13	100	10000
LRRK2-IN-1	CDK11	CDK19	100	10000
LRRK2-IN-1	CDK2	CDK2	100	10000
LRRK2-IN-1	CDK3	CDK3	100	10000
LRRK2-IN-1	CDK4-cyclinD1	CDK4	100	10000
LRRK2-IN-1	CDK4-cyclinD3	CDK4	100	10000
LRRK2-IN-1	CDK5	CDK5	81	10000
LRRK2-IN-1	CDK7	CDK7	86	10000
LRRK2-IN-1	CDK8	CDK8	100	10000
LRRK2-IN-1	CDK9	CDK9	100	10000
LRRK2-IN-1	CDKL1	CDKL1	78	10000
LRRK2-IN-1	CDKL2	CDKL2	100	10000
LRRK2-IN-1	CDKL3	CDKL3	83	10000
LRRK2-IN-1	CDKL5	CDKL5	100	10000
LRRK2-IN-1	CHEK1	CHEK1	100	10000
LRRK2-IN-1	CHEK2	CHEK2	66	10000
LRRK2-IN-1	CIT	CIT	99	10000
LRRK2-IN-1	CLK1	CLK1	28	10000
LRRK2-IN-1	CLK2	CLK2	72	10000
LRRK2-IN-1	CLK3	CLK3	95	10000
LRRK2-IN-1	CLK4	CLK4	54	10000
LRRK2-IN-1	CSF1R	CSF1R	34	10000
LRRK2-IN-1	CSF1R	CSF1R	98	10000
LRRK2-IN-1	CSF1R-autoinhibited	CSF1R	56	10000
LRRK2-IN-1	CSK	CSK	90	10000
LRRK2-IN-1	CSNK1A1	CSNK1A1	100	10000
LRRK2-IN-1	CSNK1A1L	CSNK1A1L	100	10000

LRRK2-IN-1	CSNK1D	CSNK1D	81	10000
LRRK2-IN-1	CSNK1E	CSNK1E	95	10000
LRRK2-IN-1	CSNK1G1	CSNK1G1	100	10000
LRRK2-IN-1	CSNK1G2	CSNK1G2	100	10000
LRRK2-IN-1	CSNK1G3	CSNK1G3	93	10000
LRRK2-IN-1	CSNK2A1	CSNK2A1	100	10000
LRRK2-IN-1	CSNK2A2	CSNK2A2	93	10000
LRRK2-IN-1	CTK	MATK	100	10000
LRRK2-IN-1	DAPK1	DAPK1	73	10000
LRRK2-IN-1	DAPK2	DAPK2	67	10000
LRRK2-IN-1	DAPK3	DAPK3	67	10000
LRRK2-IN-1	DCAMKL1	DCLK1	4.2	10000
LRRK2-IN-1	DCAMKL2	DCLK2	0.45	10000
LRRK2-IN-1	DCAMKL3	DCLK3	90	10000
LRRK2-IN-1	DDR1	DDR1	100	10000
LRRK2-IN-1	DDR2	DDR2	100	10000
LRRK2-IN-1	DLK	MAP3K12	81	10000
LRRK2-IN-1	DMPK	DMPK	100	10000
LRRK2-IN-1	DMPK2	CDC42BPG	100	10000
LRRK2-IN-1	DRAK1	STK17A	100	10000
LRRK2-IN-1	DRAK2	STK17B	93	10000
LRRK2-IN-1	DYRK1A	DYRK1A	99	10000
LRRK2-IN-1	DYRK1B	DYRK1B	94	10000
LRRK2-IN-1	DYRK2	DYRK2	76	10000
LRRK2-IN-1	EGFR	EGFR	84	10000
LRRK2-IN-1	EGFR(E746-A750del)	EGFR	72	10000
LRRK2-IN-1	EGFR(G719C)	EGFR	100	10000
LRRK2-IN-1	EGFR(G719S)	EGFR	86	10000
LRRK2-IN-1	EGFR(L747-E749del, A750P)	EGFR	78	10000
LRRK2-IN-1	EGFR(L747-S752del, P753S)	EGFR	84	10000
LRRK2-IN-1	EGFR(L747-T751del,Sins)	EGFR	100	10000
LRRK2-IN-1	EGFR(L858R)	EGFR	79	10000
LRRK2-IN-1	EGFR(L858R,T790M)	EGFR	84	10000
LRRK2-IN-1	EGFR(L861Q)	EGFR	100	10000
LRRK2-IN-1	EGFR(S752-I759del)	EGFR	99	10000
LRRK2-IN-1	EGFR(T790M)	EGFR	88	10000
LRRK2-IN-1	EIF2AK1	EIF2AK1	100	10000
LRRK2-IN-1	EPHA1	EPHA1	100	10000
LRRK2-IN-1	EPHA2	EPHA2	92	10000
LRRK2-IN-1	EPHA3	EPHA3	100	10000
LRRK2-IN-1	EPHA4	EPHA4	89	10000
LRRK2-IN-1	EPHA5	EPHA5	95	10000
LRRK2-IN-1	EPHA6	EPHA6	89	10000
LRRK2-IN-1	EPHA7	EPHA7	97	10000
LRRK2-IN-1	EPHA8	EPHA8	80	10000
LRRK2-IN-1	EPHB1	EPHB1	98	10000
LRRK2-IN-1	EPHB2	EPHB2	100	10000

LRRK2-IN-1	EPHB3	EPHB3	100	10000
LRRK2-IN-1	EPHB4	EPHB4	100	10000
LRRK2-IN-1	EPHB6	EPHB6	31	10000
LRRK2-IN-1	ERBB2	ERBB2	100	10000
LRRK2-IN-1	ERBB3	ERBB3	100	10000
LRRK2-IN-1	ERBB4	ERBB4	100	10000
LRRK2-IN-1	ERK1	MAPK3	100	10000
LRRK2-IN-1	ERK2	MAPK1	85	10000
LRRK2-IN-1	ERK3	MAPK6	100	10000
LRRK2-IN-1	ERK4	MAPK4	100	10000
LRRK2-IN-1	ERK5	MAPK7	0.05	10000
LRRK2-IN-1	ERK8	MAPK15	100	10000
LRRK2-IN-1	ERN1	ERN1	59	10000
LRRK2-IN-1	FAK	PTK2	34	10000
LRRK2-IN-1	FER	FER	51	10000
LRRK2-IN-1	FES	FES	84	10000
LRRK2-IN-1	FGFR1	FGFR1	86	10000
LRRK2-IN-1	FGFR2	FGFR2	95	10000
LRRK2-IN-1	FGFR3	FGFR3	80	10000
LRRK2-IN-1	FGFR3(G697C)	FGFR3	85	10000
LRRK2-IN-1	FGFR4	FGFR4	28	10000
LRRK2-IN-1	FGR	FGR	84	10000
LRRK2-IN-1	FLT1	FLT1	100	10000
LRRK2-IN-1	FLT3	FLT3	100	10000
LRRK2-IN-1	FLT3	FLT3	100	10000
LRRK2-IN-1	FLT3(D835H)	FLT3	100	10000
LRRK2-IN-1	FLT3(D835Y)	FLT3	100	10000
LRRK2-IN-1	FLT3(ITD)	FLT3	100	10000
LRRK2-IN-1	FLT3(K663Q)	FLT3	97	10000
LRRK2-IN-1	FLT3(N841I)	FLT3	73	10000
LRRK2-IN-1	FLT3(R834Q)	FLT3	100	10000
LRRK2-IN-1	FLT3-autoinhibited	FLT3	100	10000
LRRK2-IN-1	FLT4	FLT4	100	10000
LRRK2-IN-1	FRK	FRK	34	10000
LRRK2-IN-1	FYN	FYN	100	10000
LRRK2-IN-1	GAK	GAK	16	10000
LRRK2-IN-1	GCN2(Kin.Dom.2,S808G)	EIF2AK4	95	10000
LRRK2-IN-1	GRK1	GRK1	91	10000
LRRK2-IN-1	GRK4	GRK4	86	10000
LRRK2-IN-1	GRK7	GRK7	100	10000
LRRK2-IN-1	GSK3A	GSK3A	100	10000
LRRK2-IN-1	GSK3B	GSK3B	88	10000
LRRK2-IN-1	HCK	HCK	100	10000
LRRK2-IN-1	HIPK1	HIPK1	100	10000
LRRK2-IN-1	HIPK2	HIPK2	88	10000
LRRK2-IN-1	HIPK3	HIPK3	89	10000
LRRK2-IN-1	HIPK4	HIPK4	100	10000

LRRK2-IN-1	HPK1	MAP4K1	100	10000
LRRK2-IN-1	HUNK	HUNK	100	10000
LRRK2-IN-1	ICK	ICK	91	10000
LRRK2-IN-1	IGF1R	IGF1R	97	10000
LRRK2-IN-1	IKK-alpha	CHUK	100	10000
LRRK2-IN-1	IKK-beta	IKBKB	89	10000
LRRK2-IN-1	IKK-epsilon	IKBKE	96	10000
LRRK2-IN-1	INSR	INSR	100	10000
LRRK2-IN-1	INSR	INSR	84	10000
LRRK2-IN-1	INSRR	INSRR	97	10000
LRRK2-IN-1	IRAK1	IRAK1	100	10000
LRRK2-IN-1	IRAK3	IRAK3	100	10000
LRRK2-IN-1	IRAK4	IRAK4	83	10000
LRRK2-IN-1	ITK	ITK	82	10000
LRRK2-IN-1	JAK1(JH1domain-catalytic)	JAK1	100	10000
LRRK2-IN-1	JAK1(JH2domain-pseudokinase)	JAK1	92	10000
LRRK2-IN-1	JAK2(JH1domain-catalytic)	JAK2	70	10000
LRRK2-IN-1	JAK3(JH1domain-catalytic)	JAK3	100	10000
LRRK2-IN-1	JNK1	MAPK8	95	10000
LRRK2-IN-1	JNK2	MAPK9	95	10000
LRRK2-IN-1	JNK3	MAPK10	77	10000
LRRK2-IN-1	KIT	KIT	98	10000
LRRK2-IN-1	KIT	KIT	100	10000
LRRK2-IN-1	KIT(A829P)	KIT	100	10000
LRRK2-IN-1	KIT(D816H)	KIT	100	10000
LRRK2-IN-1	KIT(D816V)	KIT	72	10000
LRRK2-IN-1	KIT(L576P)	KIT	100	10000
LRRK2-IN-1	KIT(V559D)	KIT	100	10000
LRRK2-IN-1	KIT(V559D,T670I)	KIT	81	10000
LRRK2-IN-1	KIT(V559D,V654A)	KIT	100	10000
LRRK2-IN-1	KIT-autoinhibited	KIT	100	10000
LRRK2-IN-1	LATS1	LATS1	100	10000
LRRK2-IN-1	LATS2	LATS2	95	10000
LRRK2-IN-1	LCK	LCK	100	10000
LRRK2-IN-1	LIMK1	LIMK1	95	10000
LRRK2-IN-1	LIMK2	LIMK2	100	10000
LRRK2-IN-1	LKB1	STK11	96	10000
LRRK2-IN-1	LOK	STK10	100	10000
LRRK2-IN-1	LRRK2	LRRK2	0	10000
LRRK2-IN-1	LRRK2(G2019S)	LRRK2	5	10000
LRRK2-IN-1	LTK	LTK	32	10000
LRRK2-IN-1	LYN	LYN	100	10000
LRRK2-IN-1	LZK	MAP3K13	100	10000
LRRK2-IN-1	MAK	MAK	72	10000
LRRK2-IN-1	MAP3K1	MAP3K1	95	10000
LRRK2-IN-1	MAP3K15	MAP3K15	69	10000
LRRK2-IN-1	MAP3K2	MAP3K2	97	10000

LRRK2-IN-1	MAP3K3	MAP3K3	97	10000
LRRK2-IN-1	MAP3K4	MAP3K4	100	10000
LRRK2-IN-1	MAP4K2	MAP4K2	100	10000
LRRK2-IN-1	MAP4K3	MAP4K3	71	10000
LRRK2-IN-1	MAP4K4	MAP4K4	85	10000
LRRK2-IN-1	MAP4K5	MAP4K5	100	10000
LRRK2-IN-1	MAPKAPK2	MAPKAPK2	100	10000
LRRK2-IN-1	MAPKAPK5	MAPKAPK5	97	10000
LRRK2-IN-1	MARK1	MARK1	87	10000
LRRK2-IN-1	MARK2	MARK2	100	10000
LRRK2-IN-1	MARK3	MARK3	98	10000
LRRK2-IN-1	MARK4	MARK4	78	10000
LRRK2-IN-1	MAST1	MAST1	100	10000
LRRK2-IN-1	MEK1	MAP2K1	100	10000
LRRK2-IN-1	MEK2	MAP2K2	99	10000
LRRK2-IN-1	MEK3	MAP2K3	75	10000
LRRK2-IN-1	MEK4	MAP2K4	100	10000
LRRK2-IN-1	MEK5	MAP2K5	85	10000
LRRK2-IN-1	MEK6	MAP2K6	83	10000
LRRK2-IN-1	MELK	MELK	100	10000
LRRK2-IN-1	MERTK	MERTK	100	10000
LRRK2-IN-1	MET	MET	100	10000
LRRK2-IN-1	MET(M1250T)	MET	96	10000
LRRK2-IN-1	MET(Y1235D)	MET	100	10000
LRRK2-IN-1	MINK	MINK1	77	10000
LRRK2-IN-1	MKK7	MAP2K7	100	10000
LRRK2-IN-1	MKNK1	MKNK1	50	10000
LRRK2-IN-1	MKNK2	MKNK2	1.3	10000
LRRK2-IN-1	MLCK	MYLK3	100	10000
LRRK2-IN-1	MLK1	MAP3K9	93	10000
LRRK2-IN-1	MLK2	MAP3K10	100	10000
LRRK2-IN-1	MLK3	MAP3K11	100	10000
LRRK2-IN-1	MRCKA	CDC42BPA	100	10000
LRRK2-IN-1	MRCKB	CDC42BPB	100	10000
LRRK2-IN-1	MST1	STK4	100	10000
LRRK2-IN-1	MST1R	MST1R	99	10000
LRRK2-IN-1	MST2	STK3	71	10000
LRRK2-IN-1	MST3	STK24	87	10000
LRRK2-IN-1	MST4	MST4	95	10000
LRRK2-IN-1	MTOR	MTOR	97	10000
LRRK2-IN-1	MUSK	MUSK	99	10000
LRRK2-IN-1	MYLK	MYLK	8.7	10000
LRRK2-IN-1	MYLK2	MYLK2	98	10000
LRRK2-IN-1	MYLK4	MYLK4	80	10000
LRRK2-IN-1	MYO3A	MYO3A	94	10000
LRRK2-IN-1	MYO3B	MYO3B	83	10000
LRRK2-IN-1	NDR1	STK38	96	10000

LRRK2-IN-1	NDR2	STK38L	100	10000
LRRK2-IN-1	NEK1	NEK1	83	10000
LRRK2-IN-1	NEK11	NEK11	100	10000
LRRK2-IN-1	NEK2	NEK2	100	10000
LRRK2-IN-1	NEK3	NEK3	100	10000
LRRK2-IN-1	NEK4	NEK4	95	10000
LRRK2-IN-1	NEK5	NEK5	100	10000
LRRK2-IN-1	NEK6	NEK6	76	10000
LRRK2-IN-1	NEK7	NEK7	100	10000
LRRK2-IN-1	NEK9	NEK9	100	10000
LRRK2-IN-1	NIM1	MGC42105	100	10000
LRRK2-IN-1	NLK	NLK	50	10000
LRRK2-IN-1	OSR1	OXS1	88	10000
LRRK2-IN-1	p38-alpha	MAPK14	87	10000
LRRK2-IN-1	p38-beta	MAPK11	60	10000
LRRK2-IN-1	p38-delta	MAPK13	73	10000
LRRK2-IN-1	p38-gamma	MAPK12	76	10000
LRRK2-IN-1	PAK1	PAK1	95	10000
LRRK2-IN-1	PAK2	PAK2	65	10000
LRRK2-IN-1	PAK3	PAK3	83	10000
LRRK2-IN-1	PAK4	PAK4	94	10000
LRRK2-IN-1	PAK6	PAK6	98	10000
LRRK2-IN-1	PAK7	PAK7	96	10000
LRRK2-IN-1	PCK1	CDK16	96	10000
LRRK2-IN-1	PCK2	CDK17	83	10000
LRRK2-IN-1	PCK3	CDK18	100	10000
LRRK2-IN-1	PDGFRA	PDGFRA	100	10000
LRRK2-IN-1	PDGFRA	PDGFRA	100	10000
LRRK2-IN-1	PDGFRB	PDGFRB	100	10000
LRRK2-IN-1	PDPK1	PDPK1	100	10000
LRRK2-IN-1	PFCDPK1(P.falciparum)	CDPK1	100	10000
LRRK2-IN-1	PFPK5(P.falciparum)	MAL13P1.279	100	10000
LRRK2-IN-1	PFTAIRE2	CDK15	100	10000
LRRK2-IN-1	PFTK1	CDK14	81	10000
LRRK2-IN-1	PHKG1	PHKG1	54	10000
LRRK2-IN-1	PHKG2	PHKG2	33	10000
LRRK2-IN-1	PIK3C2B	PIK3C2B	100	10000
LRRK2-IN-1	PIK3C2G	PIK3C2G	100	10000
LRRK2-IN-1	PIK3CA	PIK3CA	74	10000
LRRK2-IN-1	PIK3CA(C420R)	PIK3CA	89	10000
LRRK2-IN-1	PIK3CA(E542K)	PIK3CA	77	10000
LRRK2-IN-1	PIK3CA(E545A)	PIK3CA	98	10000
LRRK2-IN-1	PIK3CA(E545K)	PIK3CA	100	10000
LRRK2-IN-1	PIK3CA(H1047L)	PIK3CA	20	10000
LRRK2-IN-1	PIK3CA(H1047Y)	PIK3CA	71	10000
LRRK2-IN-1	PIK3CA(I800L)	PIK3CA	38	10000
LRRK2-IN-1	PIK3CA(M1043I)	PIK3CA	65	10000

LRRK2-IN-1	PIK3CA(Q546K)	PIK3CA	91	10000
LRRK2-IN-1	PIK3CB	PIK3CB	96	10000
LRRK2-IN-1	PIK3CD	PIK3CD	62	10000
LRRK2-IN-1	PIK3CG	PIK3CG	15	10000
LRRK2-IN-1	PIK4CB	PI4KB	95	10000
LRRK2-IN-1	PIM1	PIM1	100	10000
LRRK2-IN-1	PIM2	PIM2	100	10000
LRRK2-IN-1	PIM3	PIM3	88	10000
LRRK2-IN-1	PIP5K1A	PIP5K1A	90	10000
LRRK2-IN-1	PIP5K1C	PIP5K1C	96	10000
LRRK2-IN-1	PIP5K2B	PIP4K2B	100	10000
LRRK2-IN-1	PIP5K2C	PIP4K2C	40	10000
LRRK2-IN-1	PKAC-alpha	PRKACA	100	10000
LRRK2-IN-1	PKAC-beta	PRKACB	100	10000
LRRK2-IN-1	PKMYT1	PKMYT1	80	10000
LRRK2-IN-1	PKN1	PKN1	100	10000
LRRK2-IN-1	PKN2	PKN2	95	10000
LRRK2-IN-1	PKNB(M.tuberculosis)	pknB	100	10000
LRRK2-IN-1	PLK1	PLK1	0.7	10000
LRRK2-IN-1	PLK2	PLK2	100	10000
LRRK2-IN-1	PLK3	PLK3	51	10000
LRRK2-IN-1	PLK4	PLK4	0	10000
LRRK2-IN-1	PRKCD	PRKCD	75	10000
LRRK2-IN-1	PRKCE	PRKCE	100	10000
LRRK2-IN-1	PRKCH	PRKCH	100	10000
LRRK2-IN-1	PRKCI	PRKCI	100	10000
LRRK2-IN-1	PRKCQ	PRKCQ	100	10000
LRRK2-IN-1	PRKD1	PRKD1	28	10000
LRRK2-IN-1	PRKD2	PRKD2	59	10000
LRRK2-IN-1	PRKD3	PRKD3	42	10000
LRRK2-IN-1	PRKG1	PRKG1	98	10000
LRRK2-IN-1	PRKG2	PRKG2	74	10000
LRRK2-IN-1	PRKR	EIF2AK2	84	10000
LRRK2-IN-1	PRKX	PRKX	99	10000
LRRK2-IN-1	PRP4	PRPF4B	93	10000
LRRK2-IN-1	PYK2	PTK2B	78	10000
LRRK2-IN-1	QSK	KIAA0999	100	10000
LRRK2-IN-1	RAF1	RAF1	100	10000
LRRK2-IN-1	RET	RET	100	10000
LRRK2-IN-1	RET(M918T)	RET	100	10000
LRRK2-IN-1	RET(V804L)	RET	89	10000
LRRK2-IN-1	RET(V804M)	RET	80	10000
LRRK2-IN-1	RIOK1	RIOK1	100	10000
LRRK2-IN-1	RIOK2	RIOK2	100	10000
LRRK2-IN-1	RIOK3	RIOK3	85	10000
LRRK2-IN-1	RIPK1	RIPK1	99	10000
LRRK2-IN-1	RIPK2	RIPK2	100	10000

LRRK2-IN-1	RIPK4	RIPK4	75	10000
LRRK2-IN-1	RIPK5	DSTYK	16	10000
LRRK2-IN-1	ROCK1	ROCK1	100	10000
LRRK2-IN-1	ROCK2	ROCK2	87	10000
LRRK2-IN-1	ROS1	ROS1	12	10000
LRRK2-IN-1	RPS6KA4(Kin.Dom.1-N-terminal)	RPS6KA4	100	10000
LRRK2-IN-1	RPS6KA4(Kin.Dom.2-C-terminal)	RPS6KA4	46	10000
LRRK2-IN-1	RPS6KA5(Kin.Dom.1-N-terminal)	RPS6KA5	96	10000
LRRK2-IN-1	RPS6KA5(Kin.Dom.2-C-terminal)	RPS6KA5	92	10000
LRRK2-IN-1	RSK1(Kin.Dom.1-N-terminal)	RPS6KA1	73	10000
LRRK2-IN-1	RSK1(Kin.Dom.2-C-terminal)	RPS6KA1	10	10000
LRRK2-IN-1	RSK2(Kin.Dom.1-N-terminal)	RPS6KA3	77	10000
LRRK2-IN-1	RSK3(Kin.Dom.1-N-terminal)	RPS6KA2	83	10000
LRRK2-IN-1	RSK3(Kin.Dom.2-C-terminal)	RPS6KA2	7.5	10000
LRRK2-IN-1	RSK4(Kin.Dom.1-N-terminal)	RPS6KA6	92	10000
LRRK2-IN-1	RSK4(Kin.Dom.2-C-terminal)	RPS6KA6	2.2	10000
LRRK2-IN-1	S6K1	RPS6KB1	100	10000
LRRK2-IN-1	SBK1	SBK1	100	10000
LRRK2-IN-1	SgK110	SgK110	62	10000
LRRK2-IN-1	SGK3	SGK3	95	10000
LRRK2-IN-1	SIK	SIK1	77	10000
LRRK2-IN-1	SIK2	SIK2	98	10000
LRRK2-IN-1	SLK	SLK	100	10000
LRRK2-IN-1	SNARK	NUAK2	47	10000
LRRK2-IN-1	SNRK	SNRK	94	10000
LRRK2-IN-1	SRC	SRC	100	10000
LRRK2-IN-1	SRMS	SRMS	77	10000
LRRK2-IN-1	SRPK1	SRPK1	94	10000
LRRK2-IN-1	SRPK2	SRPK2	100	10000
LRRK2-IN-1	SRPK3	SRPK3	72	10000
LRRK2-IN-1	STK16	STK16	62	10000
LRRK2-IN-1	STK33	STK33	10	10000
LRRK2-IN-1	STK35	STK35	100	10000
LRRK2-IN-1	STK36	STK36	97	10000
LRRK2-IN-1	STK39	STK39	39	10000
LRRK2-IN-1	SYK	SYK	100	10000
LRRK2-IN-1	TAK1	MAP3K7	98	10000
LRRK2-IN-1	TAOK1	TAOK1	28	10000
LRRK2-IN-1	TAOK2	TAOK2	65	10000
LRRK2-IN-1	TAOK3	TAOK3	24	10000
LRRK2-IN-1	TBK1	TBK1	97	10000
LRRK2-IN-1	TEC	TEC	100	10000
LRRK2-IN-1	TESK1	TESK1	82	10000
LRRK2-IN-1	TGFBR1	TGFBR1	100	10000
LRRK2-IN-1	TGFBR2	TGFBR2	100	10000
LRRK2-IN-1	TIE1	TIE1	100	10000
LRRK2-IN-1	TIE2	TEK	100	10000

LRRK2-IN-1	TLK1	TLK1	100	10000
LRRK2-IN-1	TLK2	TLK2	99	10000
LRRK2-IN-1	TNIK	TNIK	100	10000
LRRK2-IN-1	TNK1	TNK1	2.8	10000
LRRK2-IN-1	TNK2	TNK2	18	10000
LRRK2-IN-1	TNNI3K	TNNI3K	100	10000
LRRK2-IN-1	TRKA	NTRK1	69	10000
LRRK2-IN-1	TRKB	NTRK2	100	10000
LRRK2-IN-1	TRKC	NTRK3	100	10000
LRRK2-IN-1	TRPM6	TRPM6	100	10000
LRRK2-IN-1	TSSK1B	TSSK1B	60	10000
LRRK2-IN-1	TTK	TTK	28	10000
LRRK2-IN-1	TXK	TXK	91	10000
LRRK2-IN-1	TYK2(JH1domain-catalytic)	TYK2	52	10000
LRRK2-IN-1	TYK2(JH2domain-pseudokinase)	TYK2	100	10000
LRRK2-IN-1	TYRO3	TYRO3	100	10000
LRRK2-IN-1	ULK1	ULK1	81	10000
LRRK2-IN-1	ULK2	ULK2	67	10000
LRRK2-IN-1	ULK3	ULK3	100	10000
LRRK2-IN-1	VEGFR2	KDR	100	10000
LRRK2-IN-1	VEGFR2	KDR	84	10000
LRRK2-IN-1	VRK2	VRK2	99	10000
LRRK2-IN-1	WEE1	WEE1	100	10000
LRRK2-IN-1	WEE2	WEE2	100	10000
LRRK2-IN-1	YANK1	STK32A	100	10000
LRRK2-IN-1	YANK2	STK32B	100	10000
LRRK2-IN-1	YANK3	STK32C	100	10000
LRRK2-IN-1	YES	YES1	100	10000
LRRK2-IN-1	YSK1	STK25	68	10000
LRRK2-IN-1	YSK4	MAP3K19	99	10000
LRRK2-IN-1	ZAK	ZAK	99	10000
LRRK2-IN-1	ZAP70	ZAP70	79	10000