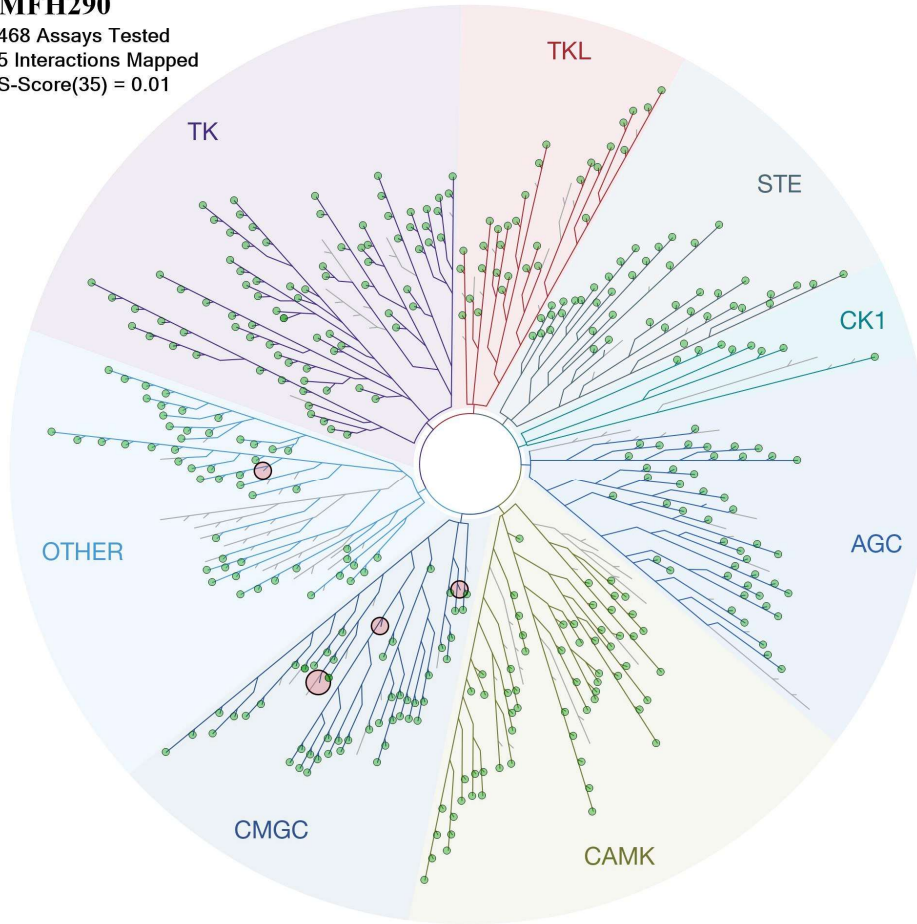


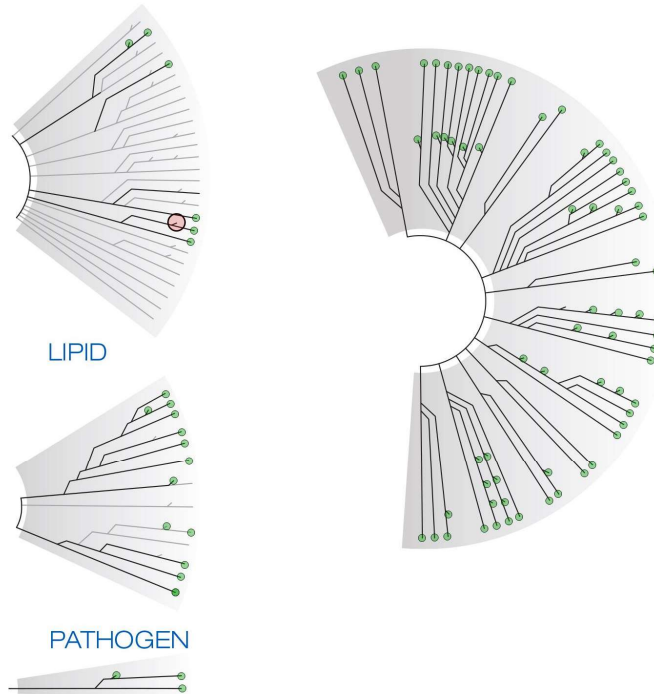
MFH290

468 Assays Tested
5 Interactions Mapped
S-Score(35) = 0.01



ATYPICAL

MUTANT



Compound Name	DiscoverX Gene Symbol	Entrez Gene Symbol	Percent Control	Compound Concentration (nM)
MFH290	AAK1	AAK1	95	1000
MFH290	ABL1(E255K)-phosphorylated	ABL1	100	1000
MFH290	ABL1(F317I)-nonphosphorylated	ABL1	100	1000
MFH290	ABL1(F317I)-phosphorylated	ABL1	100	1000
MFH290	ABL1(F317L)-nonphosphorylated	ABL1	100	1000
MFH290	ABL1(F317L)-phosphorylated	ABL1	93	1000
MFH290	ABL1(H396P)-nonphosphorylated	ABL1	100	1000
MFH290	ABL1(H396P)-phosphorylated	ABL1	94	1000
MFH290	ABL1(M351T)-phosphorylated	ABL1	100	1000
MFH290	ABL1(Q252H)-nonphosphorylated	ABL1	98	1000
MFH290	ABL1(Q252H)-phosphorylated	ABL1	89	1000
MFH290	ABL1(T315I)-nonphosphorylated	ABL1	93	1000
MFH290	ABL1(T315I)-phosphorylated	ABL1	87	1000
MFH290	ABL1(Y253F)-phosphorylated	ABL1	96	1000
MFH290	ABL1-nonphosphorylated	ABL1	87	1000
MFH290	ABL1-phosphorylated	ABL1	94	1000
MFH290	ABL2	ABL2	97	1000
MFH290	ACVR1	ACVR1	100	1000
MFH290	ACVR1B	ACVR1B	84	1000
MFH290	ACVR2A	ACVR2A	99	1000
MFH290	ACVR2B	ACVR2B	100	1000
MFH290	ACVRL1	ACVRL1	81	1000
MFH290	ADCK3	CABC1	100	1000
MFH290	ADCK4	ADCK4	100	1000
MFH290	AKT1	AKT1	100	1000
MFH290	AKT2	AKT2	78	1000
MFH290	AKT3	AKT3	100	1000
MFH290	ALK	ALK	81	1000
MFH290	ALK(C1156Y)	ALK	95	1000
MFH290	ALK(L1196M)	ALK	100	1000
MFH290	AMPK-alpha1	PRKAA1	100	1000
MFH290	AMPK-alpha2	PRKAA2	87	1000
MFH290	ANKK1	ANKK1	94	1000
MFH290	ARK5	NUAK1	96	1000
MFH290	ASK1	MAP3K5	100	1000
MFH290	ASK2	MAP3K6	100	1000
MFH290	AURKA	AURKA	84	1000
MFH290	AURKB	AURKB	91	1000
MFH290	AURKC	AURKC	100	1000
MFH290	AXL	AXL	96	1000
MFH290	BIKE	BMP2K	100	1000
MFH290	BLK	BLK	100	1000
MFH290	BMPR1A	BMPR1A	91	1000
MFH290	BMPR1B	BMPR1B	100	1000
MFH290	BMPR2	BMPR2	90	1000

MFH290	BMX	BMX	100	1000
MFH290	BRAF	BRAF	94	1000
MFH290	BRAF(V600E)	BRAF	90	1000
MFH290	BRK	PTK6	100	1000
MFH290	BRSK1	BRSK1	97	1000
MFH290	BRSK2	BRSK2	87	1000
MFH290	BTK	BTK	100	1000
MFH290	BUB1	BUB1	100	1000
MFH290	CAMK1	CAMK1	88	1000
MFH290	CAMK1B	PNCK	98	1000
MFH290	CAMK1D	CAMK1D	96	1000
MFH290	CAMK1G	CAMK1G	99	1000
MFH290	CAMK2A	CAMK2A	94	1000
MFH290	CAMK2B	CAMK2B	91	1000
MFH290	CAMK2D	CAMK2D	93	1000
MFH290	CAMK2G	CAMK2G	100	1000
MFH290	CAMK4	CAMK4	94	1000
MFH290	CAMKK1	CAMKK1	87	1000
MFH290	CAMKK2	CAMKK2	80	1000
MFH290	CASK	CASK	78	1000
MFH290	CDC2L1	CDK11B	100	1000
MFH290	CDC2L2	CDC2L2	77	1000
MFH290	CDC2L5	CDK13	5	1000
MFH290	CDK11	CDK19	100	1000
MFH290	CDK2	CDK2	57	1000
MFH290	CDK3	CDK3	97	1000
MFH290	CDK4	CDK4	98	1000
MFH290	CDK4-cyclinD1	CDK4	94	1000
MFH290	CDK4-cyclinD3	CDK4	93	1000
MFH290	CDK5	CDK5	68	1000
MFH290	CDK7	CDK7	85	1000
MFH290	CDK8	CDK8	100	1000
MFH290	CDK9	CDK9	75	1000
MFH290	CDKL1	CDKL1	81	1000
MFH290	CDKL2	CDKL2	73	1000
MFH290	CDKL3	CDKL3	75	1000
MFH290	CDKL5	CDKL5	100	1000
MFH290	CHEK1	CHEK1	99	1000
MFH290	CHEK2	CHEK2	96	1000
MFH290	CIT	CIT	87	1000
MFH290	CLK1	CLK1	91	1000
MFH290	CLK2	CLK2	82	1000
MFH290	CLK3	CLK3	94	1000
MFH290	CLK4	CLK4	93	1000
MFH290	CSF1R	CSF1R	76	1000
MFH290	CSF1R-autoinhibited	CSF1R	100	1000
MFH290	CSK	CSK	99	1000

MFH290	CSNK1A1	CSNK1A1	89	1000
MFH290	CSNK1A1L	CSNK1A1L	94	1000
MFH290	CSNK1D	CSNK1D	93	1000
MFH290	CSNK1E	CSNK1E	87	1000
MFH290	CSNK1G1	CSNK1G1	100	1000
MFH290	CSNK1G2	CSNK1G2	100	1000
MFH290	CSNK1G3	CSNK1G3	96	1000
MFH290	CSNK2A1	CSNK2A1	100	1000
MFH290	CSNK2A2	CSNK2A2	94	1000
MFH290	CTK	MATK	100	1000
MFH290	DAPK1	DAPK1	100	1000
MFH290	DAPK2	DAPK2	99	1000
MFH290	DAPK3	DAPK3	96	1000
MFH290	DCAMKL1	DCLK1	77	1000
MFH290	DCAMKL2	DCLK2	82	1000
MFH290	DCAMKL3	DCLK3	73	1000
MFH290	DDR1	DDR1	100	1000
MFH290	DDR2	DDR2	100	1000
MFH290	DLK	MAP3K12	94	1000
MFH290	DMPK	DMPK	100	1000
MFH290	DMPK2	CDC42BPG	100	1000
MFH290	DRAK1	STK17A	76	1000
MFH290	DRAK2	STK17B	88	1000
MFH290	DYRK1A	DYRK1A	98	1000
MFH290	DYRK1B	DYRK1B	83	1000
MFH290	DYRK2	DYRK2	96	1000
MFH290	EGFR	EGFR	86	1000
MFH290	EGFR(E746-A750del)	EGFR	83	1000
MFH290	EGFR(G719C)	EGFR	76	1000
MFH290	EGFR(G719S)	EGFR	69	1000
MFH290	EGFR(L747-E749del, A750P)	EGFR	90	1000
MFH290	EGFR(L747-S752del, P753S)	EGFR	92	1000
MFH290	EGFR(L747-T751del,Sins)	EGFR	60	1000
MFH290	EGFR(L858R)	EGFR	65	1000
MFH290	EGFR(L858R,T790M)	EGFR	96	1000
MFH290	EGFR(L861Q)	EGFR	83	1000
MFH290	EGFR(S752-I759del)	EGFR	89	1000
MFH290	EGFR(T790M)	EGFR	99	1000
MFH290	EIF2AK1	EIF2AK1	100	1000
MFH290	EPHA1	EPHA1	96	1000
MFH290	EPHA2	EPHA2	100	1000
MFH290	EPHA3	EPHA3	100	1000
MFH290	EPHA4	EPHA4	100	1000
MFH290	EPHA5	EPHA5	99	1000
MFH290	EPHA6	EPHA6	100	1000
MFH290	EPHA7	EPHA7	100	1000
MFH290	EPHA8	EPHA8	100	1000

MFH290	EPHB1	EPHB1	90	1000
MFH290	EPHB2	EPHB2	100	1000
MFH290	EPHB3	EPHB3	97	1000
MFH290	EPHB4	EPHB4	100	1000
MFH290	EPHB6	EPHB6	100	1000
MFH290	ERBB2	ERBB2	83	1000
MFH290	ERBB3	ERBB3	98	1000
MFH290	ERBB4	ERBB4	97	1000
MFH290	ERK1	MAPK3	98	1000
MFH290	ERK2	MAPK1	99	1000
MFH290	ERK3	MAPK6	97	1000
MFH290	ERK4	MAPK4	99	1000
MFH290	ERK5	MAPK7	97	1000
MFH290	ERK8	MAPK15	21	1000
MFH290	ERN1	ERN1	87	1000
MFH290	FAK	PTK2	100	1000
MFH290	FER	FER	97	1000
MFH290	FES	FES	100	1000
MFH290	FGFR1	FGFR1	91	1000
MFH290	FGFR2	FGFR2	98	1000
MFH290	FGFR3	FGFR3	100	1000
MFH290	FGFR3(G697C)	FGFR3	94	1000
MFH290	FGFR4	FGFR4	100	1000
MFH290	FGR	FGR	100	1000
MFH290	FLT1	FLT1	99	1000
MFH290	FLT3	FLT3	77	1000
MFH290	FLT3(D835H)	FLT3	99	1000
MFH290	FLT3(D835V)	FLT3	72	1000
MFH290	FLT3(D835Y)	FLT3	98	1000
MFH290	FLT3(ITD)	FLT3	100	1000
MFH290	FLT3(ITD,D835V)	FLT3	86	1000
MFH290	FLT3(ITD,F691L)	FLT3	84	1000
MFH290	FLT3(K663Q)	FLT3	98	1000
MFH290	FLT3(N841I)	FLT3	100	1000
MFH290	FLT3(R834Q)	FLT3	84	1000
MFH290	FLT3-autoinhibited	FLT3	91	1000
MFH290	FLT4	FLT4	92	1000
MFH290	FRK	FRK	100	1000
MFH290	FYN	FYN	91	1000
MFH290	GAK	GAK	96	1000
MFH290	GCN2(Kin.Dom.2,S808G)	EIF2AK4	100	1000
MFH290	GRK1	GRK1	99	1000
MFH290	GRK2	ADRBK1	100	1000
MFH290	GRK3	ADRBK2	100	1000
MFH290	GRK4	GRK4	100	1000
MFH290	GRK7	GRK7	100	1000
MFH290	GSK3A	GSK3A	22	1000

MFH290	GSK3B	GSK3B	55	1000
MFH290	HASPIN	GSG2	73	1000
MFH290	HCK	HCK	98	1000
MFH290	HIPK1	HIPK1	82	1000
MFH290	HIPK2	HIPK2	82	1000
MFH290	HIPK3	HIPK3	80	1000
MFH290	HIPK4	HIPK4	98	1000
MFH290	HPK1	MAP4K1	100	1000
MFH290	HUNK	HUNK	94	1000
MFH290	ICK	ICK	73	1000
MFH290	IGF1R	IGF1R	96	1000
MFH290	IKK-alpha	CHUK	100	1000
MFH290	IKK-beta	IKBKB	100	1000
MFH290	IKK-epsilon	IKBKE	100	1000
MFH290	INSR	INSR	97	1000
MFH290	INSRR	INSRR	100	1000
MFH290	IRAK1	IRAK1	100	1000
MFH290	IRAK3	IRAK3	90	1000
MFH290	IRAK4	IRAK4	100	1000
MFH290	ITK	ITK	92	1000
MFH290	JAK1(JH1domain-catalytic)	JAK1	100	1000
MFH290	JAK1(JH2domain-pseudokinase)	JAK1	56	1000
MFH290	JAK2(JH1domain-catalytic)	JAK2	100	1000
MFH290	JAK3(JH1domain-catalytic)	JAK3	100	1000
MFH290	JNK1	MAPK8	71	1000
MFH290	JNK2	MAPK9	83	1000
MFH290	JNK3	MAPK10	92	1000
MFH290	KIT	KIT	100	1000
MFH290	KIT(A829P)	KIT	100	1000
MFH290	KIT(D816H)	KIT	100	1000
MFH290	KIT(D816V)	KIT	100	1000
MFH290	KIT(L576P)	KIT	98	1000
MFH290	KIT(V559D)	KIT	99	1000
MFH290	KIT(V559D,T670I)	KIT	91	1000
MFH290	KIT(V559D,V654A)	KIT	90	1000
MFH290	KIT-autoinhibited	KIT	100	1000
MFH290	LATS1	LATS1	99	1000
MFH290	LATS2	LATS2	97	1000
MFH290	LCK	LCK	94	1000
MFH290	LIMK1	LIMK1	99	1000
MFH290	LIMK2	LIMK2	100	1000
MFH290	LKB1	STK11	100	1000
MFH290	LOK	STK10	98	1000
MFH290	LRRK2	LRRK2	92	1000
MFH290	LRRK2(G2019S)	LRRK2	100	1000
MFH290	LTK	LTK	85	1000
MFH290	LYN	LYN	87	1000

MFH290	LZK	MAP3K13	100	1000
MFH290	MAK	MAK	92	1000
MFH290	MAP3K1	MAP3K1	87	1000
MFH290	MAP3K15	MAP3K15	100	1000
MFH290	MAP3K2	MAP3K2	83	1000
MFH290	MAP3K3	MAP3K3	94	1000
MFH290	MAP3K4	MAP3K4	91	1000
MFH290	MAP4K2	MAP4K2	100	1000
MFH290	MAP4K3	MAP4K3	100	1000
MFH290	MAP4K4	MAP4K4	100	1000
MFH290	MAP4K5	MAP4K5	100	1000
MFH290	MAPKAPK2	MAPKAPK2	92	1000
MFH290	MAPKAPK5	MAPKAPK5	100	1000
MFH290	MARK1	MARK1	91	1000
MFH290	MARK2	MARK2	100	1000
MFH290	MARK3	MARK3	81	1000
MFH290	MARK4	MARK4	93	1000
MFH290	MAST1	MAST1	80	1000
MFH290	MEK1	MAP2K1	99	1000
MFH290	MEK2	MAP2K2	98	1000
MFH290	MEK3	MAP2K3	79	1000
MFH290	MEK4	MAP2K4	88	1000
MFH290	MEK5	MAP2K5	78	1000
MFH290	MEK6	MAP2K6	100	1000
MFH290	MELK	MELK	100	1000
MFH290	MERTK	MERTK	95	1000
MFH290	MET	MET	100	1000
MFH290	MET(M1250T)	MET	100	1000
MFH290	MET(Y1235D)	MET	83	1000
MFH290	MINK	MINK1	98	1000
MFH290	MKK7	MAP2K7	91	1000
MFH290	MKNK1	MKNK1	100	1000
MFH290	MKNK2	MKNK2	91	1000
MFH290	MLCK	MYLK3	100	1000
MFH290	MLK1	MAP3K9	100	1000
MFH290	MLK2	MAP3K10	100	1000
MFH290	MLK3	MAP3K11	93	1000
MFH290	MRCKA	CDC42BPA	100	1000
MFH290	MRCKB	CDC42BPB	100	1000
MFH290	MST1	STK4	91	1000
MFH290	MST1R	MST1R	95	1000
MFH290	MST2	STK3	93	1000
MFH290	MST3	STK24	98	1000
MFH290	MST4	MST4	100	1000
MFH290	MTOR	MTOR	100	1000
MFH290	MUSK	MUSK	98	1000
MFH290	MYLK	MYLK	72	1000

MFH290	MYLK2	MYLK2	95	1000
MFH290	MYLK4	MYLK4	92	1000
MFH290	MYO3A	MYO3A	99	1000
MFH290	MYO3B	MYO3B	96	1000
MFH290	NDR1	STK38	95	1000
MFH290	NDR2	STK38L	99	1000
MFH290	NEK1	NEK1	97	1000
MFH290	NEK10	NEK10	100	1000
MFH290	NEK11	NEK11	100	1000
MFH290	NEK2	NEK2	100	1000
MFH290	NEK3	NEK3	79	1000
MFH290	NEK4	NEK4	94	1000
MFH290	NEK5	NEK5	100	1000
MFH290	NEK6	NEK6	100	1000
MFH290	NEK7	NEK7	92	1000
MFH290	NEK9	NEK9	94	1000
MFH290	NIK	MAP3K14	72	1000
MFH290	NIM1	MGC42105	100	1000
MFH290	NLK	NLK	84	1000
MFH290	OSR1	OXR1	99	1000
MFH290	p38-alpha	MAPK14	96	1000
MFH290	p38-beta	MAPK11	92	1000
MFH290	p38-delta	MAPK13	86	1000
MFH290	p38-gamma	MAPK12	93	1000
MFH290	PAK1	PAK1	100	1000
MFH290	PAK2	PAK2	100	1000
MFH290	PAK3	PAK3	100	1000
MFH290	PAK4	PAK4	92	1000
MFH290	PAK6	PAK6	89	1000
MFH290	PAK7	PAK7	100	1000
MFH290	PCTK1	CDK16	100	1000
MFH290	PCTK2	CDK17	97	1000
MFH290	PCTK3	CDK18	98	1000
MFH290	PDGFRA	PDGFRA	99	1000
MFH290	PDGFRB	PDGFRB	99	1000
MFH290	PDPK1	PDPK1	96	1000
MFH290	PFCDPK1(P.falciparum)	CDPK1	79	1000
MFH290	PFPK5(P.falciparum)	MAL13P1.279	100	1000
MFH290	PFTAIRE2	CDK15	96	1000
MFH290	PFTK1	CDK14	89	1000
MFH290	PHKG1	PHKG1	100	1000
MFH290	PHKG2	PHKG2	94	1000
MFH290	PIK3C2B	PIK3C2B	100	1000
MFH290	PIK3C2G	PIK3C2G	100	1000
MFH290	PIK3CA	PIK3CA	100	1000
MFH290	PIK3CA(C420R)	PIK3CA	94	1000
MFH290	PIK3CA(E542K)	PIK3CA	97	1000

MFH290	PIK3CA(E545A)	PIK3CA	100	1000
MFH290	PIK3CA(E545K)	PIK3CA	100	1000
MFH290	PIK3CA(H1047L)	PIK3CA	74	1000
MFH290	PIK3CA(H1047Y)	PIK3CA	100	1000
MFH290	PIK3CA(I800L)	PIK3CA	88	1000
MFH290	PIK3CA(M1043I)	PIK3CA	100	1000
MFH290	PIK3CA(Q546K)	PIK3CA	86	1000
MFH290	PIK3CB	PIK3CB	75	1000
MFH290	PIK3CD	PIK3CD	100	1000
MFH290	PIK3CG	PIK3CG	85	1000
MFH290	PIK4CB	PI4KB	100	1000
MFH290	PIKFYVE	PIKFYVE	74	1000
MFH290	PIM1	PIM1	98	1000
MFH290	PIM2	PIM2	100	1000
MFH290	PIM3	PIM3	99	1000
MFH290	PIP5K1A	PIP5K1A	84	1000
MFH290	PIP5K1C	PIP5K1C	85	1000
MFH290	PIP5K2B	PIP4K2B	100	1000
MFH290	PIP5K2C	PIP4K2C	82	1000
MFH290	PKAC-alpha	PRKACA	92	1000
MFH290	PKAC-beta	PRKACB	100	1000
MFH290	PKMYT1	PKMYT1	92	1000
MFH290	PKN1	PKN1	61	1000
MFH290	PKN2	PKN2	91	1000
MFH290	PKNB(M.tuberculosis)	pknB	100	1000
MFH290	PLK1	PLK1	100	1000
MFH290	PLK2	PLK2	100	1000
MFH290	PLK3	PLK3	88	1000
MFH290	PLK4	PLK4	84	1000
MFH290	PRKCD	PRKCD	81	1000
MFH290	PRKCE	PRKCE	91	1000
MFH290	PRKCH	PRKCH	100	1000
MFH290	PRKCI	PRKCI	92	1000
MFH290	PRKCQ	PRKCQ	70	1000
MFH290	PRKD1	PRKD1	80	1000
MFH290	PRKD2	PRKD2	100	1000
MFH290	PRKD3	PRKD3	100	1000
MFH290	PRKG1	PRKG1	99	1000
MFH290	PRKG2	PRKG2	86	1000
MFH290	PRKR	EIF2AK2	64	1000
MFH290	PRKX	PRKX	97	1000
MFH290	PRP4	PRPF4B	96	1000
MFH290	PYK2	PTK2B	100	1000
MFH290	QSK	KIAA0999	100	1000
MFH290	RAF1	RAF1	100	1000
MFH290	RET	RET	100	1000
MFH290	RET(M918T)	RET	96	1000

MFH290	RET(V804L)	RET	92	1000
MFH290	RET(V804M)	RET	100	1000
MFH290	RIOK1	RIOK1	98	1000
MFH290	RIOK2	RIOK2	24	1000
MFH290	RIOK3	RIOK3	100	1000
MFH290	RIPK1	RIPK1	100	1000
MFH290	RIPK2	RIPK2	89	1000
MFH290	RIPK4	RIPK4	100	1000
MFH290	RIPK5	DSTYK	100	1000
MFH290	ROCK1	ROCK1	95	1000
MFH290	ROCK2	ROCK2	84	1000
MFH290	ROS1	ROS1	99	1000
MFH290	RPS6KA4(Kin.Dom.1-N-terminal)	RPS6KA4	100	1000
MFH290	RPS6KA4(Kin.Dom.2-C-terminal)	RPS6KA4	100	1000
MFH290	RPS6KA5(Kin.Dom.1-N-terminal)	RPS6KA5	93	1000
MFH290	RPS6KA5(Kin.Dom.2-C-terminal)	RPS6KA5	100	1000
MFH290	RSK1(Kin.Dom.1-N-terminal)	RPS6KA1	100	1000
MFH290	RSK1(Kin.Dom.2-C-terminal)	RPS6KA1	100	1000
MFH290	RSK2(Kin.Dom.1-N-terminal)	RPS6KA3	76	1000
MFH290	RSK2(Kin.Dom.2-C-terminal)	RPS6KA3	97	1000
MFH290	RSK3(Kin.Dom.1-N-terminal)	RPS6KA2	77	1000
MFH290	RSK3(Kin.Dom.2-C-terminal)	RPS6KA2	100	1000
MFH290	RSK4(Kin.Dom.1-N-terminal)	RPS6KA6	59	1000
MFH290	RSK4(Kin.Dom.2-C-terminal)	RPS6KA6	100	1000
MFH290	S6K1	RPS6KB1	100	1000
MFH290	SBK1	SBK1	85	1000
MFH290	SGK	SGK1	95	1000
MFH290	SgK110	SgK110	90	1000
MFH290	SGK2	SGK2	100	1000
MFH290	SGK3	SGK3	91	1000
MFH290	SIK	SIK1	96	1000
MFH290	SIK2	SIK2	100	1000
MFH290	SLK	SLK	96	1000
MFH290	SNARK	NUAK2	87	1000
MFH290	SNRK	SNRK	100	1000
MFH290	SRC	SRC	90	1000
MFH290	SRMS	SRMS	100	1000
MFH290	SRPK1	SRPK1	85	1000
MFH290	SRPK2	SRPK2	62	1000
MFH290	SRPK3	SRPK3	94	1000
MFH290	STK16	STK16	27	1000
MFH290	STK33	STK33	100	1000
MFH290	STK35	STK35	100	1000
MFH290	STK36	STK36	100	1000
MFH290	STK39	STK39	100	1000
MFH290	SYK	SYK	100	1000
MFH290	TAK1	MAP3K7	100	1000

MFH290	TAOK1	TAOK1	100	1000
MFH290	TAOK2	TAOK2	100	1000
MFH290	TAOK3	TAOK3	100	1000
MFH290	TBK1	TBK1	60	1000
MFH290	TEC	TEC	97	1000
MFH290	TESK1	TESK1	96	1000
MFH290	TGFBR1	TGFBR1	100	1000
MFH290	TGFBR2	TGFBR2	66	1000
MFH290	TIE1	TIE1	92	1000
MFH290	TIE2	TEK	91	1000
MFH290	TLK1	TLK1	100	1000
MFH290	TLK2	TLK2	92	1000
MFH290	TNIK	TNIK	100	1000
MFH290	TNK1	TNK1	99	1000
MFH290	TNK2	TNK2	100	1000
MFH290	TNNI3K	TNNI3K	99	1000
MFH290	TRKA	NTRK1	97	1000
MFH290	TRKB	NTRK2	100	1000
MFH290	TRKC	NTRK3	100	1000
MFH290	TRPM6	TRPM6	79	1000
MFH290	TSSK1B	TSSK1B	91	1000
MFH290	TSSK3	TSSK3	81	1000
MFH290	TTK	TTK	87	1000
MFH290	TXK	TXK	98	1000
MFH290	TYK2(JH1domain-catalytic)	TYK2	88	1000
MFH290	TYK2(JH2domain-pseudokinase)	TYK2	99	1000
MFH290	TYRO3	TYRO3	95	1000
MFH290	ULK1	ULK1	87	1000
MFH290	ULK2	ULK2	100	1000
MFH290	ULK3	ULK3	98	1000
MFH290	VEGFR2	KDR	83	1000
MFH290	VPS34	PIK3C3	91	1000
MFH290	VRK2	VRK2	100	1000
MFH290	WEE1	WEE1	100	1000
MFH290	WEE2	WEE2	92	1000
MFH290	WNK1	WNK1	94	1000
MFH290	WNK2	WNK2	100	1000
MFH290	WNK3	WNK3	95	1000
MFH290	WNK4	WNK4	100	1000
MFH290	YANK1	STK32A	100	1000
MFH290	YANK2	STK32B	98	1000
MFH290	YANK3	STK32C	76	1000
MFH290	YES	YES1	100	1000
MFH290	YSK1	STK25	94	1000
MFH290	YSK4	MAP3K19	58	1000
MFH290	ZAK	ZAK	100	1000
MFH290	ZAP70	ZAP70	100	1000