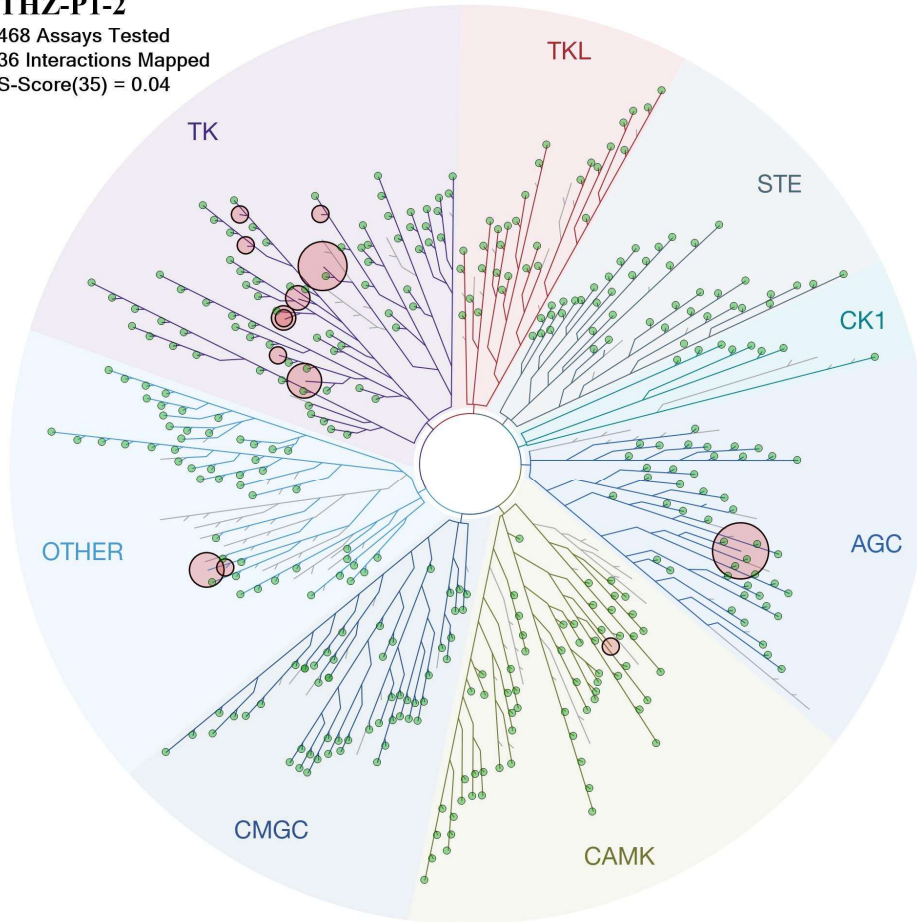


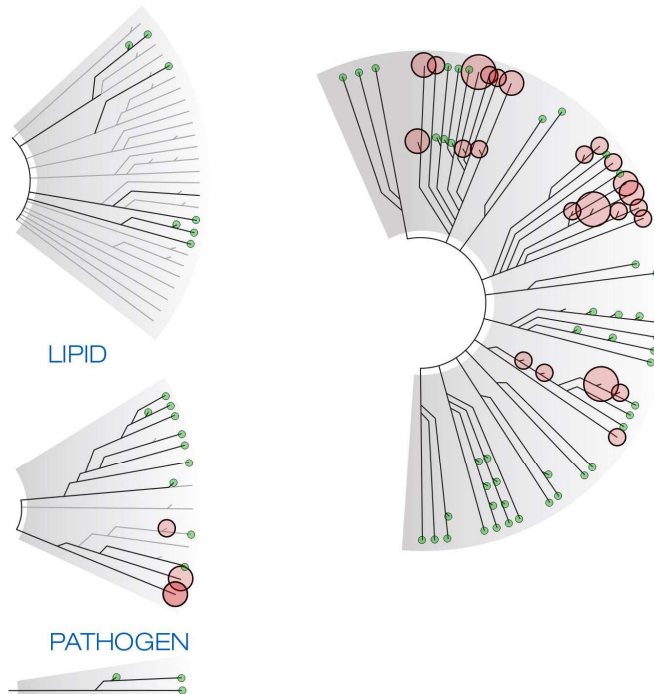
THZ-P1-2

468 Assays Tested
36 Interactions Mapped
S-Score(35) = 0.04



ATYPICAL

MUTANT



Compound Name	DiscoverX Gene Symbol	Entrez Gene Symbol	Percent Control	Compound Concentration (nM)
THZ-P1-2	AAK1	AAK1	100	1000
THZ-P1-2	ABL1(E255K)-phosphorylated	ABL1	21	1000
THZ-P1-2	ABL1(F317I)-nonphosphorylated	ABL1	93	1000
THZ-P1-2	ABL1(F317I)-phosphorylated	ABL1	100	1000
THZ-P1-2	ABL1(F317L)-nonphosphorylated	ABL1	71	1000
THZ-P1-2	ABL1(F317L)-phosphorylated	ABL1	44	1000
THZ-P1-2	ABL1(H396P)-nonphosphorylated	ABL1	5.8	1000
THZ-P1-2	ABL1(H396P)-phosphorylated	ABL1	6.6	1000
THZ-P1-2	ABL1(M351T)-phosphorylated	ABL1	12	1000
THZ-P1-2	ABL1(Q252H)-nonphosphorylated	ABL1	24	1000
THZ-P1-2	ABL1(Q252H)-phosphorylated	ABL1	20	1000
THZ-P1-2	ABL1(T315I)-nonphosphorylated	ABL1	93	1000
THZ-P1-2	ABL1(T315I)-phosphorylated	ABL1	100	1000
THZ-P1-2	ABL1(Y253F)-phosphorylated	ABL1	2.4	1000
THZ-P1-2	ABL1-nonphosphorylated	ABL1	13	1000
THZ-P1-2	ABL1-phosphorylated	ABL1	8.1	1000
THZ-P1-2	ABL2	ABL2	36	1000
THZ-P1-2	ACVR1	ACVR1	94	1000
THZ-P1-2	ACVR1B	ACVR1B	100	1000
THZ-P1-2	ACVR2A	ACVR2A	94	1000
THZ-P1-2	ACVR2B	ACVR2B	91	1000
THZ-P1-2	ACVRL1	ACVRL1	90	1000
THZ-P1-2	ADCK3	CABC1	77	1000
THZ-P1-2	ADCK4	ADCK4	97	1000
THZ-P1-2	AKT1	AKT1	95	1000
THZ-P1-2	AKT2	AKT2	95	1000
THZ-P1-2	AKT3	AKT3	100	1000
THZ-P1-2	ALK	ALK	92	1000
THZ-P1-2	ALK(C1156Y)	ALK	93	1000
THZ-P1-2	ALK(L1196M)	ALK	71	1000
THZ-P1-2	AMPK-alpha1	PRKAA1	93	1000
THZ-P1-2	AMPK-alpha2	PRKAA2	100	1000
THZ-P1-2	ANKK1	ANKK1	97	1000
THZ-P1-2	ARK5	NUAK1	83	1000
THZ-P1-2	ASK1	MAP3K5	100	1000
THZ-P1-2	ASK2	MAP3K6	95	1000
THZ-P1-2	AURKA	AURKA	99	1000
THZ-P1-2	AURKB	AURKB	100	1000
THZ-P1-2	AURKC	AURKC	83	1000
THZ-P1-2	AXL	AXL	92	1000
THZ-P1-2	BIKE	BMP2K	89	1000
THZ-P1-2	BLK	BLK	34	1000
THZ-P1-2	BMPR1A	BMPR1A	89	1000
THZ-P1-2	BMPR1B	BMPR1B	97	1000
THZ-P1-2	BMPR2	BMPR2	100	1000

THZ-P1-2	BMX	BMX	81	1000
THZ-P1-2	BRAF	BRAF	96	1000
THZ-P1-2	BRAF(V600E)	BRAF	100	1000
THZ-P1-2	BRK	PTK6	6.6	1000
THZ-P1-2	BRSK1	BRSK1	99	1000
THZ-P1-2	BRSK2	BRSK2	95	1000
THZ-P1-2	BTK	BTK	96	1000
THZ-P1-2	BUB1	BUB1	95	1000
THZ-P1-2	CAMK1	CAMK1	93	1000
THZ-P1-2	CAMK1B	PNCK	100	1000
THZ-P1-2	CAMK1D	CAMK1D	93	1000
THZ-P1-2	CAMK1G	CAMK1G	100	1000
THZ-P1-2	CAMK2A	CAMK2A	93	1000
THZ-P1-2	CAMK2B	CAMK2B	100	1000
THZ-P1-2	CAMK2D	CAMK2D	100	1000
THZ-P1-2	CAMK2G	CAMK2G	100	1000
THZ-P1-2	CAMK4	CAMK4	97	1000
THZ-P1-2	CAMKK1	CAMKK1	96	1000
THZ-P1-2	CAMKK2	CAMKK2	94	1000
THZ-P1-2	CASK	CASK	92	1000
THZ-P1-2	CDC2L1	CDK11B	94	1000
THZ-P1-2	CDC2L2	CDC2L2	93	1000
THZ-P1-2	CDC2L5	CDK13	100	1000
THZ-P1-2	CDK11	CDK19	92	1000
THZ-P1-2	CDK2	CDK2	100	1000
THZ-P1-2	CDK3	CDK3	88	1000
THZ-P1-2	CDK4	CDK4	71	1000
THZ-P1-2	CDK4-cyclinD1	CDK4	48	1000
THZ-P1-2	CDK4-cyclinD3	CDK4	70	1000
THZ-P1-2	CDK5	CDK5	89	1000
THZ-P1-2	CDK7	CDK7	37	1000
THZ-P1-2	CDK8	CDK8	100	1000
THZ-P1-2	CDK9	CDK9	84	1000
THZ-P1-2	CDKL1	CDKL1	96	1000
THZ-P1-2	CDKL2	CDKL2	87	1000
THZ-P1-2	CDKL3	CDKL3	96	1000
THZ-P1-2	CDKL5	CDKL5	100	1000
THZ-P1-2	CHEK1	CHEK1	98	1000
THZ-P1-2	CHEK2	CHEK2	100	1000
THZ-P1-2	CIT	CIT	48	1000
THZ-P1-2	CLK1	CLK1	96	1000
THZ-P1-2	CLK2	CLK2	96	1000
THZ-P1-2	CLK3	CLK3	94	1000
THZ-P1-2	CLK4	CLK4	95	1000
THZ-P1-2	CSF1R	CSF1R	67	1000
THZ-P1-2	CSF1R-autoinhibited	CSF1R	83	1000
THZ-P1-2	CSK	CSK	93	1000

THZ-P1-2	CSNK1A1	CSNK1A1	92	1000
THZ-P1-2	CSNK1A1L	CSNK1A1L	85	1000
THZ-P1-2	CSNK1D	CSNK1D	63	1000
THZ-P1-2	CSNK1E	CSNK1E	84	1000
THZ-P1-2	CSNK1G1	CSNK1G1	96	1000
THZ-P1-2	CSNK1G2	CSNK1G2	81	1000
THZ-P1-2	CSNK1G3	CSNK1G3	99	1000
THZ-P1-2	CSNK2A1	CSNK2A1	27	1000
THZ-P1-2	CSNK2A2	CSNK2A2	1.3	1000
THZ-P1-2	CTK	MATK	100	1000
THZ-P1-2	DAPK1	DAPK1	100	1000
THZ-P1-2	DAPK2	DAPK2	91	1000
THZ-P1-2	DAPK3	DAPK3	100	1000
THZ-P1-2	DCAMKL1	DCLK1	100	1000
THZ-P1-2	DCAMKL2	DCLK2	100	1000
THZ-P1-2	DCAMKL3	DCLK3	96	1000
THZ-P1-2	DDR1	DDR1	67	1000
THZ-P1-2	DDR2	DDR2	92	1000
THZ-P1-2	DLK	MAP3K12	93	1000
THZ-P1-2	DMPK	DMPK	82	1000
THZ-P1-2	DMPK2	CDC42BPG	93	1000
THZ-P1-2	DRAK1	STK17A	75	1000
THZ-P1-2	DRAK2	STK17B	61	1000
THZ-P1-2	DYRK1A	DYRK1A	95	1000
THZ-P1-2	DYRK1B	DYRK1B	89	1000
THZ-P1-2	DYRK2	DYRK2	85	1000
THZ-P1-2	EGFR	EGFR	22	1000
THZ-P1-2	EGFR(E746-A750del)	EGFR	1.3	1000
THZ-P1-2	EGFR(G719C)	EGFR	18	1000
THZ-P1-2	EGFR(G719S)	EGFR	22	1000
THZ-P1-2	EGFR(L747-E749del, A750P)	EGFR	9	1000
THZ-P1-2	EGFR(L747-S752del, P753S)	EGFR	16	1000
THZ-P1-2	EGFR(L747-T751del,Sins)	EGFR	6.8	1000
THZ-P1-2	EGFR(L858R)	EGFR	18	1000
THZ-P1-2	EGFR(L858R,T790M)	EGFR	73	1000
THZ-P1-2	EGFR(L861Q)	EGFR	21	1000
THZ-P1-2	EGFR(S752-I759del)	EGFR	14	1000
THZ-P1-2	EGFR(T790M)	EGFR	95	1000
THZ-P1-2	EIF2AK1	EIF2AK1	98	1000
THZ-P1-2	EPHA1	EPHA1	78	1000
THZ-P1-2	EPHA2	EPHA2	71	1000
THZ-P1-2	EPHA3	EPHA3	100	1000
THZ-P1-2	EPHA4	EPHA4	100	1000
THZ-P1-2	EPHA5	EPHA5	87	1000
THZ-P1-2	EPHA6	EPHA6	100	1000
THZ-P1-2	EPHA7	EPHA7	100	1000
THZ-P1-2	EPHA8	EPHA8	100	1000

THZ-P1-2	EPHB1	EPHB1	75	1000
THZ-P1-2	EPHB2	EPHB2	82	1000
THZ-P1-2	EPHB3	EPHB3	100	1000
THZ-P1-2	EPHB4	EPHB4	89	1000
THZ-P1-2	EPHB6	EPHB6	72	1000
THZ-P1-2	ERBB2	ERBB2	91	1000
THZ-P1-2	ERBB3	ERBB3	100	1000
THZ-P1-2	ERBB4	ERBB4	88	1000
THZ-P1-2	ERK1	MAPK3	94	1000
THZ-P1-2	ERK2	MAPK1	87	1000
THZ-P1-2	ERK3	MAPK6	87	1000
THZ-P1-2	ERK4	MAPK4	70	1000
THZ-P1-2	ERK5	MAPK7	74	1000
THZ-P1-2	ERK8	MAPK15	74	1000
THZ-P1-2	ERN1	ERN1	100	1000
THZ-P1-2	FAK	PTK2	90	1000
THZ-P1-2	FER	FER	95	1000
THZ-P1-2	FES	FES	100	1000
THZ-P1-2	FGFR1	FGFR1	95	1000
THZ-P1-2	FGFR2	FGFR2	98	1000
THZ-P1-2	FGFR3	FGFR3	88	1000
THZ-P1-2	FGFR3(G697C)	FGFR3	91	1000
THZ-P1-2	FGFR4	FGFR4	92	1000
THZ-P1-2	FGR	FGR	82	1000
THZ-P1-2	FLT1	FLT1	89	1000
THZ-P1-2	FLT3	FLT3	90	1000
THZ-P1-2	FLT3(D835H)	FLT3	50	1000
THZ-P1-2	FLT3(D835V)	FLT3	37	1000
THZ-P1-2	FLT3(D835Y)	FLT3	45	1000
THZ-P1-2	FLT3(ITD)	FLT3	62	1000
THZ-P1-2	FLT3(ITD,D835V)	FLT3	51	1000
THZ-P1-2	FLT3(ITD,F691L)	FLT3	89	1000
THZ-P1-2	FLT3(K663Q)	FLT3	82	1000
THZ-P1-2	FLT3(N841I)	FLT3	60	1000
THZ-P1-2	FLT3(R834Q)	FLT3	97	1000
THZ-P1-2	FLT3-autoinhibited	FLT3	83	1000
THZ-P1-2	FLT4	FLT4	88	1000
THZ-P1-2	FRK	FRK	96	1000
THZ-P1-2	FYN	FYN	92	1000
THZ-P1-2	GAK	GAK	88	1000
THZ-P1-2	GCN2(Kin.Dom.2,S808G)	EIF2AK4	75	1000
THZ-P1-2	GRK1	GRK1	100	1000
THZ-P1-2	GRK2	ADRBK1	90	1000
THZ-P1-2	GRK3	ADRBK2	63	1000
THZ-P1-2	GRK4	GRK4	96	1000
THZ-P1-2	GRK7	GRK7	100	1000
THZ-P1-2	GSK3A	GSK3A	52	1000

THZ-P1-2	GSK3B	GSK3B	98	1000
THZ-P1-2	HASPIN	GSG2	97	1000
THZ-P1-2	HCK	HCK	98	1000
THZ-P1-2	HIPK1	HIPK1	100	1000
THZ-P1-2	HIPK2	HIPK2	100	1000
THZ-P1-2	HIPK3	HIPK3	93	1000
THZ-P1-2	HIPK4	HIPK4	47	1000
THZ-P1-2	HPK1	MAP4K1	100	1000
THZ-P1-2	HUNK	HUNK	100	1000
THZ-P1-2	ICK	ICK	100	1000
THZ-P1-2	IGF1R	IGF1R	93	1000
THZ-P1-2	IKK-alpha	CHUK	72	1000
THZ-P1-2	IKK-beta	IKBKB	73	1000
THZ-P1-2	IKK-epsilon	IKBKE	100	1000
THZ-P1-2	INSR	INSR	100	1000
THZ-P1-2	INSRR	INSRR	82	1000
THZ-P1-2	IRAK1	IRAK1	85	1000
THZ-P1-2	IRAK3	IRAK3	56	1000
THZ-P1-2	IRAK4	IRAK4	100	1000
THZ-P1-2	ITK	ITK	100	1000
THZ-P1-2	JAK1(JH1domain-catalytic)	JAK1	74	1000
THZ-P1-2	JAK1(JH2domain-pseudokinase)	JAK1	74	1000
THZ-P1-2	JAK2(JH1domain-catalytic)	JAK2	100	1000
THZ-P1-2	JAK3(JH1domain-catalytic)	JAK3	97	1000
THZ-P1-2	JNK1	MAPK8	86	1000
THZ-P1-2	JNK2	MAPK9	90	1000
THZ-P1-2	JNK3	MAPK10	92	1000
THZ-P1-2	KIT	KIT	24	1000
THZ-P1-2	KIT(A829P)	KIT	57	1000
THZ-P1-2	KIT(D816H)	KIT	35	1000
THZ-P1-2	KIT(D816V)	KIT	4.2	1000
THZ-P1-2	KIT(L576P)	KIT	12	1000
THZ-P1-2	KIT(V559D)	KIT	11	1000
THZ-P1-2	KIT(V559D,T670I)	KIT	92	1000
THZ-P1-2	KIT(V559D,V654A)	KIT	59	1000
THZ-P1-2	KIT-autoinhibited	KIT	86	1000
THZ-P1-2	LATS1	LATS1	100	1000
THZ-P1-2	LATS2	LATS2	100	1000
THZ-P1-2	LCK	LCK	79	1000
THZ-P1-2	LIMK1	LIMK1	64	1000
THZ-P1-2	LIMK2	LIMK2	63	1000
THZ-P1-2	LKB1	STK11	64	1000
THZ-P1-2	LOK	STK10	94	1000
THZ-P1-2	LRRK2	LRRK2	91	1000
THZ-P1-2	LRRK2(G2019S)	LRRK2	90	1000
THZ-P1-2	LTK	LTK	93	1000
THZ-P1-2	LYN	LYN	89	1000

THZ-P1-2	LZK	MAP3K13	100	1000
THZ-P1-2	MAK	MAK	100	1000
THZ-P1-2	MAP3K1	MAP3K1	78	1000
THZ-P1-2	MAP3K15	MAP3K15	100	1000
THZ-P1-2	MAP3K2	MAP3K2	100	1000
THZ-P1-2	MAP3K3	MAP3K3	100	1000
THZ-P1-2	MAP3K4	MAP3K4	92	1000
THZ-P1-2	MAP4K2	MAP4K2	99	1000
THZ-P1-2	MAP4K3	MAP4K3	100	1000
THZ-P1-2	MAP4K4	MAP4K4	79	1000
THZ-P1-2	MAP4K5	MAP4K5	94	1000
THZ-P1-2	MAPKAPK2	MAPKAPK2	100	1000
THZ-P1-2	MAPKAPK5	MAPKAPK5	93	1000
THZ-P1-2	MARK1	MARK1	95	1000
THZ-P1-2	MARK2	MARK2	100	1000
THZ-P1-2	MARK3	MARK3	82	1000
THZ-P1-2	MARK4	MARK4	95	1000
THZ-P1-2	MAST1	MAST1	97	1000
THZ-P1-2	MEK1	MAP2K1	92	1000
THZ-P1-2	MEK2	MAP2K2	100	1000
THZ-P1-2	MEK3	MAP2K3	99	1000
THZ-P1-2	MEK4	MAP2K4	100	1000
THZ-P1-2	MEK5	MAP2K5	93	1000
THZ-P1-2	MEK6	MAP2K6	92	1000
THZ-P1-2	MELK	MELK	100	1000
THZ-P1-2	MERTK	MERTK	71	1000
THZ-P1-2	MET	MET	98	1000
THZ-P1-2	MET(M1250T)	MET	90	1000
THZ-P1-2	MET(Y1235D)	MET	100	1000
THZ-P1-2	MINK	MINK1	88	1000
THZ-P1-2	MKK7	MAP2K7	100	1000
THZ-P1-2	MKNK1	MKNK1	87	1000
THZ-P1-2	MKNK2	MKNK2	21	1000
THZ-P1-2	MLCK	MYLK3	98	1000
THZ-P1-2	MLK1	MAP3K9	83	1000
THZ-P1-2	MLK2	MAP3K10	86	1000
THZ-P1-2	MLK3	MAP3K11	73	1000
THZ-P1-2	MRCKA	CDC42BPA	100	1000
THZ-P1-2	MRCKB	CDC42BPB	100	1000
THZ-P1-2	MST1	STK4	82	1000
THZ-P1-2	MST1R	MST1R	99	1000
THZ-P1-2	MST2	STK3	100	1000
THZ-P1-2	MST3	STK24	100	1000
THZ-P1-2	MST4	MST4	97	1000
THZ-P1-2	MTOR	MTOR	100	1000
THZ-P1-2	MUSK	MUSK	84	1000
THZ-P1-2	MYLK	MYLK	99	1000

THZ-P1-2	MYLK2	MYLK2	91	1000
THZ-P1-2	MYLK4	MYLK4	76	1000
THZ-P1-2	MYO3A	MYO3A	100	1000
THZ-P1-2	MYO3B	MYO3B	100	1000
THZ-P1-2	NDR1	STK38	100	1000
THZ-P1-2	NDR2	STK38L	97	1000
THZ-P1-2	NEK1	NEK1	100	1000
THZ-P1-2	NEK10	NEK10	100	1000
THZ-P1-2	NEK11	NEK11	61	1000
THZ-P1-2	NEK2	NEK2	98	1000
THZ-P1-2	NEK3	NEK3	100	1000
THZ-P1-2	NEK4	NEK4	100	1000
THZ-P1-2	NEK5	NEK5	87	1000
THZ-P1-2	NEK6	NEK6	86	1000
THZ-P1-2	NEK7	NEK7	98	1000
THZ-P1-2	NEK9	NEK9	98	1000
THZ-P1-2	NIK	MAP3K14	100	1000
THZ-P1-2	NIM1	MGC42105	100	1000
THZ-P1-2	NLK	NLK	97	1000
THZ-P1-2	OSR1	OXSRI	100	1000
THZ-P1-2	p38-alpha	MAPK14	100	1000
THZ-P1-2	p38-beta	MAPK11	100	1000
THZ-P1-2	p38-delta	MAPK13	85	1000
THZ-P1-2	p38-gamma	MAPK12	100	1000
THZ-P1-2	PAK1	PAK1	91	1000
THZ-P1-2	PAK2	PAK2	91	1000
THZ-P1-2	PAK3	PAK3	89	1000
THZ-P1-2	PAK4	PAK4	98	1000
THZ-P1-2	PAK6	PAK6	78	1000
THZ-P1-2	PAK7	PAK7	98	1000
THZ-P1-2	PCTK1	CDK16	100	1000
THZ-P1-2	PCTK2	CDK17	91	1000
THZ-P1-2	PCTK3	CDK18	97	1000
THZ-P1-2	PDGFRA	PDGFRA	58	1000
THZ-P1-2	PDGFRB	PDGFRB	4.3	1000
THZ-P1-2	PDPK1	PDPK1	100	1000
THZ-P1-2	PFCDPK1(P.falciparum)	CDPK1	100	1000
THZ-P1-2	PFPK5(P.falciparum)	MAL13P1.279	91	1000
THZ-P1-2	PFTAIRE2	CDK15	92	1000
THZ-P1-2	PFTK1	CDK14	82	1000
THZ-P1-2	PHKG1	PHKG1	100	1000
THZ-P1-2	PHKG2	PHKG2	100	1000
THZ-P1-2	PIK3C2B	PIK3C2B	95	1000
THZ-P1-2	PIK3C2G	PIK3C2G	100	1000
THZ-P1-2	PIK3CA	PIK3CA	100	1000
THZ-P1-2	PIK3CA(C420R)	PIK3CA	100	1000
THZ-P1-2	PIK3CA(E542K)	PIK3CA	100	1000

THZ-P1-2	PIK3CA(E545A)	PIK3CA	100	1000
THZ-P1-2	PIK3CA(E545K)	PIK3CA	100	1000
THZ-P1-2	PIK3CA(H1047L)	PIK3CA	100	1000
THZ-P1-2	PIK3CA(H1047Y)	PIK3CA	87	1000
THZ-P1-2	PIK3CA(I800L)	PIK3CA	100	1000
THZ-P1-2	PIK3CA(M1043I)	PIK3CA	100	1000
THZ-P1-2	PIK3CA(Q546K)	PIK3CA	99	1000
THZ-P1-2	PIK3CB	PIK3CB	100	1000
THZ-P1-2	PIK3CD	PIK3CD	100	1000
THZ-P1-2	PIK3CG	PIK3CG	100	1000
THZ-P1-2	PIK4CB	PI4KB	95	1000
THZ-P1-2	PIKFYVE	PIKFYVE	6.4	1000
THZ-P1-2	PIM1	PIM1	95	1000
THZ-P1-2	PIM2	PIM2	90	1000
THZ-P1-2	PIM3	PIM3	96	1000
THZ-P1-2	PIP5K1A	PIP5K1A	84	1000
THZ-P1-2	PIP5K1C	PIP5K1C	20	1000
THZ-P1-2	PIP5K2B	PIP4K2B	82	1000
THZ-P1-2	PIP5K2C	PIP4K2C	9	1000
THZ-P1-2	PKAC-alpha	PRKACA	100	1000
THZ-P1-2	PKAC-beta	PRKACB	85	1000
THZ-P1-2	PKMYT1	PKMYT1	99	1000
THZ-P1-2	PKN1	PKN1	100	1000
THZ-P1-2	PKN2	PKN2	76	1000
THZ-P1-2	PKNB(M.tuberculosis)	pknB	100	1000
THZ-P1-2	PLK1	PLK1	100	1000
THZ-P1-2	PLK2	PLK2	100	1000
THZ-P1-2	PLK3	PLK3	100	1000
THZ-P1-2	PLK4	PLK4	93	1000
THZ-P1-2	PRKCD	PRKCD	100	1000
THZ-P1-2	PRKCE	PRKCE	100	1000
THZ-P1-2	PRKCH	PRKCH	93	1000
THZ-P1-2	PRKCI	PRKCI	96	1000
THZ-P1-2	PRKCQ	PRKCQ	93	1000
THZ-P1-2	PRKD1	PRKD1	100	1000
THZ-P1-2	PRKD2	PRKD2	75	1000
THZ-P1-2	PRKD3	PRKD3	94	1000
THZ-P1-2	PRKG1	PRKG1	100	1000
THZ-P1-2	PRKG2	PRKG2	100	1000
THZ-P1-2	PRKR	EIF2AK2	97	1000
THZ-P1-2	PRKX	PRKX	100	1000
THZ-P1-2	PRP4	PRPF4B	82	1000
THZ-P1-2	PYK2	PTK2B	91	1000
THZ-P1-2	QSK	KIAA0999	95	1000
THZ-P1-2	RAF1	RAF1	100	1000
THZ-P1-2	RET	RET	67	1000
THZ-P1-2	RET(M918T)	RET	73	1000

THZ-P1-2	RET(V804L)	RET	99	1000
THZ-P1-2	RET(V804M)	RET	96	1000
THZ-P1-2	RIOK1	RIOK1	87	1000
THZ-P1-2	RIOK2	RIOK2	91	1000
THZ-P1-2	RIOK3	RIOK3	82	1000
THZ-P1-2	RIPK1	RIPK1	86	1000
THZ-P1-2	RIPK2	RIPK2	91	1000
THZ-P1-2	RIPK4	RIPK4	99	1000
THZ-P1-2	RIPK5	DSTYK	100	1000
THZ-P1-2	ROCK1	ROCK1	100	1000
THZ-P1-2	ROCK2	ROCK2	91	1000
THZ-P1-2	ROS1	ROS1	94	1000
THZ-P1-2	RPS6KA4(Kin.Dom.1-N-terminal)	RPS6KA4	0.1	1000
THZ-P1-2	RPS6KA4(Kin.Dom.2-C-terminal)	RPS6KA4	95	1000
THZ-P1-2	RPS6KA5(Kin.Dom.1-N-terminal)	RPS6KA5	96	1000
THZ-P1-2	RPS6KA5(Kin.Dom.2-C-terminal)	RPS6KA5	99	1000
THZ-P1-2	RSK1(Kin.Dom.1-N-terminal)	RPS6KA1	86	1000
THZ-P1-2	RSK1(Kin.Dom.2-C-terminal)	RPS6KA1	100	1000
THZ-P1-2	RSK2(Kin.Dom.1-N-terminal)	RPS6KA3	96	1000
THZ-P1-2	RSK2(Kin.Dom.2-C-terminal)	RPS6KA3	90	1000
THZ-P1-2	RSK3(Kin.Dom.1-N-terminal)	RPS6KA2	91	1000
THZ-P1-2	RSK3(Kin.Dom.2-C-terminal)	RPS6KA2	94	1000
THZ-P1-2	RSK4(Kin.Dom.1-N-terminal)	RPS6KA6	47	1000
THZ-P1-2	RSK4(Kin.Dom.2-C-terminal)	RPS6KA6	100	1000
THZ-P1-2	S6K1	RPS6KB1	100	1000
THZ-P1-2	SBK1	SBK1	100	1000
THZ-P1-2	SGK	SGK1	100	1000
THZ-P1-2	SgK110	SgK110	100	1000
THZ-P1-2	SGK2	SGK2	100	1000
THZ-P1-2	SGK3	SGK3	89	1000
THZ-P1-2	SIK	SIK1	39	1000
THZ-P1-2	SIK2	SIK2	47	1000
THZ-P1-2	SLK	SLK	99	1000
THZ-P1-2	SNARK	NUAK2	98	1000
THZ-P1-2	SNRK	SNRK	96	1000
THZ-P1-2	SRC	SRC	23	1000
THZ-P1-2	SRMS	SRMS	79	1000
THZ-P1-2	SRPK1	SRPK1	81	1000
THZ-P1-2	SRPK2	SRPK2	100	1000
THZ-P1-2	SRPK3	SRPK3	90	1000
THZ-P1-2	STK16	STK16	88	1000
THZ-P1-2	STK33	STK33	100	1000
THZ-P1-2	STK35	STK35	100	1000
THZ-P1-2	STK36	STK36	38	1000
THZ-P1-2	STK39	STK39	100	1000
THZ-P1-2	SYK	SYK	80	1000
THZ-P1-2	TAK1	MAP3K7	78	1000

THZ-P1-2	TAOK1	TAOK1	98	1000
THZ-P1-2	TAOK2	TAOK2	100	1000
THZ-P1-2	TAOK3	TAOK3	100	1000
THZ-P1-2	TBK1	TBK1	95	1000
THZ-P1-2	TEC	TEC	89	1000
THZ-P1-2	TESK1	TESK1	88	1000
THZ-P1-2	TGFBR1	TGFBR1	100	1000
THZ-P1-2	TGFBR2	TGFBR2	97	1000
THZ-P1-2	TIE1	TIE1	87	1000
THZ-P1-2	TIE2	TEK	98	1000
THZ-P1-2	TLK1	TLK1	94	1000
THZ-P1-2	TLK2	TLK2	99	1000
THZ-P1-2	TNIK	TNIK	98	1000
THZ-P1-2	TNK1	TNK1	81	1000
THZ-P1-2	TNK2	TNK2	48	1000
THZ-P1-2	TNNI3K	TNNI3K	80	1000
THZ-P1-2	TRKA	NTRK1	72	1000
THZ-P1-2	TRKB	NTRK2	100	1000
THZ-P1-2	TRKC	NTRK3	80	1000
THZ-P1-2	TRPM6	TRPM6	91	1000
THZ-P1-2	TSSK1B	TSSK1B	95	1000
THZ-P1-2	TSSK3	TSSK3	100	1000
THZ-P1-2	TTK	TTK	94	1000
THZ-P1-2	TXK	TXK	93	1000
THZ-P1-2	TYK2(JH1domain-catalytic)	TYK2	100	1000
THZ-P1-2	TYK2(JH2domain-pseudokinase)	TYK2	0.9	1000
THZ-P1-2	TYRO3	TYRO3	94	1000
THZ-P1-2	ULK1	ULK1	100	1000
THZ-P1-2	ULK2	ULK2	100	1000
THZ-P1-2	ULK3	ULK3	100	1000
THZ-P1-2	VEGFR2	KDR	88	1000
THZ-P1-2	VPS34	PIK3C3	90	1000
THZ-P1-2	VRK2	VRK2	90	1000
THZ-P1-2	WEE1	WEE1	90	1000
THZ-P1-2	WEE2	WEE2	100	1000
THZ-P1-2	WNK1	WNK1	100	1000
THZ-P1-2	WNK2	WNK2	100	1000
THZ-P1-2	WNK3	WNK3	100	1000
THZ-P1-2	WNK4	WNK4	95	1000
THZ-P1-2	YANK1	STK32A	87	1000
THZ-P1-2	YANK2	STK32B	100	1000
THZ-P1-2	YANK3	STK32C	84	1000
THZ-P1-2	YES	YES1	92	1000
THZ-P1-2	YSK1	STK25	95	1000
THZ-P1-2	YSK4	MAP3K19	100	1000
THZ-P1-2	ZAK	ZAK	93	1000
THZ-P1-2	ZAP70	ZAP70	100	1000