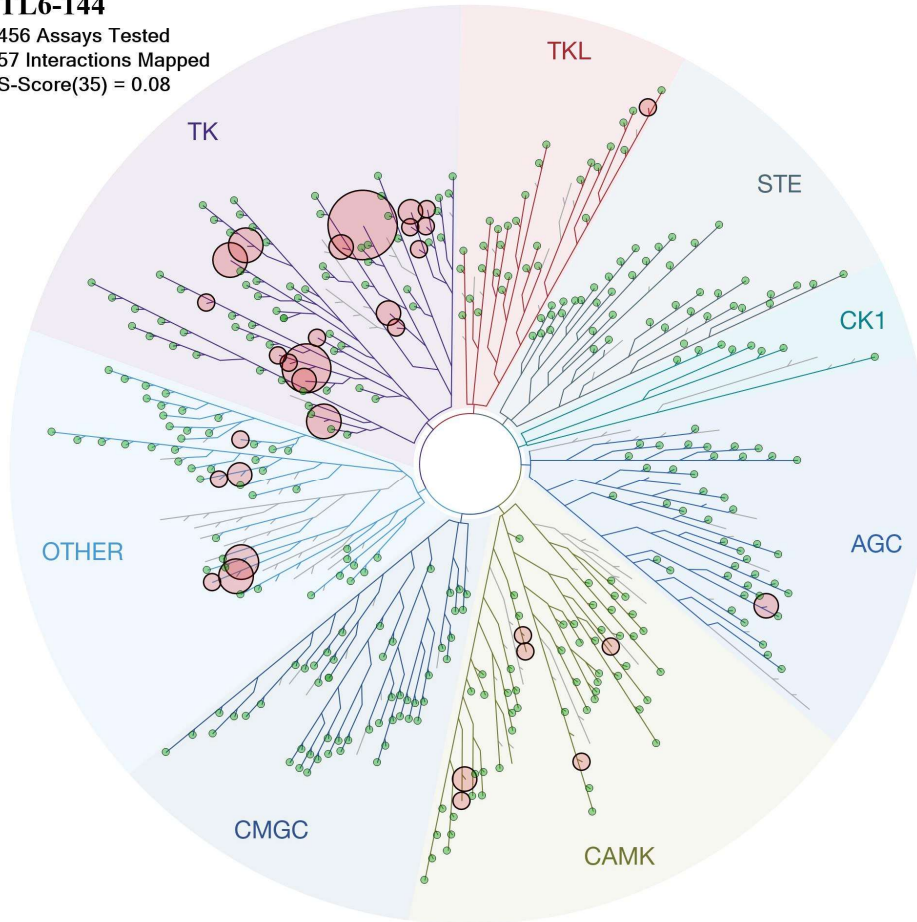


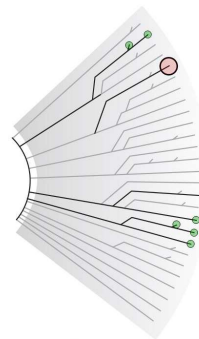
TL6-144

456 Assays Tested
57 Interactions Mapped
S-Score(35) = 0.08

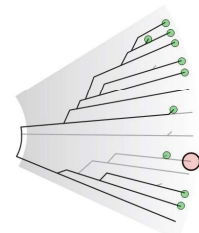


ATYPICAL

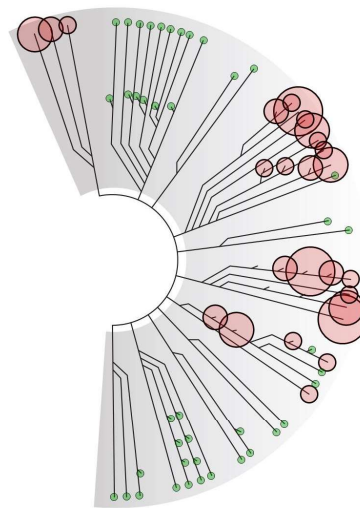
MUTANT



LIPID



PATHOGEN



Compound Name	DiscoverX Gene Symbol	Entrez Gene Symbol	Percent Control	Compound Concentration (nM)
TL6-144	AAK1	AAK1	30	1000
TL6-144	ABL1(E255K)-phosphorylated	ABL1	97	1000
TL6-144	ABL1(F317I)-nonphosphorylated	ABL1	100	1000
TL6-144	ABL1(F317I)-phosphorylated	ABL1	100	1000
TL6-144	ABL1(F317L)-nonphosphorylated	ABL1	100	1000
TL6-144	ABL1(F317L)-phosphorylated	ABL1	100	1000
TL6-144	ABL1(H396P)-nonphosphorylated	ABL1	88	1000
TL6-144	ABL1(H396P)-phosphorylated	ABL1	78	1000
TL6-144	ABL1(M351T)-phosphorylated	ABL1	95	1000
TL6-144	ABL1(Q252H)-nonphosphorylated	ABL1	96	1000
TL6-144	ABL1(Q252H)-phosphorylated	ABL1	100	1000
TL6-144	ABL1(T315I)-nonphosphorylated	ABL1	87	1000
TL6-144	ABL1(T315I)-phosphorylated	ABL1	100	1000
TL6-144	ABL1(Y253F)-phosphorylated	ABL1	100	1000
TL6-144	ABL1-nonphosphorylated	ABL1	60	1000
TL6-144	ABL1-phosphorylated	ABL1	52	1000
TL6-144	ABL2	ABL2	97	1000
TL6-144	ACVR1	ACVR1	100	1000
TL6-144	ACVR1B	ACVR1B	94	1000
TL6-144	ACVR2A	ACVR2A	100	1000
TL6-144	ACVR2B	ACVR2B	85	1000
TL6-144	ACVRL1	ACVRL1	100	1000
TL6-144	ADCK3	CABC1	100	1000
TL6-144	ADCK4	ADCK4	94	1000
TL6-144	AKT1	AKT1	100	1000
TL6-144	AKT2	AKT2	81	1000
TL6-144	AKT3	AKT3	100	1000
TL6-144	ALK	ALK	29	1000
TL6-144	ALK(C1156Y)	ALK	3.3	1000
TL6-144	ALK(L1196M)	ALK	5.4	1000
TL6-144	AMPK-alpha1	PRKAA1	100	1000
TL6-144	AMPK-alpha2	PRKAA2	100	1000
TL6-144	ANKK1	ANKK1	66	1000
TL6-144	ARK5	NUAK1	9.7	1000
TL6-144	ASK1	MAP3K5	100	1000
TL6-144	ASK2	MAP3K6	100	1000
TL6-144	AURKA	AURKA	46	1000
TL6-144	AURKB	AURKB	71	1000
TL6-144	AURKC	AURKC	44	1000
TL6-144	AXL	AXL	100	1000
TL6-144	BIKE	BMP2K	57	1000
TL6-144	BLK	BLK	1.6	1000
TL6-144	BMPR1A	BMPR1A	100	1000
TL6-144	BMPR1B	BMPR1B	88	1000
TL6-144	BMPR2	BMPR2	100	1000

TL6-144	BMX	BMX	75	1000
TL6-144	BRAF	BRAF	92	1000
TL6-144	BRAF(V600E)	BRAF	100	1000
TL6-144	BRK	PTK6	88	1000
TL6-144	BRSK1	BRSK1	100	1000
TL6-144	BRSK2	BRSK2	100	1000
TL6-144	BTK	BTK	75	1000
TL6-144	BUB1	BUB1	90	1000
TL6-144	CAMK1	CAMK1	45	1000
TL6-144	CAMK1D	CAMK1D	16	1000
TL6-144	CAMK1G	CAMK1G	40	1000
TL6-144	CAMK2A	CAMK2A	82	1000
TL6-144	CAMK2B	CAMK2B	88	1000
TL6-144	CAMK2D	CAMK2D	84	1000
TL6-144	CAMK2G	CAMK2G	82	1000
TL6-144	CAMK4	CAMK4	77	1000
TL6-144	CAMKK1	CAMKK1	20	1000
TL6-144	CAMKK2	CAMKK2	4.2	1000
TL6-144	CASK	CASK	86	1000
TL6-144	CDC2L1	CDK11B	95	1000
TL6-144	CDC2L2	CDC2L2	100	1000
TL6-144	CDC2L5	CDK13	100	1000
TL6-144	CDK11	CDK19	98	1000
TL6-144	CDK2	CDK2	100	1000
TL6-144	CDK3	CDK3	86	1000
TL6-144	CDK4-cyclinD1	CDK4	98	1000
TL6-144	CDK4-cyclinD3	CDK4	100	1000
TL6-144	CDK5	CDK5	98	1000
TL6-144	CDK7	CDK7	100	1000
TL6-144	CDK8	CDK8	84	1000
TL6-144	CDK9	CDK9	100	1000
TL6-144	CDKL1	CDKL1	94	1000
TL6-144	CDKL2	CDKL2	87	1000
TL6-144	CDKL3	CDKL3	100	1000
TL6-144	CDKL5	CDKL5	100	1000
TL6-144	CHEK1	CHEK1	90	1000
TL6-144	CHEK2	CHEK2	58	1000
TL6-144	CIT	CIT	90	1000
TL6-144	CLK1	CLK1	67	1000
TL6-144	CLK2	CLK2	100	1000
TL6-144	CLK3	CLK3	100	1000
TL6-144	CLK4	CLK4	100	1000
TL6-144	CSF1R	CSF1R	26	1000
TL6-144	CSF1R-autoinhibited	CSF1R	12	1000
TL6-144	CSK	CSK	99	1000
TL6-144	CSNK1A1	CSNK1A1	77	1000
TL6-144	CSNK1A1L	CSNK1A1L	78	1000

TL6-144	CSNK1D	CSNK1D	100	1000
TL6-144	CSNK1E	CSNK1E	92	1000
TL6-144	CSNK1G1	CSNK1G1	100	1000
TL6-144	CSNK1G2	CSNK1G2	97	1000
TL6-144	CSNK1G3	CSNK1G3	100	1000
TL6-144	CSNK2A1	CSNK2A1	77	1000
TL6-144	CSNK2A2	CSNK2A2	100	1000
TL6-144	CTK	MATK	95	1000
TL6-144	DAPK1	DAPK1	57	1000
TL6-144	DAPK2	DAPK2	69	1000
TL6-144	DAPK3	DAPK3	46	1000
TL6-144	DCAMKL1	DCLK1	41	1000
TL6-144	DCAMKL2	DCLK2	55	1000
TL6-144	DCAMKL3	DCLK3	41	1000
TL6-144	DDR1	DDR1	100	1000
TL6-144	DDR2	DDR2	100	1000
TL6-144	DLK	MAP3K12	97	1000
TL6-144	DMPK	DMPK	84	1000
TL6-144	DMPK2	CDC42BPG	100	1000
TL6-144	DRAK1	STK17A	65	1000
TL6-144	DRAK2	STK17B	58	1000
TL6-144	DYRK1A	DYRK1A	100	1000
TL6-144	DYRK1B	DYRK1B	100	1000
TL6-144	DYRK2	DYRK2	79	1000
TL6-144	EGFR	EGFR	56	1000
TL6-144	EGFR(E746-A750del)	EGFR	24	1000
TL6-144	EGFR(G719C)	EGFR	3.6	1000
TL6-144	EGFR(G719S)	EGFR	7.6	1000
TL6-144	EGFR(L747-E749del, A750P)	EGFR	28	1000
TL6-144	EGFR(L747-S752del, P753S)	EGFR	14	1000
TL6-144	EGFR(L747-T751del,Sins)	EGFR	15	1000
TL6-144	EGFR(L858R)	EGFR	22	1000
TL6-144	EGFR(L858R,T790M)	EGFR	0.65	1000
TL6-144	EGFR(L861Q)	EGFR	6.4	1000
TL6-144	EGFR(S752-I759del)	EGFR	30	1000
TL6-144	EGFR(T790M)	EGFR	2.9	1000
TL6-144	EIF2AK1	EIF2AK1	100	1000
TL6-144	EPHA1	EPHA1	91	1000
TL6-144	EPHA2	EPHA2	100	1000
TL6-144	EPHA3	EPHA3	88	1000
TL6-144	EPHA4	EPHA4	95	1000
TL6-144	EPHA5	EPHA5	100	1000
TL6-144	EPHA6	EPHA6	90	1000
TL6-144	EPHA7	EPHA7	99	1000
TL6-144	EPHA8	EPHA8	86	1000
TL6-144	EPHB1	EPHB1	96	1000
TL6-144	EPHB2	EPHB2	100	1000

TL6-144	EPHB3	EPHB3	98	1000
TL6-144	EPHB4	EPHB4	84	1000
TL6-144	EPHB6	EPHB6	80	1000
TL6-144	ERBB2	ERBB2	48	1000
TL6-144	ERBB3	ERBB3	100	1000
TL6-144	ERBB4	ERBB4	6	1000
TL6-144	ERK1	MAPK3	100	1000
TL6-144	ERK2	MAPK1	92	1000
TL6-144	ERK3	MAPK6	90	1000
TL6-144	ERK4	MAPK4	100	1000
TL6-144	ERK5	MAPK7	84	1000
TL6-144	ERK8	MAPK15	85	1000
TL6-144	ERN1	ERN1	89	1000
TL6-144	FAK	PTK2	4.1	1000
TL6-144	FER	FER	42	1000
TL6-144	FES	FES	26	1000
TL6-144	FGFR1	FGFR1	35	1000
TL6-144	FGFR2	FGFR2	61	1000
TL6-144	FGFR3	FGFR3	79	1000
TL6-144	FGFR3(G697C)	FGFR3	77	1000
TL6-144	FGFR4	FGFR4	65	1000
TL6-144	FGR	FGR	81	1000
TL6-144	FLT1	FLT1	77	1000
TL6-144	FLT3	FLT3	0.6	1000
TL6-144	FLT3(D835H)	FLT3	13	1000
TL6-144	FLT3(D835Y)	FLT3	8	1000
TL6-144	FLT3(ITD)	FLT3	2.5	1000
TL6-144	FLT3(K663Q)	FLT3	14	1000
TL6-144	FLT3(N841I)	FLT3	0.6	1000
TL6-144	FLT3(R834Q)	FLT3	8.3	1000
TL6-144	FLT3-autoinhibited	FLT3	47	1000
TL6-144	FLT4	FLT4	57	1000
TL6-144	FRK	FRK	42	1000
TL6-144	FYN	FYN	81	1000
TL6-144	GAK	GAK	5.4	1000
TL6-144	GCN2(Kin.Dom.2,S808G)	EIF2AK4	100	1000
TL6-144	GRK1	GRK1	84	1000
TL6-144	GRK4	GRK4	100	1000
TL6-144	GRK7	GRK7	98	1000
TL6-144	GSK3A	GSK3A	82	1000
TL6-144	GSK3B	GSK3B	100	1000
TL6-144	HASPIN	GSG2	96	1000
TL6-144	HCK	HCK	57	1000
TL6-144	HIPK1	HIPK1	72	1000
TL6-144	HIPK2	HIPK2	75	1000
TL6-144	HIPK3	HIPK3	100	1000
TL6-144	HIPK4	HIPK4	61	1000

TL6-144	HPK1	MAP4K1	54	1000
TL6-144	HUNK	HUNK	67	1000
TL6-144	ICK	ICK	100	1000
TL6-144	IGF1R	IGF1R	22	1000
TL6-144	IKK-alpha	CHUK	100	1000
TL6-144	IKK-beta	IKBKB	100	1000
TL6-144	IKK-epsilon	IKBKE	100	1000
TL6-144	INSR	INSR	26	1000
TL6-144	INSRR	INSRR	36	1000
TL6-144	IRAK1	IRAK1	100	1000
TL6-144	IRAK3	IRAK3	84	1000
TL6-144	IRAK4	IRAK4	100	1000
TL6-144	ITK	ITK	39	1000
TL6-144	JAK1(JH1domain-catalytic)	JAK1	69	1000
TL6-144	JAK1(JH2domain-pseudokinase)	JAK1	61	1000
TL6-144	JAK2(JH1domain-catalytic)	JAK2	87	1000
TL6-144	JAK3(JH1domain-catalytic)	JAK3	0	1000
TL6-144	JNK1	MAPK8	58	1000
TL6-144	JNK2	MAPK9	87	1000
TL6-144	JNK3	MAPK10	86	1000
TL6-144	KIT	KIT	12	1000
TL6-144	KIT(A829P)	KIT	17	1000
TL6-144	KIT(D816H)	KIT	41	1000
TL6-144	KIT(D816V)	KIT	15	1000
TL6-144	KIT(L576P)	KIT	4.5	1000
TL6-144	KIT(V559D)	KIT	7.8	1000
TL6-144	KIT(V559D,T670I)	KIT	55	1000
TL6-144	KIT(V559D,V654A)	KIT	100	1000
TL6-144	KIT-autoinhibited	KIT	58	1000
TL6-144	LATS1	LATS1	100	1000
TL6-144	LATS2	LATS2	90	1000
TL6-144	LCK	LCK	63	1000
TL6-144	LIMK1	LIMK1	100	1000
TL6-144	LIMK2	LIMK2	95	1000
TL6-144	LKB1	STK11	94	1000
TL6-144	LOK	STK10	75	1000
TL6-144	LRRK2	LRRK2	61	1000
TL6-144	LRRK2(G2019S)	LRRK2	53	1000
TL6-144	LTK	LTK	5.9	1000
TL6-144	LYN	LYN	88	1000
TL6-144	LZK	MAP3K13	96	1000
TL6-144	MAK	MAK	75	1000
TL6-144	MAP3K1	MAP3K1	100	1000
TL6-144	MAP3K15	MAP3K15	94	1000
TL6-144	MAP3K2	MAP3K2	100	1000
TL6-144	MAP3K3	MAP3K3	83	1000
TL6-144	MAP3K4	MAP3K4	76	1000

TL6-144	MAP4K2	MAP4K2	75	1000
TL6-144	MAP4K3	MAP4K3	78	1000
TL6-144	MAP4K4	MAP4K4	81	1000
TL6-144	MAP4K5	MAP4K5	79	1000
TL6-144	MAPKAPK2	MAPKAPK2	100	1000
TL6-144	MAPKAPK5	MAPKAPK5	95	1000
TL6-144	MARK1	MARK1	41	1000
TL6-144	MARK2	MARK2	71	1000
TL6-144	MARK3	MARK3	44	1000
TL6-144	MARK4	MARK4	64	1000
TL6-144	MAST1	MAST1	58	1000
TL6-144	MEK1	MAP2K1	83	1000
TL6-144	MEK2	MAP2K2	88	1000
TL6-144	MEK3	MAP2K3	63	1000
TL6-144	MEK4	MAP2K4	100	1000
TL6-144	MEK5	MAP2K5	100	1000
TL6-144	MEK6	MAP2K6	95	1000
TL6-144	MELK	MELK	52	1000
TL6-144	MERTK	MERTK	100	1000
TL6-144	MET	MET	48	1000
TL6-144	MET(M1250T)	MET	94	1000
TL6-144	MET(Y1235D)	MET	100	1000
TL6-144	MINK	MINK1	54	1000
TL6-144	MKK7	MAP2K7	100	1000
TL6-144	MKNK1	MKNK1	100	1000
TL6-144	MKNK2	MKNK2	27	1000
TL6-144	MLCK	MYLK3	100	1000
TL6-144	MLK1	MAP3K9	32	1000
TL6-144	MLK2	MAP3K10	50	1000
TL6-144	MLK3	MAP3K11	88	1000
TL6-144	MRCKA	CDC42BPA	100	1000
TL6-144	MRCKB	CDC42BPB	97	1000
TL6-144	MST1	STK4	100	1000
TL6-144	MST1R	MST1R	100	1000
TL6-144	MST2	STK3	100	1000
TL6-144	MST3	STK24	90	1000
TL6-144	MST4	MST4	81	1000
TL6-144	MTOR	MTOR	100	1000
TL6-144	MUSK	MUSK	40	1000
TL6-144	MYLK	MYLK	89	1000
TL6-144	MYLK2	MYLK2	78	1000
TL6-144	MYLK4	MYLK4	100	1000
TL6-144	MYO3A	MYO3A	100	1000
TL6-144	MYO3B	MYO3B	84	1000
TL6-144	NDR1	STK38	83	1000
TL6-144	NDR2	STK38L	85	1000
TL6-144	NEK1	NEK1	97	1000

TL6-144	NEK10	NEK10	67	1000
TL6-144	NEK11	NEK11	100	1000
TL6-144	NEK2	NEK2	85	1000
TL6-144	NEK3	NEK3	65	1000
TL6-144	NEK4	NEK4	100	1000
TL6-144	NEK5	NEK5	86	1000
TL6-144	NEK6	NEK6	98	1000
TL6-144	NEK7	NEK7	100	1000
TL6-144	NEK9	NEK9	70	1000
TL6-144	NIK	MAP3K14	100	1000
TL6-144	NIM1	MGC42105	100	1000
TL6-144	NLK	NLK	56	1000
TL6-144	OSR1	OXS1	100	1000
TL6-144	p38-alpha	MAPK14	79	1000
TL6-144	p38-beta	MAPK11	96	1000
TL6-144	p38-delta	MAPK13	100	1000
TL6-144	p38-gamma	MAPK12	97	1000
TL6-144	PAK1	PAK1	81	1000
TL6-144	PAK2	PAK2	82	1000
TL6-144	PAK3	PAK3	100	1000
TL6-144	PAK4	PAK4	84	1000
TL6-144	PAK6	PAK6	100	1000
TL6-144	PAK7	PAK7	78	1000
TL6-144	PCTK1	CDK16	100	1000
TL6-144	PCTK2	CDK17	100	1000
TL6-144	PCTK3	CDK18	91	1000
TL6-144	PDGFRA	PDGFRA	100	1000
TL6-144	PDGFRB	PDGFRB	9.6	1000
TL6-144	PDPK1	PDPK1	82	1000
TL6-144	PFCDPK1(P.falciparum)	CDPK1	100	1000
TL6-144	PFPK5(P.falciparum)	MAL13P1.279	100	1000
TL6-144	PFTAIRE2	CDK15	61	1000
TL6-144	PFTK1	CDK14	99	1000
TL6-144	PHKG1	PHKG1	41	1000
TL6-144	PHKG2	PHKG2	40	1000
TL6-144	PIK3C2B	PIK3C2B	100	1000
TL6-144	PIK3C2G	PIK3C2G	91	1000
TL6-144	PIK3CA	PIK3CA	100	1000
TL6-144	PIK3CA(C420R)	PIK3CA	76	1000
TL6-144	PIK3CA(E542K)	PIK3CA	82	1000
TL6-144	PIK3CA(E545A)	PIK3CA	72	1000
TL6-144	PIK3CA(E545K)	PIK3CA	63	1000
TL6-144	PIK3CA(H1047L)	PIK3CA	97	1000
TL6-144	PIK3CA(H1047Y)	PIK3CA	100	1000
TL6-144	PIK3CA(I800L)	PIK3CA	86	1000
TL6-144	PIK3CA(M1043I)	PIK3CA	95	1000
TL6-144	PIK3CA(Q546K)	PIK3CA	85	1000

TL6-144	PIK3CB	PIK3CB	100	1000
TL6-144	PIK3CD	PIK3CD	100	1000
TL6-144	PIK3CG	PIK3CG	100	1000
TL6-144	PIK4CB	PI4KB	100	1000
TL6-144	PIM1	PIM1	85	1000
TL6-144	PIM2	PIM2	100	1000
TL6-144	PIM3	PIM3	95	1000
TL6-144	PIP5K1A	PIP5K1A	20	1000
TL6-144	PIP5K1C	PIP5K1C	100	1000
TL6-144	PIP5K2B	PIP4K2B	100	1000
TL6-144	PIP5K2C	PIP4K2C	100	1000
TL6-144	PKAC-alpha	PRKACA	100	1000
TL6-144	PKAC-beta	PRKACB	55	1000
TL6-144	PKMYT1	PKMYT1	75	1000
TL6-144	PKN1	PKN1	75	1000
TL6-144	PKN2	PKN2	46	1000
TL6-144	PKNB(M.tuberculosis)	pknB	100	1000
TL6-144	PLK1	PLK1	100	1000
TL6-144	PLK2	PLK2	59	1000
TL6-144	PLK3	PLK3	85	1000
TL6-144	PLK4	PLK4	41	1000
TL6-144	PRKCD	PRKCD	86	1000
TL6-144	PRKCE	PRKCE	95	1000
TL6-144	PRKCH	PRKCH	100	1000
TL6-144	PRKCI	PRKCI	91	1000
TL6-144	PRKCQ	PRKCQ	100	1000
TL6-144	PRKD1	PRKD1	20	1000
TL6-144	PRKD2	PRKD2	37	1000
TL6-144	PRKD3	PRKD3	30	1000
TL6-144	PRKG1	PRKG1	100	1000
TL6-144	PRKG2	PRKG2	88	1000
TL6-144	PRKR	EIF2AK2	72	1000
TL6-144	PRKX	PRKX	100	1000
TL6-144	PRP4	PRPF4B	47	1000
TL6-144	PYK2	PTK2B	46	1000
TL6-144	QSK	KIAA0999	83	1000
TL6-144	RAF1	RAF1	98	1000
TL6-144	RET	RET	76	1000
TL6-144	RET(M918T)	RET	65	1000
TL6-144	RET(V804L)	RET	65	1000
TL6-144	RET(V804M)	RET	86	1000
TL6-144	RIOK1	RIOK1	79	1000
TL6-144	RIOK2	RIOK2	92	1000
TL6-144	RIOK3	RIOK3	51	1000
TL6-144	RIPK1	RIPK1	100	1000
TL6-144	RIPK2	RIPK2	100	1000
TL6-144	RIPK4	RIPK4	100	1000

TL6-144	RIPK5	DSTYK	86	1000
TL6-144	ROCK1	ROCK1	100	1000
TL6-144	ROCK2	ROCK2	87	1000
TL6-144	ROS1	ROS1	18	1000
TL6-144	RPS6KA4(Kin.Dom.1-N-terminal)	RPS6KA4	83	1000
TL6-144	RPS6KA4(Kin.Dom.2-C-terminal)	RPS6KA4	73	1000
TL6-144	RPS6KA5(Kin.Dom.1-N-terminal)	RPS6KA5	100	1000
TL6-144	RPS6KA5(Kin.Dom.2-C-terminal)	RPS6KA5	78	1000
TL6-144	RSK1(Kin.Dom.1-N-terminal)	RPS6KA1	100	1000
TL6-144	RSK1(Kin.Dom.2-C-terminal)	RPS6KA1	62	1000
TL6-144	RSK2(Kin.Dom.1-N-terminal)	RPS6KA3	100	1000
TL6-144	RSK2(Kin.Dom.2-C-terminal)	RPS6KA3	83	1000
TL6-144	RSK3(Kin.Dom.1-N-terminal)	RPS6KA2	85	1000
TL6-144	RSK3(Kin.Dom.2-C-terminal)	RPS6KA2	62	1000
TL6-144	RSK4(Kin.Dom.1-N-terminal)	RPS6KA6	70	1000
TL6-144	RSK4(Kin.Dom.2-C-terminal)	RPS6KA6	57	1000
TL6-144	S6K1	RPS6KB1	76	1000
TL6-144	SBK1	SBK1	100	1000
TL6-144	SGK	SGK1	6.8	1000
TL6-144	SgK110	SgK110	93	1000
TL6-144	SGK2	SGK2	100	1000
TL6-144	SGK3	SGK3	68	1000
TL6-144	SIK	SIK1	85	1000
TL6-144	SIK2	SIK2	69	1000
TL6-144	SLK	SLK	83	1000
TL6-144	SNARK	NUAK2	11	1000
TL6-144	SNRK	SNRK	88	1000
TL6-144	SRC	SRC	98	1000
TL6-144	SRMS	SRMS	100	1000
TL6-144	SRPK1	SRPK1	47	1000
TL6-144	SRPK2	SRPK2	100	1000
TL6-144	SRPK3	SRPK3	100	1000
TL6-144	STK16	STK16	79	1000
TL6-144	STK33	STK33	50	1000
TL6-144	STK35	STK35	100	1000
TL6-144	STK36	STK36	100	1000
TL6-144	STK39	STK39	79	1000
TL6-144	SYK	SYK	54	1000
TL6-144	TAK1	MAP3K7	100	1000
TL6-144	TAOK1	TAOK1	90	1000
TL6-144	TAOK2	TAOK2	77	1000
TL6-144	TAOK3	TAOK3	93	1000
TL6-144	TBK1	TBK1	35	1000
TL6-144	TEC	TEC	100	1000
TL6-144	TESK1	TESK1	81	1000
TL6-144	TGFBR1	TGFBR1	100	1000
TL6-144	TGFBR2	TGFBR2	100	1000

TL6-144	TIE1	TIE1	61	1000
TL6-144	TIE2	TEK	84	1000
TL6-144	TLK1	TLK1	87	1000
TL6-144	TLK2	TLK2	96	1000
TL6-144	TNIK	TNIK	72	1000
TL6-144	TNK1	TNK1	9.9	1000
TL6-144	TNK2	TNK2	14	1000
TL6-144	TNNI3K	TNNI3K	100	1000
TL6-144	TRKA	NTRK1	100	1000
TL6-144	TRKB	NTRK2	100	1000
TL6-144	TRKC	NTRK3	96	1000
TL6-144	TRPM6	TRPM6	10	1000
TL6-144	TSSK1B	TSSK1B	46	1000
TL6-144	TTK	TTK	1.5	1000
TL6-144	TXK	TXK	3.4	1000
TL6-144	TYK2(JH1domain-catalytic)	TYK2	100	1000
TL6-144	TYK2(JH2domain-pseudokinase)	TYK2	100	1000
TL6-144	TYRO3	TYRO3	100	1000
TL6-144	ULK1	ULK1	77	1000
TL6-144	ULK2	ULK2	100	1000
TL6-144	ULK3	ULK3	79	1000
TL6-144	VEGFR2	KDR	93	1000
TL6-144	VRK2	VRK2	100	1000
TL6-144	WEE1	WEE1	96	1000
TL6-144	WEE2	WEE2	99	1000
TL6-144	WNK1	WNK1	100	1000
TL6-144	WNK3	WNK3	100	1000
TL6-144	YANK1	STK32A	86	1000
TL6-144	YANK2	STK32B	96	1000
TL6-144	YANK3	STK32C	80	1000
TL6-144	YES	YES1	86	1000
TL6-144	YSK1	STK25	100	1000
TL6-144	YSK4	MAP3K19	77	1000
TL6-144	ZAK	ZAK	73	1000
TL6-144	ZAP70	ZAP70	55	1000