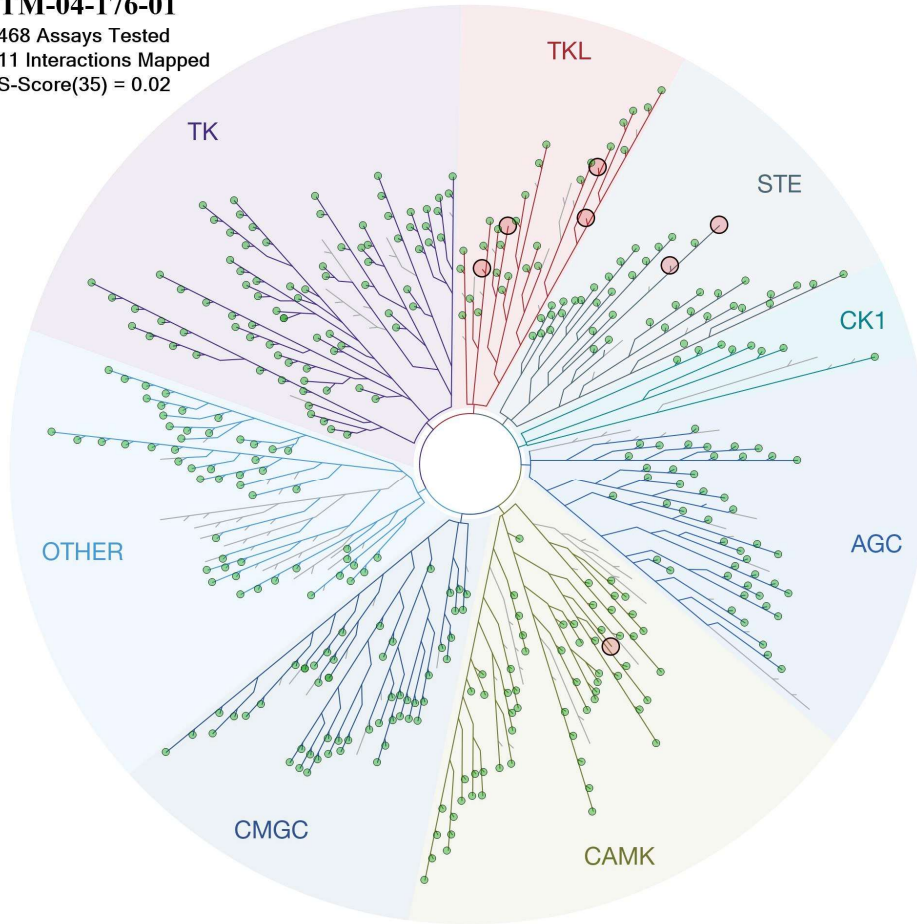
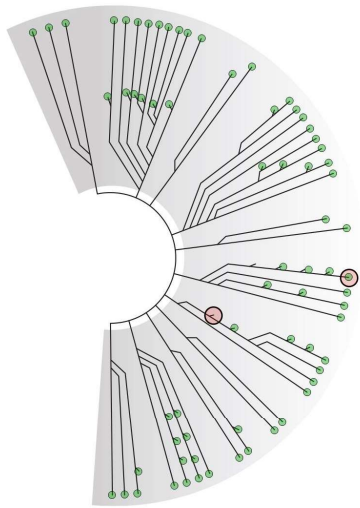
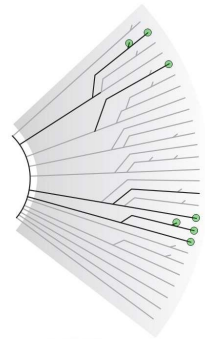


TM-04-176-01
468 Assays Tested
11 Interactions Mapped
S-Score(35) = 0.02

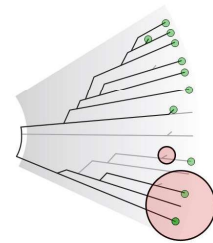


ATYPICAL

MUTANT



LIPID



PATHOGEN



Compound Name	DiscoverX Gene Symbol	Entrez Gene Symbol	Percent Control	Compound Concentration (nM)
TM-04-176-01	AAK1	AAK1	100	1000
TM-04-176-01	ABL1(E255K)-phosphorylated	ABL1	97	1000
TM-04-176-01	ABL1(F317I)-nonphosphorylated	ABL1	100	1000
TM-04-176-01	ABL1(F317I)-phosphorylated	ABL1	88	1000
TM-04-176-01	ABL1(F317L)-nonphosphorylated	ABL1	100	1000
TM-04-176-01	ABL1(F317L)-phosphorylated	ABL1	69	1000
TM-04-176-01	ABL1(H396P)-nonphosphorylated	ABL1	83	1000
TM-04-176-01	ABL1(H396P)-phosphorylated	ABL1	82	1000
TM-04-176-01	ABL1(M351T)-phosphorylated	ABL1	71	1000
TM-04-176-01	ABL1(Q252H)-nonphosphorylated	ABL1	84	1000
TM-04-176-01	ABL1(Q252H)-phosphorylated	ABL1	73	1000
TM-04-176-01	ABL1(T315I)-nonphosphorylated	ABL1	80	1000
TM-04-176-01	ABL1(T315I)-phosphorylated	ABL1	100	1000
TM-04-176-01	ABL1(Y253F)-phosphorylated	ABL1	77	1000
TM-04-176-01	ABL1-nonphosphorylated	ABL1	70	1000
TM-04-176-01	ABL1-phosphorylated	ABL1	85	1000
TM-04-176-01	ABL2	ABL2	94	1000
TM-04-176-01	ACVR1	ACVR1	91	1000
TM-04-176-01	ACVR1B	ACVR1B	100	1000
TM-04-176-01	ACVR2A	ACVR2A	49	1000
TM-04-176-01	ACVR2B	ACVR2B	33	1000
TM-04-176-01	ACVRL1	ACVRL1	77	1000
TM-04-176-01	ADCK3	CABC1	100	1000
TM-04-176-01	ADCK4	ADCK4	94	1000
TM-04-176-01	AKT1	AKT1	100	1000
TM-04-176-01	AKT2	AKT2	96	1000
TM-04-176-01	AKT3	AKT3	98	1000
TM-04-176-01	ALK	ALK	90	1000
TM-04-176-01	ALK(C1156Y)	ALK	93	1000
TM-04-176-01	ALK(L1196M)	ALK	99	1000
TM-04-176-01	AMPK-alpha1	PRKAA1	83	1000
TM-04-176-01	AMPK-alpha2	PRKAA2	99	1000
TM-04-176-01	ANKK1	ANKK1	87	1000
TM-04-176-01	ARK5	NUAK1	78	1000
TM-04-176-01	ASK1	MAP3K5	100	1000
TM-04-176-01	ASK2	MAP3K6	99	1000
TM-04-176-01	AURKA	AURKA	67	1000
TM-04-176-01	AURKB	AURKB	78	1000
TM-04-176-01	AURKC	AURKC	87	1000
TM-04-176-01	AXL	AXL	83	1000
TM-04-176-01	BIKE	BMP2K	92	1000
TM-04-176-01	BLK	BLK	95	1000
TM-04-176-01	BMPR1A	BMPR1A	100	1000
TM-04-176-01	BMPR1B	BMPR1B	64	1000
TM-04-176-01	BMPR2	BMPR2	79	1000

TM-04-176-01	BMX	BMX	100	1000
TM-04-176-01	BRAF	BRAF	88	1000
TM-04-176-01	BRAF(V600E)	BRAF	93	1000
TM-04-176-01	BRK	PTK6	86	1000
TM-04-176-01	BRSK1	BRSK1	86	1000
TM-04-176-01	BRSK2	BRSK2	91	1000
TM-04-176-01	BTK	BTK	63	1000
TM-04-176-01	BUB1	BUB1	85	1000
TM-04-176-01	CAMK1	CAMK1	100	1000
TM-04-176-01	CAMK1B	PNCK	86	1000
TM-04-176-01	CAMK1D	CAMK1D	100	1000
TM-04-176-01	CAMK1G	CAMK1G	100	1000
TM-04-176-01	CAMK2A	CAMK2A	100	1000
TM-04-176-01	CAMK2B	CAMK2B	95	1000
TM-04-176-01	CAMK2D	CAMK2D	100	1000
TM-04-176-01	CAMK2G	CAMK2G	100	1000
TM-04-176-01	CAMK4	CAMK4	89	1000
TM-04-176-01	CAMKK1	CAMKK1	100	1000
TM-04-176-01	CAMKK2	CAMKK2	100	1000
TM-04-176-01	CASK	CASK	88	1000
TM-04-176-01	CDC2L1	CDK11B	100	1000
TM-04-176-01	CDC2L2	CDC2L2	100	1000
TM-04-176-01	CDC2L5	CDK13	92	1000
TM-04-176-01	CDK11	CDK19	100	1000
TM-04-176-01	CDK2	CDK2	98	1000
TM-04-176-01	CDK3	CDK3	100	1000
TM-04-176-01	CDK4	CDK4	72	1000
TM-04-176-01	CDK4-cyclinD1	CDK4	69	1000
TM-04-176-01	CDK4-cyclinD3	CDK4	87	1000
TM-04-176-01	CDK5	CDK5	84	1000
TM-04-176-01	CDK7	CDK7	87	1000
TM-04-176-01	CDK8	CDK8	93	1000
TM-04-176-01	CDK9	CDK9	96	1000
TM-04-176-01	CDKL1	CDKL1	99	1000
TM-04-176-01	CDKL2	CDKL2	65	1000
TM-04-176-01	CDKL3	CDKL3	100	1000
TM-04-176-01	CDKL5	CDKL5	95	1000
TM-04-176-01	CHEK1	CHEK1	93	1000
TM-04-176-01	CHEK2	CHEK2	100	1000
TM-04-176-01	CIT	CIT	84	1000
TM-04-176-01	CLK1	CLK1	67	1000
TM-04-176-01	CLK2	CLK2	98	1000
TM-04-176-01	CLK3	CLK3	90	1000
TM-04-176-01	CLK4	CLK4	100	1000
TM-04-176-01	CSF1R	CSF1R	88	1000
TM-04-176-01	CSF1R-autoinhibited	CSF1R	100	1000
TM-04-176-01	CSK	CSK	100	1000

TM-04-176-01	CSNK1A1	CSNK1A1	90	1000
TM-04-176-01	CSNK1A1L	CSNK1A1L	94	1000
TM-04-176-01	CSNK1D	CSNK1D	98	1000
TM-04-176-01	CSNK1E	CSNK1E	87	1000
TM-04-176-01	CSNK1G1	CSNK1G1	100	1000
TM-04-176-01	CSNK1G2	CSNK1G2	100	1000
TM-04-176-01	CSNK1G3	CSNK1G3	66	1000
TM-04-176-01	CSNK2A1	CSNK2A1	95	1000
TM-04-176-01	CSNK2A2	CSNK2A2	95	1000
TM-04-176-01	CTK	MATK	78	1000
TM-04-176-01	DAPK1	DAPK1	100	1000
TM-04-176-01	DAPK2	DAPK2	99	1000
TM-04-176-01	DAPK3	DAPK3	100	1000
TM-04-176-01	DCAMKL1	DCLK1	99	1000
TM-04-176-01	DCAMKL2	DCLK2	100	1000
TM-04-176-01	DCAMKL3	DCLK3	93	1000
TM-04-176-01	DDR1	DDR1	92	1000
TM-04-176-01	DDR2	DDR2	79	1000
TM-04-176-01	DLK	MAP3K12	78	1000
TM-04-176-01	DMPK	DMPK	95	1000
TM-04-176-01	DMPK2	CDC42BPG	100	1000
TM-04-176-01	DRAK1	STK17A	81	1000
TM-04-176-01	DRAK2	STK17B	85	1000
TM-04-176-01	DYRK1A	DYRK1A	84	1000
TM-04-176-01	DYRK1B	DYRK1B	97	1000
TM-04-176-01	DYRK2	DYRK2	87	1000
TM-04-176-01	EGFR	EGFR	100	1000
TM-04-176-01	EGFR(E746-A750del)	EGFR	100	1000
TM-04-176-01	EGFR(G719C)	EGFR	87	1000
TM-04-176-01	EGFR(G719S)	EGFR	100	1000
TM-04-176-01	EGFR(L747-E749del, A750P)	EGFR	100	1000
TM-04-176-01	EGFR(L747-S752del, P753S)	EGFR	100	1000
TM-04-176-01	EGFR(L747-T751del,Sins)	EGFR	92	1000
TM-04-176-01	EGFR(L858R)	EGFR	100	1000
TM-04-176-01	EGFR(L858R,T790M)	EGFR	86	1000
TM-04-176-01	EGFR(L861Q)	EGFR	95	1000
TM-04-176-01	EGFR(S752-I759del)	EGFR	100	1000
TM-04-176-01	EGFR(T790M)	EGFR	94	1000
TM-04-176-01	EIF2AK1	EIF2AK1	97	1000
TM-04-176-01	EPHA1	EPHA1	97	1000
TM-04-176-01	EPHA2	EPHA2	100	1000
TM-04-176-01	EPHA3	EPHA3	100	1000
TM-04-176-01	EPHA4	EPHA4	94	1000
TM-04-176-01	EPHA5	EPHA5	96	1000
TM-04-176-01	EPHA6	EPHA6	94	1000
TM-04-176-01	EPHA7	EPHA7	93	1000
TM-04-176-01	EPHA8	EPHA8	92	1000

TM-04-176-01	EPHB1	EPHB1	98	1000
TM-04-176-01	EPHB2	EPHB2	97	1000
TM-04-176-01	EPHB3	EPHB3	95	1000
TM-04-176-01	EPHB4	EPHB4	94	1000
TM-04-176-01	EPHB6	EPHB6	89	1000
TM-04-176-01	ERBB2	ERBB2	100	1000
TM-04-176-01	ERBB3	ERBB3	83	1000
TM-04-176-01	ERBB4	ERBB4	100	1000
TM-04-176-01	ERK1	MAPK3	100	1000
TM-04-176-01	ERK2	MAPK1	91	1000
TM-04-176-01	ERK3	MAPK6	95	1000
TM-04-176-01	ERK4	MAPK4	100	1000
TM-04-176-01	ERK5	MAPK7	99	1000
TM-04-176-01	ERK8	MAPK15	58	1000
TM-04-176-01	ERN1	ERN1	82	1000
TM-04-176-01	FAK	PTK2	99	1000
TM-04-176-01	FER	FER	100	1000
TM-04-176-01	FES	FES	94	1000
TM-04-176-01	FGFR1	FGFR1	100	1000
TM-04-176-01	FGFR2	FGFR2	100	1000
TM-04-176-01	FGFR3	FGFR3	100	1000
TM-04-176-01	FGFR3(G697C)	FGFR3	96	1000
TM-04-176-01	FGFR4	FGFR4	66	1000
TM-04-176-01	FGR	FGR	92	1000
TM-04-176-01	FLT1	FLT1	91	1000
TM-04-176-01	FLT3	FLT3	77	1000
TM-04-176-01	FLT3(D835H)	FLT3	96	1000
TM-04-176-01	FLT3(D835V)	FLT3	29	1000
TM-04-176-01	FLT3(D835Y)	FLT3	66	1000
TM-04-176-01	FLT3(ITD)	FLT3	56	1000
TM-04-176-01	FLT3(ITD,D835V)	FLT3	50	1000
TM-04-176-01	FLT3(ITD,F691L)	FLT3	76	1000
TM-04-176-01	FLT3(K663Q)	FLT3	88	1000
TM-04-176-01	FLT3(N841I)	FLT3	100	1000
TM-04-176-01	FLT3(R834Q)	FLT3	82	1000
TM-04-176-01	FLT3-autoinhibited	FLT3	95	1000
TM-04-176-01	FLT4	FLT4	90	1000
TM-04-176-01	FRK	FRK	52	1000
TM-04-176-01	FYN	FYN	91	1000
TM-04-176-01	GAK	GAK	85	1000
TM-04-176-01	GCN2(Kin.Dom.2,S808G)	EIF2AK4	94	1000
TM-04-176-01	GRK1	GRK1	89	1000
TM-04-176-01	GRK2	ADRBK1	98	1000
TM-04-176-01	GRK3	ADRBK2	100	1000
TM-04-176-01	GRK4	GRK4	67	1000
TM-04-176-01	GRK7	GRK7	90	1000
TM-04-176-01	GSK3A	GSK3A	92	1000

TM-04-176-01	GSK3B	GSK3B	90	1000
TM-04-176-01	HASPIN	GSG2	94	1000
TM-04-176-01	HCK	HCK	88	1000
TM-04-176-01	HIPK1	HIPK1	94	1000
TM-04-176-01	HIPK2	HIPK2	94	1000
TM-04-176-01	HIPK3	HIPK3	100	1000
TM-04-176-01	HIPK4	HIPK4	95	1000
TM-04-176-01	HPK1	MAP4K1	100	1000
TM-04-176-01	HUNK	HUNK	100	1000
TM-04-176-01	ICK	ICK	100	1000
TM-04-176-01	IGF1R	IGF1R	97	1000
TM-04-176-01	IKK-alpha	CHUK	92	1000
TM-04-176-01	IKK-beta	IKBKB	94	1000
TM-04-176-01	IKK-epsilon	IKBKE	95	1000
TM-04-176-01	INSR	INSR	80	1000
TM-04-176-01	INSRR	INSRR	100	1000
TM-04-176-01	IRAK1	IRAK1	92	1000
TM-04-176-01	IRAK3	IRAK3	77	1000
TM-04-176-01	IRAK4	IRAK4	86	1000
TM-04-176-01	ITK	ITK	99	1000
TM-04-176-01	JAK1(JH1domain-catalytic)	JAK1	93	1000
TM-04-176-01	JAK1(JH2domain-pseudokinase)	JAK1	99	1000
TM-04-176-01	JAK2(JH1domain-catalytic)	JAK2	85	1000
TM-04-176-01	JAK3(JH1domain-catalytic)	JAK3	78	1000
TM-04-176-01	JNK1	MAPK8	90	1000
TM-04-176-01	JNK2	MAPK9	84	1000
TM-04-176-01	JNK3	MAPK10	85	1000
TM-04-176-01	KIT	KIT	42	1000
TM-04-176-01	KIT(A829P)	KIT	76	1000
TM-04-176-01	KIT(D816H)	KIT	92	1000
TM-04-176-01	KIT(D816V)	KIT	100	1000
TM-04-176-01	KIT(L576P)	KIT	48	1000
TM-04-176-01	KIT(V559D)	KIT	34	1000
TM-04-176-01	KIT(V559D,T670I)	KIT	93	1000
TM-04-176-01	KIT(V559D,V654A)	KIT	92	1000
TM-04-176-01	KIT-autoinhibited	KIT	98	1000
TM-04-176-01	LATS1	LATS1	90	1000
TM-04-176-01	LATS2	LATS2	100	1000
TM-04-176-01	LCK	LCK	99	1000
TM-04-176-01	LIMK1	LIMK1	100	1000
TM-04-176-01	LIMK2	LIMK2	100	1000
TM-04-176-01	LKB1	STK11	100	1000
TM-04-176-01	LOK	STK10	94	1000
TM-04-176-01	LRRK2	LRRK2	85	1000
TM-04-176-01	LRRK2(G2019S)	LRRK2	88	1000
TM-04-176-01	LTK	LTK	83	1000
TM-04-176-01	LYN	LYN	92	1000

TM-04-176-01	LZK	MAP3K13	97	1000
TM-04-176-01	MAK	MAK	100	1000
TM-04-176-01	MAP3K1	MAP3K1	92	1000
TM-04-176-01	MAP3K15	MAP3K15	93	1000
TM-04-176-01	MAP3K2	MAP3K2	92	1000
TM-04-176-01	MAP3K3	MAP3K3	96	1000
TM-04-176-01	MAP3K4	MAP3K4	94	1000
TM-04-176-01	MAP4K2	MAP4K2	100	1000
TM-04-176-01	MAP4K3	MAP4K3	83	1000
TM-04-176-01	MAP4K4	MAP4K4	42	1000
TM-04-176-01	MAP4K5	MAP4K5	91	1000
TM-04-176-01	MAPKAPK2	MAPKAPK2	73	1000
TM-04-176-01	MAPKAPK5	MAPKAPK5	94	1000
TM-04-176-01	MARK1	MARK1	80	1000
TM-04-176-01	MARK2	MARK2	81	1000
TM-04-176-01	MARK3	MARK3	93	1000
TM-04-176-01	MARK4	MARK4	62	1000
TM-04-176-01	MAST1	MAST1	100	1000
TM-04-176-01	MEK1	MAP2K1	93	1000
TM-04-176-01	MEK2	MAP2K2	91	1000
TM-04-176-01	MEK3	MAP2K3	100	1000
TM-04-176-01	MEK4	MAP2K4	98	1000
TM-04-176-01	MEK5	MAP2K5	41	1000
TM-04-176-01	MEK6	MAP2K6	100	1000
TM-04-176-01	MELK	MELK	100	1000
TM-04-176-01	MERTK	MERTK	100	1000
TM-04-176-01	MET	MET	92	1000
TM-04-176-01	MET(M1250T)	MET	95	1000
TM-04-176-01	MET(Y1235D)	MET	90	1000
TM-04-176-01	MINK	MINK1	35	1000
TM-04-176-01	MKK7	MAP2K7	70	1000
TM-04-176-01	MKNK1	MKNK1	82	1000
TM-04-176-01	MKNK2	MKNK2	33	1000
TM-04-176-01	MLCK	MYLK3	89	1000
TM-04-176-01	MLK1	MAP3K9	90	1000
TM-04-176-01	MLK2	MAP3K10	97	1000
TM-04-176-01	MLK3	MAP3K11	94	1000
TM-04-176-01	MRCKA	CDC42BPA	90	1000
TM-04-176-01	MRCKB	CDC42BPB	91	1000
TM-04-176-01	MST1	STK4	76	1000
TM-04-176-01	MST1R	MST1R	100	1000
TM-04-176-01	MST2	STK3	78	1000
TM-04-176-01	MST3	STK24	98	1000
TM-04-176-01	MST4	MST4	96	1000
TM-04-176-01	MTOR	MTOR	94	1000
TM-04-176-01	MUSK	MUSK	99	1000
TM-04-176-01	MYLK	MYLK	97	1000

TM-04-176-01	MYLK2	MYLK2	99	1000
TM-04-176-01	MYLK4	MYLK4	83	1000
TM-04-176-01	MYO3A	MYO3A	100	1000
TM-04-176-01	MYO3B	MYO3B	88	1000
TM-04-176-01	NDR1	STK38	81	1000
TM-04-176-01	NDR2	STK38L	93	1000
TM-04-176-01	NEK1	NEK1	100	1000
TM-04-176-01	NEK10	NEK10	100	1000
TM-04-176-01	NEK11	NEK11	95	1000
TM-04-176-01	NEK2	NEK2	98	1000
TM-04-176-01	NEK3	NEK3	89	1000
TM-04-176-01	NEK4	NEK4	88	1000
TM-04-176-01	NEK5	NEK5	100	1000
TM-04-176-01	NEK6	NEK6	93	1000
TM-04-176-01	NEK7	NEK7	92	1000
TM-04-176-01	NEK9	NEK9	98	1000
TM-04-176-01	NIK	MAP3K14	93	1000
TM-04-176-01	NIM1	MGC42105	80	1000
TM-04-176-01	NLK	NLK	84	1000
TM-04-176-01	OSR1	OXR1	99	1000
TM-04-176-01	p38-alpha	MAPK14	100	1000
TM-04-176-01	p38-beta	MAPK11	100	1000
TM-04-176-01	p38-delta	MAPK13	98	1000
TM-04-176-01	p38-gamma	MAPK12	72	1000
TM-04-176-01	PAK1	PAK1	100	1000
TM-04-176-01	PAK2	PAK2	100	1000
TM-04-176-01	PAK3	PAK3	85	1000
TM-04-176-01	PAK4	PAK4	100	1000
TM-04-176-01	PAK6	PAK6	100	1000
TM-04-176-01	PAK7	PAK7	100	1000
TM-04-176-01	PCKT1	CDK16	62	1000
TM-04-176-01	PCKT2	CDK17	98	1000
TM-04-176-01	PCKT3	CDK18	100	1000
TM-04-176-01	PDGFRA	PDGFRA	79	1000
TM-04-176-01	PDGFRB	PDGFRB	52	1000
TM-04-176-01	PDPK1	PDPK1	100	1000
TM-04-176-01	PFCDPK1(P.falciparum)	CDPK1	67	1000
TM-04-176-01	PFPK5(P.falciparum)	MAL13P1.279	79	1000
TM-04-176-01	PFTAIRE2	CDK15	94	1000
TM-04-176-01	PFTK1	CDK14	95	1000
TM-04-176-01	PHKG1	PHKG1	98	1000
TM-04-176-01	PHKG2	PHKG2	100	1000
TM-04-176-01	PIK3C2B	PIK3C2B	76	1000
TM-04-176-01	PIK3C2G	PIK3C2G	100	1000
TM-04-176-01	PIK3CA	PIK3CA	78	1000
TM-04-176-01	PIK3CA(C420R)	PIK3CA	88	1000
TM-04-176-01	PIK3CA(E542K)	PIK3CA	81	1000

TM-04-176-01	PIK3CA(E545A)	PIK3CA	87	1000
TM-04-176-01	PIK3CA(E545K)	PIK3CA	86	1000
TM-04-176-01	PIK3CA(H1047L)	PIK3CA	86	1000
TM-04-176-01	PIK3CA(H1047Y)	PIK3CA	100	1000
TM-04-176-01	PIK3CA(I800L)	PIK3CA	77	1000
TM-04-176-01	PIK3CA(M1043I)	PIK3CA	88	1000
TM-04-176-01	PIK3CA(Q546K)	PIK3CA	80	1000
TM-04-176-01	PIK3CB	PIK3CB	88	1000
TM-04-176-01	PIK3CD	PIK3CD	83	1000
TM-04-176-01	PIK3CG	PIK3CG	67	1000
TM-04-176-01	PIK4CB	PI4KB	77	1000
TM-04-176-01	PIKFYVE	PIKFYVE	100	1000
TM-04-176-01	PIM1	PIM1	100	1000
TM-04-176-01	PIM2	PIM2	100	1000
TM-04-176-01	PIM3	PIM3	100	1000
TM-04-176-01	PIP5K1A	PIP5K1A	94	1000
TM-04-176-01	PIP5K1C	PIP5K1C	26	1000
TM-04-176-01	PIP5K2B	PIP4K2B	89	1000
TM-04-176-01	PIP5K2C	PIP4K2C	0	1000
TM-04-176-01	PKAC-alpha	PRKACA	100	1000
TM-04-176-01	PKAC-beta	PRKACB	99	1000
TM-04-176-01	PKMYT1	PKMYT1	93	1000
TM-04-176-01	PKN1	PKN1	97	1000
TM-04-176-01	PKN2	PKN2	88	1000
TM-04-176-01	PKNB(M.tuberculosis)	pknB	100	1000
TM-04-176-01	PLK1	PLK1	85	1000
TM-04-176-01	PLK2	PLK2	89	1000
TM-04-176-01	PLK3	PLK3	90	1000
TM-04-176-01	PLK4	PLK4	80	1000
TM-04-176-01	PRKCD	PRKCD	100	1000
TM-04-176-01	PRKCE	PRKCE	100	1000
TM-04-176-01	PRKCH	PRKCH	95	1000
TM-04-176-01	PRKCI	PRKCI	89	1000
TM-04-176-01	PRKCQ	PRKCQ	100	1000
TM-04-176-01	PRKD1	PRKD1	80	1000
TM-04-176-01	PRKD2	PRKD2	97	1000
TM-04-176-01	PRKD3	PRKD3	86	1000
TM-04-176-01	PRKG1	PRKG1	95	1000
TM-04-176-01	PRKG2	PRKG2	98	1000
TM-04-176-01	PRKR	EIF2AK2	100	1000
TM-04-176-01	PRKX	PRKX	88	1000
TM-04-176-01	PRP4	PRPF4B	88	1000
TM-04-176-01	PYK2	PTK2B	96	1000
TM-04-176-01	QSK	KIAA0999	91	1000
TM-04-176-01	RAF1	RAF1	100	1000
TM-04-176-01	RET	RET	86	1000
TM-04-176-01	RET(M918T)	RET	90	1000

TM-04-176-01	RET(V804L)	RET	94	1000
TM-04-176-01	RET(V804M)	RET	93	1000
TM-04-176-01	RIOK1	RIOK1	78	1000
TM-04-176-01	RIOK2	RIOK2	97	1000
TM-04-176-01	RIOK3	RIOK3	93	1000
TM-04-176-01	RIPK1	RIPK1	97	1000
TM-04-176-01	RIPK2	RIPK2	19	1000
TM-04-176-01	RIPK4	RIPK4	87	1000
TM-04-176-01	RIPK5	DSTYK	92	1000
TM-04-176-01	ROCK1	ROCK1	84	1000
TM-04-176-01	ROCK2	ROCK2	94	1000
TM-04-176-01	ROS1	ROS1	100	1000
TM-04-176-01	RPS6KA4(Kin.Dom.1-N-terminal)	RPS6KA4	93	1000
TM-04-176-01	RPS6KA4(Kin.Dom.2-C-terminal)	RPS6KA4	87	1000
TM-04-176-01	RPS6KA5(Kin.Dom.1-N-terminal)	RPS6KA5	94	1000
TM-04-176-01	RPS6KA5(Kin.Dom.2-C-terminal)	RPS6KA5	88	1000
TM-04-176-01	RSK1(Kin.Dom.1-N-terminal)	RPS6KA1	88	1000
TM-04-176-01	RSK1(Kin.Dom.2-C-terminal)	RPS6KA1	99	1000
TM-04-176-01	RSK2(Kin.Dom.1-N-terminal)	RPS6KA3	82	1000
TM-04-176-01	RSK2(Kin.Dom.2-C-terminal)	RPS6KA3	75	1000
TM-04-176-01	RSK3(Kin.Dom.1-N-terminal)	RPS6KA2	99	1000
TM-04-176-01	RSK3(Kin.Dom.2-C-terminal)	RPS6KA2	99	1000
TM-04-176-01	RSK4(Kin.Dom.1-N-terminal)	RPS6KA6	91	1000
TM-04-176-01	RSK4(Kin.Dom.2-C-terminal)	RPS6KA6	95	1000
TM-04-176-01	S6K1	RPS6KB1	75	1000
TM-04-176-01	SBK1	SBK1	100	1000
TM-04-176-01	SGK	SGK1	99	1000
TM-04-176-01	SgK110	SgK110	95	1000
TM-04-176-01	SGK2	SGK2	100	1000
TM-04-176-01	SGK3	SGK3	87	1000
TM-04-176-01	SIK	SIK1	95	1000
TM-04-176-01	SIK2	SIK2	62	1000
TM-04-176-01	SLK	SLK	100	1000
TM-04-176-01	SNARK	NUAK2	96	1000
TM-04-176-01	SNRK	SNRK	89	1000
TM-04-176-01	SRC	SRC	100	1000
TM-04-176-01	SRMS	SRMS	83	1000
TM-04-176-01	SRPK1	SRPK1	60	1000
TM-04-176-01	SRPK2	SRPK2	86	1000
TM-04-176-01	SRPK3	SRPK3	54	1000
TM-04-176-01	STK16	STK16	100	1000
TM-04-176-01	STK33	STK33	96	1000
TM-04-176-01	STK35	STK35	81	1000
TM-04-176-01	STK36	STK36	99	1000
TM-04-176-01	STK39	STK39	94	1000
TM-04-176-01	SYK	SYK	95	1000
TM-04-176-01	TAK1	MAP3K7	90	1000

TM-04-176-01	TAOK1	TAOK1	81	1000
TM-04-176-01	TAOK2	TAOK2	85	1000
TM-04-176-01	TAOK3	TAOK3	84	1000
TM-04-176-01	TBK1	TBK1	96	1000
TM-04-176-01	TEC	TEC	95	1000
TM-04-176-01	TESK1	TESK1	79	1000
TM-04-176-01	TGFBR1	TGFBR1	100	1000
TM-04-176-01	TGFBR2	TGFBR2	50	1000
TM-04-176-01	TIE1	TIE1	100	1000
TM-04-176-01	TIE2	TEK	99	1000
TM-04-176-01	TLK1	TLK1	97	1000
TM-04-176-01	TLK2	TLK2	94	1000
TM-04-176-01	TNIK	TNIK	23	1000
TM-04-176-01	TNK1	TNK1	100	1000
TM-04-176-01	TNK2	TNK2	94	1000
TM-04-176-01	TNNI3K	TNNI3K	20	1000
TM-04-176-01	TRKA	NTRK1	80	1000
TM-04-176-01	TRKB	NTRK2	93	1000
TM-04-176-01	TRKC	NTRK3	85	1000
TM-04-176-01	TRPM6	TRPM6	71	1000
TM-04-176-01	TSSK1B	TSSK1B	100	1000
TM-04-176-01	TSSK3	TSSK3	88	1000
TM-04-176-01	TTK	TTK	94	1000
TM-04-176-01	TXK	TXK	83	1000
TM-04-176-01	TYK2(JH1domain-catalytic)	TYK2	92	1000
TM-04-176-01	TYK2(JH2domain-pseudokinase)	TYK2	80	1000
TM-04-176-01	TYRO3	TYRO3	100	1000
TM-04-176-01	ULK1	ULK1	98	1000
TM-04-176-01	ULK2	ULK2	90	1000
TM-04-176-01	ULK3	ULK3	93	1000
TM-04-176-01	VEGFR2	KDR	96	1000
TM-04-176-01	VPS34	PIK3C3	92	1000
TM-04-176-01	VRK2	VRK2	51	1000
TM-04-176-01	WEE1	WEE1	100	1000
TM-04-176-01	WEE2	WEE2	99	1000
TM-04-176-01	WNK1	WNK1	94	1000
TM-04-176-01	WNK2	WNK2	95	1000
TM-04-176-01	WNK3	WNK3	93	1000
TM-04-176-01	WNK4	WNK4	99	1000
TM-04-176-01	YANK1	STK32A	85	1000
TM-04-176-01	YANK2	STK32B	90	1000
TM-04-176-01	YANK3	STK32C	97	1000
TM-04-176-01	YES	YES1	99	1000
TM-04-176-01	YSK1	STK25	100	1000
TM-04-176-01	YSK4	MAP3K19	81	1000
TM-04-176-01	ZAK	ZAK	32	1000
TM-04-176-01	ZAP70	ZAP70	74	1000