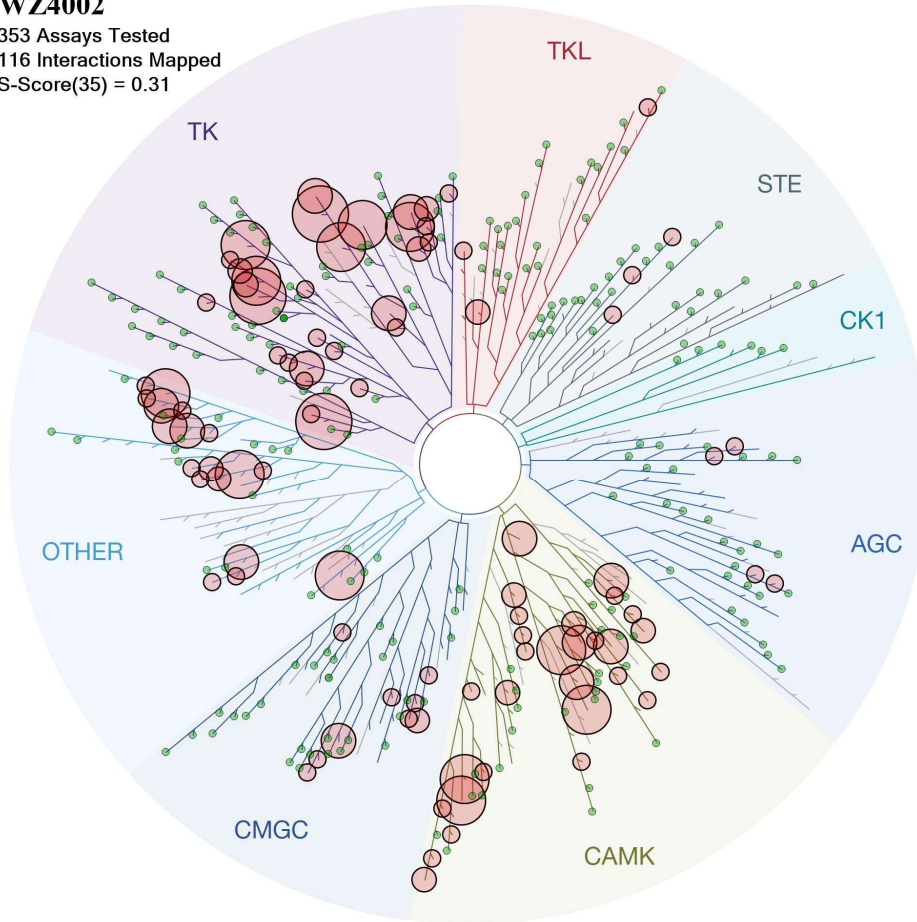


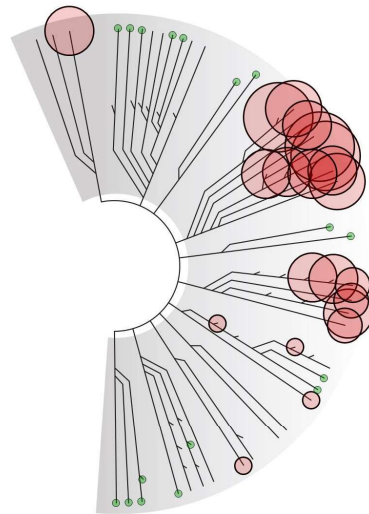
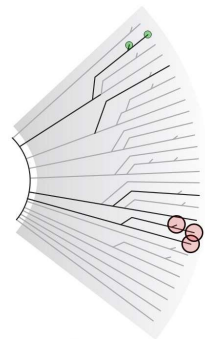
WZ4002

353 Assays Tested
116 Interactions Mapped
S-Score(35) = 0.31

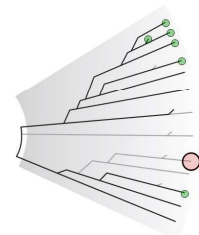


ATYPICAL

MUTANT



LIPID



PATHOGEN



Compound Name	DiscoverX Gene Symbol	Entrez Gene Symbol	Percent Control	Compound Concentration
WZ4002	AAK1	AAK1	7	1000
WZ4002	ABL1	ABL1	97	1000
WZ4002	ABL1(E255K)	ABL1	100	1000
WZ4002	ABL1(F317I)	ABL1	55	1000
WZ4002	ABL1(F317L)	ABL1	56	1000
WZ4002	ABL1(H396P)	ABL1	88	1000
WZ4002	ABL1(M351T)	ABL1	79	1000
WZ4002	ABL1(Q252H)	ABL1	87	1000
WZ4002	ABL1(T315I)	ABL1	59	1000
WZ4002	ABL1(Y253F)	ABL1	84	1000
WZ4002	ABL2	ABL2	84	1000
WZ4002	ACVR1	ACVR1	87	1000
WZ4002	ACVR1B	ACVR1B	86	1000
WZ4002	ACVR2A	ACVR2A	87	1000
WZ4002	ACVR2B	ACVR2B	96	1000
WZ4002	ACVRL1	ACVRL1	100	1000
WZ4002	ADCK3	CABC1	100	1000
WZ4002	ADCK4	ADCK4	80	1000
WZ4002	AKT1	AKT1	100	1000
WZ4002	AKT2	AKT2	100	1000
WZ4002	AKT3	AKT3	100	1000
WZ4002	ALK	ALK	0.7	1000
WZ4002	AMPK-alpha1	PRKAA1	28	1000
WZ4002	AMPK-alpha2	PRKAA2	39	1000
WZ4002	ANKK1	ANKK1	100	1000
WZ4002	ARK5	NUAK1	0.65	1000
WZ4002	ASK1	MAP3K5	100	1000
WZ4002	AURKA	AURKA	28	1000
WZ4002	AURKB	AURKB	20	1000
WZ4002	AURKC	AURKC	4.5	1000
WZ4002	AXL	AXL	50	1000
WZ4002	BIKE	BMP2K	18	1000
WZ4002	BLK	BLK	0.75	1000
WZ4002	BMPR1A	BMPR1A	100	1000
WZ4002	BMPR1B	BMPR1B	77	1000
WZ4002	BMPR2	BMPR2	82	1000
WZ4002	BMX	BMX	8.6	1000
WZ4002	BRAF	BRAF	87	1000
WZ4002	BRAF(V600E)	BRAF	81	1000
WZ4002	BRK	PTK6	65	1000
WZ4002	BRSK1	BRSK1	78	1000
WZ4002	BRSK2	BRSK2	85	1000
WZ4002	BTK	BTK	0.1	1000
WZ4002	CAMK1	CAMK1	59	1000

WZ4002	CAMK1D	CAMK1D	27	1000
WZ4002	CAMK1G	CAMK1G	52	1000
WZ4002	CAMK2A	CAMK2A	40	1000
WZ4002	CAMK2B	CAMK2B	47	1000
WZ4002	CAMK2D	CAMK2D	48	1000
WZ4002	CAMK2G	CAMK2G	46	1000
WZ4002	CAMK4	CAMK4	100	1000
WZ4002	CAMKK1	CAMKK1	18	1000
WZ4002	CAMKK2	CAMKK2	10	1000
WZ4002	CDC2L1	CDK11B	100	1000
WZ4002	CDC2L2	CDC2L2	84	1000
WZ4002	CDK11	CDK19	84	1000
WZ4002	CDK2	CDK2	100	1000
WZ4002	CDK3	CDK3	77	1000
WZ4002	CDK5	CDK5	98	1000
WZ4002	CDK7	CDK7	35	1000
WZ4002	CDK8	CDK8	81	1000
WZ4002	CDK9	CDK9	78	1000
WZ4002	CDKL2	CDKL2	72	1000
WZ4002	CHEK1	CHEK1	7.1	1000
WZ4002	CHEK2	CHEK2	8.9	1000
WZ4002	CIT	CIT	80	1000
WZ4002	CLK1	CLK1	13	1000
WZ4002	CLK2	CLK2	53	1000
WZ4002	CLK3	CLK3	93	1000
WZ4002	CLK4	CLK4	12	1000
WZ4002	CSF1R	CSF1R	14	1000
WZ4002	CSK	CSK	92	1000
WZ4002	CSNK1A1L	CSNK1A1L	100	1000
WZ4002	CSNK1D	CSNK1D	100	1000
WZ4002	CSNK1E	CSNK1E	100	1000
WZ4002	CSNK1G1	CSNK1G1	100	1000
WZ4002	CSNK1G2	CSNK1G2	100	1000
WZ4002	CSNK1G3	CSNK1G3	91	1000
WZ4002	CSNK2A1	CSNK2A1	42	1000
WZ4002	CSNK2A2	CSNK2A2	57	1000
WZ4002	DAPK1	DAPK1	22	1000
WZ4002	DAPK2	DAPK2	28	1000
WZ4002	DAPK3	DAPK3	7.4	1000
WZ4002	DCAMKL1	DCLK1	1.1	1000
WZ4002	DCAMKL2	DCLK2	0.45	1000
WZ4002	DCAMKL3	DCLK3	0.35	1000
WZ4002	DDR1	DDR1	58	1000
WZ4002	DDR2	DDR2	100	1000
WZ4002	DLK	MAP3K12	83	1000
WZ4002	DMPK	DMPK	17	1000
WZ4002	DMPK2	CDC42BPG	61	1000

WZ4002	DRAK1	STK17A	1.6	1000
WZ4002	DRAK2	STK17B	60	1000
WZ4002	DYRK1B	DYRK1B	17	1000
WZ4002	EGFR	EGFR	0.1	1000
WZ4002	EGFR(E746-A750del)	EGFR	0.2	1000
WZ4002	EGFR(G719C)	EGFR	0.35	1000
WZ4002	EGFR(G719S)	EGFR	0.3	1000
WZ4002	EGFR(L747-E749del, A750P)	EGFR	0.05	1000
WZ4002	EGFR(L747-S752del, P753S)	EGFR	0.4	1000
WZ4002	EGFR(L747-T751del,Sins)	EGFR	0	1000
WZ4002	EGFR(L858R)	EGFR	0.1	1000
WZ4002	EGFR(L861Q)	EGFR	0.05	1000
WZ4002	EGFR(S752-I759del)	EGFR	0.25	1000
WZ4002	EPHA1	EPHA1	100	1000
WZ4002	EPHA2	EPHA2	100	1000
WZ4002	EPHA3	EPHA3	95	1000
WZ4002	EPHA4	EPHA4	98	1000
WZ4002	EPHA5	EPHA5	89	1000
WZ4002	EPHA6	EPHA6	84	1000
WZ4002	EPHA7	EPHA7	93	1000
WZ4002	EPHA8	EPHA8	97	1000
WZ4002	EPHB1	EPHB1	96	1000
WZ4002	EPHB2	EPHB2	91	1000
WZ4002	EPHB3	EPHB3	91	1000
WZ4002	EPHB4	EPHB4	100	1000
WZ4002	ERBB2	ERBB2	1.8	1000
WZ4002	ERBB4	ERBB4	0.25	1000
WZ4002	ERK1	MAPK3	100	1000
WZ4002	ERK2	MAPK1	100	1000
WZ4002	ERK3	MAPK6	93	1000
WZ4002	ERK4	MAPK4	91	1000
WZ4002	ERK5	MAPK7	4	1000
WZ4002	ERK8	MAPK15	89	1000
WZ4002	FAK	PTK2	0.1	1000
WZ4002	FER	FER	11	1000
WZ4002	FES	FES	11	1000
WZ4002	FGFR1	FGFR1	10	1000
WZ4002	FGFR2	FGFR2	60	1000
WZ4002	FGFR3	FGFR3	63	1000
WZ4002	FGFR3(G697C)	FGFR3	76	1000
WZ4002	FGFR4	FGFR4	41	1000
WZ4002	FGR	FGR	85	1000
WZ4002	FLT1	FLT1	49	1000
WZ4002	FLT3	FLT3	4.6	1000
WZ4002	FLT3(D835H)	FLT3	4	1000
WZ4002	FLT3(D835Y)	FLT3	0.8	1000
WZ4002	FLT3(ITD)	FLT3	0.85	1000

WZ4002	FLT3(K663Q)	FLT3	1.1	1000
WZ4002	FLT3(N841I)	FLT3	0.25	1000
WZ4002	FLT4	FLT4	56	1000
WZ4002	FRK	FRK	28	1000
WZ4002	FYN	FYN	87	1000
WZ4002	GAK	GAK	0.45	1000
WZ4002	GCN2(Kin.Dom.2,S808G)	EIF2AK4	0.35	1000
WZ4002	GSK3A	GSK3A	100	1000
WZ4002	GSK3B	GSK3B	100	1000
WZ4002	HCK	HCK	100	1000
WZ4002	HIPK1	HIPK1	62	1000
WZ4002	HPK1	MAP4K1	34	1000
WZ4002	IGF1R	IGF1R	7.4	1000
WZ4002	IKK-alpha	CHUK	49	1000
WZ4002	IKK-beta	IKBKB	74	1000
WZ4002	IKK-epsilon	IKBKE	100	1000
WZ4002	INSR	INSR	17	1000
WZ4002	INSRR	INSRR	13	1000
WZ4002	IRAK3	IRAK3	35	1000
WZ4002	ITK	ITK	0.55	1000
WZ4002	JAK1(JH1domain-catalytic)	JAK1	100	1000
WZ4002	JAK1(JH2domain-pseudokinase)	JAK1	84	1000
WZ4002	JAK2(JH1domain-catalytic)	JAK2	82	1000
WZ4002	JAK3(JH1domain-catalytic)	JAK3	0.4	1000
WZ4002	JNK1	MAPK8	17	1000
WZ4002	JNK2	MAPK9	45	1000
WZ4002	JNK3	MAPK10	13	1000
WZ4002	KIT	KIT	34	1000
WZ4002	KIT(D816V)	KIT	13	1000
WZ4002	KIT(V559D)	KIT	26	1000
WZ4002	KIT(V559D,T670I)	KIT	38	1000
WZ4002	KIT(V559D,V654A)	KIT	79	1000
WZ4002	LATS1	LATS1	100	1000
WZ4002	LATS2	LATS2	79	1000
WZ4002	LCK	LCK	100	1000
WZ4002	LIMK1	LIMK1	79	1000
WZ4002	LIMK2	LIMK2	100	1000
WZ4002	LKB1	STK11	65	1000
WZ4002	LOK	STK10	100	1000
WZ4002	LTK	LTK	3.6	1000
WZ4002	LYN	LYN	92	1000
WZ4002	MAP3K3	MAP3K3	74	1000
WZ4002	MAP3K4	MAP3K4	86	1000
WZ4002	MAP4K2	MAP4K2	76	1000
WZ4002	MAP4K3	MAP4K3	29	1000
WZ4002	MAP4K4	MAP4K4	60	1000
WZ4002	MAP4K5	MAP4K5	82	1000

WZ4002	MAPKAPK2	MAPKAPK2	100	1000
WZ4002	MAPKAPK5	MAPKAPK5	95	1000
WZ4002	MARK1	MARK1	11	1000
WZ4002	MARK2	MARK2	64	1000
WZ4002	MARK3	MARK3	7.8	1000
WZ4002	MARK4	MARK4	16	1000
WZ4002	MEK1	MAP2K1	100	1000
WZ4002	MEK2	MAP2K2	100	1000
WZ4002	MEK3	MAP2K3	100	1000
WZ4002	MEK4	MAP2K4	67	1000
WZ4002	MEK6	MAP2K6	82	1000
WZ4002	MELK	MELK	14	1000
WZ4002	MERTK	MERTK	80	1000
WZ4002	MET	MET	20	1000
WZ4002	MINK	MINK1	47	1000
WZ4002	MKNK1	MKNK1	55	1000
WZ4002	MKNK2	MKNK2	2.1	1000
WZ4002	MLCK	MYLK3	96	1000
WZ4002	MLK1	MAP3K9	35	1000
WZ4002	MLK2	MAP3K10	71	1000
WZ4002	MLK3	MAP3K11	68	1000
WZ4002	MRCKA	CDC42BPA	83	1000
WZ4002	MRCKB	CDC42BPB	66	1000
WZ4002	MST1	STK4	36	1000
WZ4002	MST1R	MST1R	100	1000
WZ4002	MST2	STK3	86	1000
WZ4002	MST3	STK24	79	1000
WZ4002	MST4	MST4	100	1000
WZ4002	MUSK	MUSK	63	1000
WZ4002	MYLK	MYLK	80	1000
WZ4002	MYLK2	MYLK2	73	1000
WZ4002	MYLK4	MYLK4	25	1000
WZ4002	MYO3A	MYO3A	28	1000
WZ4002	MYO3B	MYO3B	71	1000
WZ4002	NDR2	STK38L	80	1000
WZ4002	NEK1	NEK1	73	1000
WZ4002	NEK2	NEK2	71	1000
WZ4002	NEK5	NEK5	85	1000
WZ4002	NEK6	NEK6	9.1	1000
WZ4002	NEK7	NEK7	12	1000
WZ4002	NEK9	NEK9	38	1000
WZ4002	NLK	NLK	95	1000
WZ4002	p38-alpha	MAPK14	76	1000
WZ4002	p38-beta	MAPK11	100	1000
WZ4002	p38-delta	MAPK13	99	1000
WZ4002	p38-gamma	MAPK12	78	1000
WZ4002	PAK1	PAK1	79	1000

WZ4002	PAK2	PAK2	85	1000
WZ4002	PAK3	PAK3	48	1000
WZ4002	PAK4	PAK4	71	1000
WZ4002	PAK6	PAK6	52	1000
WZ4002	PAK7	PAK7	59	1000
WZ4002	PCTK1	CDK16	67	1000
WZ4002	PCTK2	CDK17	80	1000
WZ4002	PCTK3	CDK18	85	1000
WZ4002	PDGFRA	PDGFRA	69	1000
WZ4002	PDGFRB	PDGFRB	11	1000
WZ4002	PDPK1	PDPK1	75	1000
WZ4002	PFTAIRES2	CDK15	100	1000
WZ4002	PFTK1	CDK14	95	1000
WZ4002	PHKG1	PHKG1	7.7	1000
WZ4002	PHKG2	PHKG2	3.5	1000
WZ4002	PIK3C2B	PIK3C2B	84	1000
WZ4002	PIK3CA	PIK3CA	99	1000
WZ4002	PIK3CA(E545K)	PIK3CA	100	1000
WZ4002	PIK3CB	PIK3CB	83	1000
WZ4002	PIK3CD	PIK3CD	100	1000
WZ4002	PIK3CG	PIK3CG	86	1000
WZ4002	PIM1	PIM1	83	1000
WZ4002	PIM2	PIM2	100	1000
WZ4002	PIM3	PIM3	100	1000
WZ4002	PIP5K1A	PIP5K1A	11	1000
WZ4002	PIP5K2B	PIP4K2B	71	1000
WZ4002	PKAC-alpha	PRKACA	100	1000
WZ4002	PKAC-beta	PRKACB	100	1000
WZ4002	PKMYT1	PKMYT1	88	1000
WZ4002	PKN1	PKN1	83	1000
WZ4002	PKN2	PKN2	59	1000
WZ4002	PLK1	PLK1	16	1000
WZ4002	PLK3	PLK3	100	1000
WZ4002	PLK4	PLK4	0.2	1000
WZ4002	PRKCD	PRKCD	91	1000
WZ4002	PRKCE	PRKCE	87	1000
WZ4002	PRKCH	PRKCH	100	1000
WZ4002	PRKCQ	PRKCQ	66	1000
WZ4002	PRKD1	PRKD1	12	1000
WZ4002	PRKD2	PRKD2	15	1000
WZ4002	PRKD3	PRKD3	10	1000
WZ4002	PRKG1	PRKG1	39	1000
WZ4002	PRKG2	PRKG2	91	1000
WZ4002	PRKR	EIF2AK2	76	1000
WZ4002	PRKX	PRKX	69	1000
WZ4002	PYK2	PTK2B	25	1000
WZ4002	RAF1	RAF1	96	1000

WZ4002	RET	RET	53	1000
WZ4002	RET(M918T)	RET	48	1000
WZ4002	RET(V804L)	RET	38	1000
WZ4002	RET(V804M)	RET	37	1000
WZ4002	RIOK1	RIOK1	17	1000
WZ4002	RIOK2	RIOK2	12	1000
WZ4002	RIOK3	RIOK3	20	1000
WZ4002	RIPK1	RIPK1	9.5	1000
WZ4002	RIPK2	RIPK2	100	1000
WZ4002	RIPK4	RIPK4	98	1000
WZ4002	ROCK2	ROCK2	27	1000
WZ4002	ROS1	ROS1	5	1000
WZ4002	RPS6KA4(Kin.Dom.1-N-terminal)	RPS6KA4	72	1000
WZ4002	RPS6KA4(Kin.Dom.2-C-terminal)	RPS6KA4	16	1000
WZ4002	RPS6KA5(Kin.Dom.1-N-terminal)	RPS6KA5	90	1000
WZ4002	RPS6KA5(Kin.Dom.2-C-terminal)	RPS6KA5	94	1000
WZ4002	RSK1(Kin.Dom.1-N-terminal)	RPS6KA1	12	1000
WZ4002	RSK1(Kin.Dom.2-C-terminal)	RPS6KA1	43	1000
WZ4002	RSK2(Kin.Dom.1-N-terminal)	RPS6KA3	40	1000
WZ4002	RSK3(Kin.Dom.1-N-terminal)	RPS6KA2	16	1000
WZ4002	RSK3(Kin.Dom.2-C-terminal)	RPS6KA2	28	1000
WZ4002	RSK4(Kin.Dom.1-N-terminal)	RPS6KA6	54	1000
WZ4002	RSK4(Kin.Dom.2-C-terminal)	RPS6KA6	27	1000
WZ4002	SgK110	SgK110	100	1000
WZ4002	SIK	SIK1	68	1000
WZ4002	SIK2	SIK2	20	1000
WZ4002	SLK	SLK	94	1000
WZ4002	SNARK	NUAK2	0.3	1000
WZ4002	SRC	SRC	100	1000
WZ4002	SRMS	SRMS	74	1000
WZ4002	SRPK1	SRPK1	21	1000
WZ4002	SRPK2	SRPK2	44	1000
WZ4002	SRPK3	SRPK3	8.4	1000
WZ4002	STK16	STK16	27	1000
WZ4002	STK33	STK33	1.3	1000
WZ4002	STK35	STK35	62	1000
WZ4002	STK36	STK36	92	1000
WZ4002	SYK	SYK	79	1000
WZ4002	TAK1	MAP3K7	83	1000
WZ4002	TAOK1	TAOK1	100	1000
WZ4002	TAOK3	TAOK3	57	1000
WZ4002	TEC	TEC	6.6	1000
WZ4002	TESK1	TESK1	86	1000
WZ4002	TGFBR1	TGFBR1	100	1000
WZ4002	TGFBR2	TGFBR2	100	1000
WZ4002	TIE1	TIE1	35	1000
WZ4002	TIE2	TEK	73	1000

WZ4002	TLK1	TLK1	88	1000
WZ4002	TLK2	TLK2	86	1000
WZ4002	TNIK	TNIK	87	1000
WZ4002	TNK1	TNK1	1.9	1000
WZ4002	TNK2	TNK2	18	1000
WZ4002	TNNI3K	TNNI3K	77	1000
WZ4002	TRKA	NTRK1	87	1000
WZ4002	TRKB	NTRK2	100	1000
WZ4002	TRKC	NTRK3	100	1000
WZ4002	TSSK1B	TSSK1B	60	1000
WZ4002	TTK	TTK	2.1	1000
WZ4002	TXK	TXK	16	1000
WZ4002	TYK2(JH1domain-catalytic)	TYK2	100	1000
WZ4002	TYK2(JH2domain-pseudokinase)	TYK2	99	1000
WZ4002	TYRO3	TYRO3	83	1000
WZ4002	ULK1	ULK1	1.6	1000
WZ4002	ULK2	ULK2	2.1	1000
WZ4002	ULK3	ULK3	12	1000
WZ4002	VEGFR2	KDR	52	1000
WZ4002	WEE1	WEE1	75	1000
WZ4002	WEE2	WEE2	100	1000
WZ4002	YANK2	STK32B	60	1000
WZ4002	YANK3	STK32C	95	1000
WZ4002	YES	YES1	61	1000
WZ4002	YSK1	STK25	76	1000
WZ4002	ZAK	ZAK	78	1000
WZ4002	ZAP70	ZAP70	70	1000