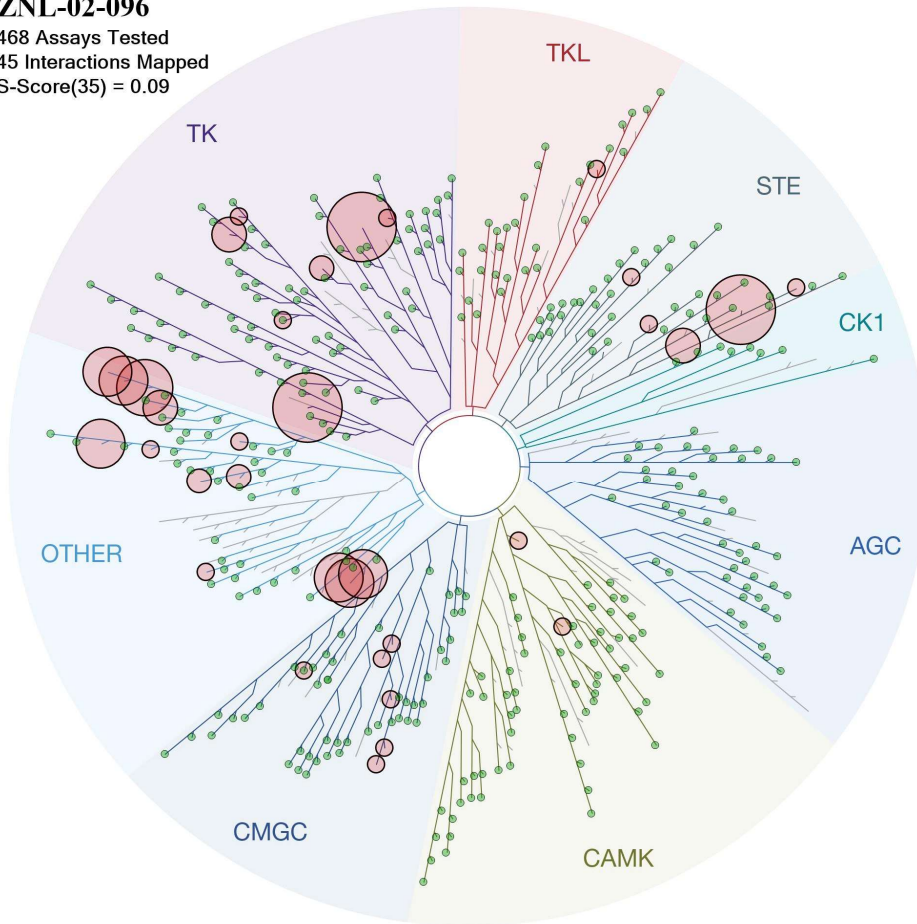
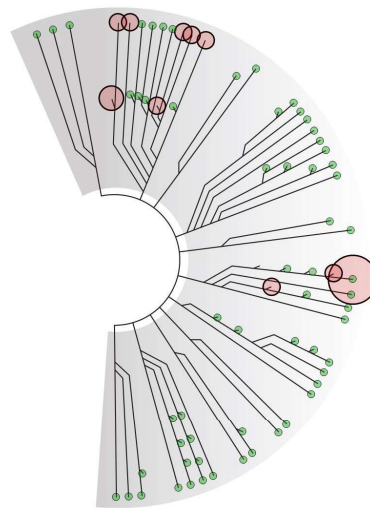
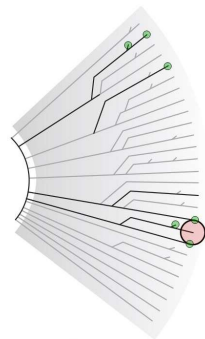


ZNL-02-096
468 Assays Tested
45 Interactions Mapped
S-Score(35) = 0.09

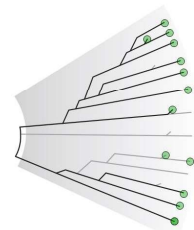


ATYPICAL

MUTANT



LIPID



PATHOGEN



Compound Name	DiscoverX Gene Symbol	Entrez Gene Symbol	Percent Control	Compound Concentration (nM)
ZNL-02-096	AAK1	AAK1	72	1000
ZNL-02-096	ABL1(E255K)-phosphorylated	ABL1	22	1000
ZNL-02-096	ABL1(F317I)-nonphosphorylated	ABL1	81	1000
ZNL-02-096	ABL1(F317I)-phosphorylated	ABL1	95	1000
ZNL-02-096	ABL1(F317L)-nonphosphorylated	ABL1	86	1000
ZNL-02-096	ABL1(F317L)-phosphorylated	ABL1	65	1000
ZNL-02-096	ABL1(H396P)-nonphosphorylated	ABL1	7.2	1000
ZNL-02-096	ABL1(H396P)-phosphorylated	ABL1	30	1000
ZNL-02-096	ABL1(M351T)-phosphorylated	ABL1	26	1000
ZNL-02-096	ABL1(Q252H)-nonphosphorylated	ABL1	21	1000
ZNL-02-096	ABL1(Q252H)-phosphorylated	ABL1	18	1000
ZNL-02-096	ABL1(T315I)-nonphosphorylated	ABL1	92	1000
ZNL-02-096	ABL1(T315I)-phosphorylated	ABL1	58	1000
ZNL-02-096	ABL1(Y253F)-phosphorylated	ABL1	60	1000
ZNL-02-096	ABL1-nonphosphorylated	ABL1	56	1000
ZNL-02-096	ABL1-phosphorylated	ABL1	29	1000
ZNL-02-096	ABL2	ABL2	48	1000
ZNL-02-096	ACVR1	ACVR1	100	1000
ZNL-02-096	ACVR1B	ACVR1B	98	1000
ZNL-02-096	ACVR2A	ACVR2A	100	1000
ZNL-02-096	ACVR2B	ACVR2B	99	1000
ZNL-02-096	ACVRL1	ACVRL1	100	1000
ZNL-02-096	ADCK3	CABC1	60	1000
ZNL-02-096	ADCK4	ADCK4	69	1000
ZNL-02-096	AKT1	AKT1	100	1000
ZNL-02-096	AKT2	AKT2	94	1000
ZNL-02-096	AKT3	AKT3	100	1000
ZNL-02-096	ALK	ALK	94	1000
ZNL-02-096	ALK(C1156Y)	ALK	100	1000
ZNL-02-096	ALK(L1196M)	ALK	82	1000
ZNL-02-096	AMPK-alpha1	PRKAA1	98	1000
ZNL-02-096	AMPK-alpha2	PRKAA2	86	1000
ZNL-02-096	ANKK1	ANKK1	83	1000
ZNL-02-096	ARK5	NUAK1	100	1000
ZNL-02-096	ASK1	MAP3K5	100	1000
ZNL-02-096	ASK2	MAP3K6	100	1000
ZNL-02-096	AURKA	AURKA	65	1000
ZNL-02-096	AURKB	AURKB	68	1000
ZNL-02-096	AURKC	AURKC	3.6	1000
ZNL-02-096	AXL	AXL	89	1000
ZNL-02-096	BIKE	BMP2K	6.7	1000
ZNL-02-096	BLK	BLK	50	1000
ZNL-02-096	BMPR1A	BMPR1A	90	1000
ZNL-02-096	BMPR1B	BMPR1B	84	1000
ZNL-02-096	BMPR2	BMPR2	85	1000

ZNL-02-096	BMX	BMX	78	1000
ZNL-02-096	BRAF	BRAF	77	1000
ZNL-02-096	BRAF(V600E)	BRAF	86	1000
ZNL-02-096	BRK	PTK6	100	1000
ZNL-02-096	BRSK1	BRSK1	100	1000
ZNL-02-096	BRSK2	BRSK2	85	1000
ZNL-02-096	BTK	BTK	100	1000
ZNL-02-096	BUB1	BUB1	98	1000
ZNL-02-096	CAMK1	CAMK1	100	1000
ZNL-02-096	CAMK1B	PNCK	88	1000
ZNL-02-096	CAMK1D	CAMK1D	97	1000
ZNL-02-096	CAMK1G	CAMK1G	100	1000
ZNL-02-096	CAMK2A	CAMK2A	74	1000
ZNL-02-096	CAMK2B	CAMK2B	87	1000
ZNL-02-096	CAMK2D	CAMK2D	98	1000
ZNL-02-096	CAMK2G	CAMK2G	100	1000
ZNL-02-096	CAMK4	CAMK4	97	1000
ZNL-02-096	CAMKK1	CAMKK1	91	1000
ZNL-02-096	CAMKK2	CAMKK2	91	1000
ZNL-02-096	CASK	CASK	24	1000
ZNL-02-096	CDC2L1	CDK11B	87	1000
ZNL-02-096	CDC2L2	CDC2L2	92	1000
ZNL-02-096	CDC2L5	CDK13	88	1000
ZNL-02-096	CDK11	CDK19	95	1000
ZNL-02-096	CDK2	CDK2	80	1000
ZNL-02-096	CDK3	CDK3	90	1000
ZNL-02-096	CDK4	CDK4	66	1000
ZNL-02-096	CDK4-cyclinD1	CDK4	18	1000
ZNL-02-096	CDK4-cyclinD3	CDK4	33	1000
ZNL-02-096	CDK5	CDK5	88	1000
ZNL-02-096	CDK7	CDK7	53	1000
ZNL-02-096	CDK8	CDK8	88	1000
ZNL-02-096	CDK9	CDK9	91	1000
ZNL-02-096	CDKL1	CDKL1	87	1000
ZNL-02-096	CDKL2	CDKL2	83	1000
ZNL-02-096	CDKL3	CDKL3	88	1000
ZNL-02-096	CDKL5	CDKL5	100	1000
ZNL-02-096	CHEK1	CHEK1	94	1000
ZNL-02-096	CHEK2	CHEK2	75	1000
ZNL-02-096	CIT	CIT	64	1000
ZNL-02-096	CLK1	CLK1	86	1000
ZNL-02-096	CLK2	CLK2	67	1000
ZNL-02-096	CLK3	CLK3	100	1000
ZNL-02-096	CLK4	CLK4	92	1000
ZNL-02-096	CSF1R	CSF1R	83	1000
ZNL-02-096	CSF1R-autoinhibited	CSF1R	57	1000
ZNL-02-096	CSK	CSK	93	1000

ZNL-02-096	CSNK1A1	CSNK1A1	77	1000
ZNL-02-096	CSNK1A1L	CSNK1A1L	95	1000
ZNL-02-096	CSNK1D	CSNK1D	87	1000
ZNL-02-096	CSNK1E	CSNK1E	80	1000
ZNL-02-096	CSNK1G1	CSNK1G1	100	1000
ZNL-02-096	CSNK1G2	CSNK1G2	93	1000
ZNL-02-096	CSNK1G3	CSNK1G3	98	1000
ZNL-02-096	CSNK2A1	CSNK2A1	74	1000
ZNL-02-096	CSNK2A2	CSNK2A2	19	1000
ZNL-02-096	CTK	MATK	86	1000
ZNL-02-096	DAPK1	DAPK1	85	1000
ZNL-02-096	DAPK2	DAPK2	72	1000
ZNL-02-096	DAPK3	DAPK3	73	1000
ZNL-02-096	DCAMKL1	DCLK1	68	1000
ZNL-02-096	DCAMKL2	DCLK2	100	1000
ZNL-02-096	DCAMKL3	DCLK3	62	1000
ZNL-02-096	DDR1	DDR1	96	1000
ZNL-02-096	DDR2	DDR2	100	1000
ZNL-02-096	DLK	MAP3K12	63	1000
ZNL-02-096	DMPK	DMPK	100	1000
ZNL-02-096	DMPK2	CDC42BPG	94	1000
ZNL-02-096	DRAK1	STK17A	100	1000
ZNL-02-096	DRAK2	STK17B	100	1000
ZNL-02-096	DYRK1A	DYRK1A	100	1000
ZNL-02-096	DYRK1B	DYRK1B	15	1000
ZNL-02-096	DYRK2	DYRK2	95	1000
ZNL-02-096	EGFR	EGFR	82	1000
ZNL-02-096	EGFR(E746-A750del)	EGFR	49	1000
ZNL-02-096	EGFR(G719C)	EGFR	68	1000
ZNL-02-096	EGFR(G719S)	EGFR	73	1000
ZNL-02-096	EGFR(L747-E749del, A750P)	EGFR	64	1000
ZNL-02-096	EGFR(L747-S752del, P753S)	EGFR	54	1000
ZNL-02-096	EGFR(L747-T751del,Sins)	EGFR	56	1000
ZNL-02-096	EGFR(L858R)	EGFR	70	1000
ZNL-02-096	EGFR(L858R,T790M)	EGFR	96	1000
ZNL-02-096	EGFR(L861Q)	EGFR	52	1000
ZNL-02-096	EGFR(S752-I759del)	EGFR	83	1000
ZNL-02-096	EGFR(T790M)	EGFR	91	1000
ZNL-02-096	EIF2AK1	EIF2AK1	69	1000
ZNL-02-096	EPHA1	EPHA1	86	1000
ZNL-02-096	EPHA2	EPHA2	90	1000
ZNL-02-096	EPHA3	EPHA3	100	1000
ZNL-02-096	EPHA4	EPHA4	93	1000
ZNL-02-096	EPHA5	EPHA5	88	1000
ZNL-02-096	EPHA6	EPHA6	97	1000
ZNL-02-096	EPHA7	EPHA7	60	1000
ZNL-02-096	EPHA8	EPHA8	43	1000

ZNL-02-096	EPHB1	EPHB1	79	1000
ZNL-02-096	EPHB2	EPHB2	66	1000
ZNL-02-096	EPHB3	EPHB3	81	1000
ZNL-02-096	EPHB4	EPHB4	92	1000
ZNL-02-096	EPHB6	EPHB6	0	1000
ZNL-02-096	ERBB2	ERBB2	77	1000
ZNL-02-096	ERBB3	ERBB3	68	1000
ZNL-02-096	ERBB4	ERBB4	62	1000
ZNL-02-096	ERK1	MAPK3	92	1000
ZNL-02-096	ERK2	MAPK1	73	1000
ZNL-02-096	ERK3	MAPK6	23	1000
ZNL-02-096	ERK4	MAPK4	25	1000
ZNL-02-096	ERK5	MAPK7	95	1000
ZNL-02-096	ERK8	MAPK15	89	1000
ZNL-02-096	ERN1	ERN1	91	1000
ZNL-02-096	FAK	PTK2	88	1000
ZNL-02-096	FER	FER	95	1000
ZNL-02-096	FES	FES	95	1000
ZNL-02-096	FGFR1	FGFR1	74	1000
ZNL-02-096	FGFR2	FGFR2	90	1000
ZNL-02-096	FGFR3	FGFR3	93	1000
ZNL-02-096	FGFR3(G697C)	FGFR3	87	1000
ZNL-02-096	FGFR4	FGFR4	99	1000
ZNL-02-096	FGR	FGR	42	1000
ZNL-02-096	FLT1	FLT1	86	1000
ZNL-02-096	FLT3	FLT3	49	1000
ZNL-02-096	FLT3(D835H)	FLT3	47	1000
ZNL-02-096	FLT3(D835V)	FLT3	0.8	1000
ZNL-02-096	FLT3(D835Y)	FLT3	29	1000
ZNL-02-096	FLT3(ITD)	FLT3	74	1000
ZNL-02-096	FLT3(ITD,D835V)	FLT3	28	1000
ZNL-02-096	FLT3(ITD,F691L)	FLT3	88	1000
ZNL-02-096	FLT3(K663Q)	FLT3	63	1000
ZNL-02-096	FLT3(N841I)	FLT3	36	1000
ZNL-02-096	FLT3(R834Q)	FLT3	89	1000
ZNL-02-096	FLT3-autoinhibited	FLT3	86	1000
ZNL-02-096	FLT4	FLT4	98	1000
ZNL-02-096	FRK	FRK	53	1000
ZNL-02-096	FYN	FYN	79	1000
ZNL-02-096	GAK	GAK	5.5	1000
ZNL-02-096	GCN2(Kin.Dom.2,S808G)	EIF2AK4	0.25	1000
ZNL-02-096	GRK1	GRK1	58	1000
ZNL-02-096	GRK2	ADRBK1	81	1000
ZNL-02-096	GRK3	ADRBK2	72	1000
ZNL-02-096	GRK4	GRK4	100	1000
ZNL-02-096	GRK7	GRK7	70	1000
ZNL-02-096	GSK3A	GSK3A	100	1000

ZNL-02-096	GSK3B	GSK3B	81	1000
ZNL-02-096	HASPIN	GSG2	74	1000
ZNL-02-096	HCK	HCK	50	1000
ZNL-02-096	HIPK1	HIPK1	27	1000
ZNL-02-096	HIPK2	HIPK2	31	1000
ZNL-02-096	HIPK3	HIPK3	45	1000
ZNL-02-096	HIPK4	HIPK4	40	1000
ZNL-02-096	HPK1	MAP4K1	29	1000
ZNL-02-096	HUNK	HUNK	87	1000
ZNL-02-096	ICK	ICK	96	1000
ZNL-02-096	IGF1R	IGF1R	85	1000
ZNL-02-096	IKK-alpha	CHUK	81	1000
ZNL-02-096	IKK-beta	IKBKB	89	1000
ZNL-02-096	IKK-epsilon	IKBKE	38	1000
ZNL-02-096	INSR	INSR	71	1000
ZNL-02-096	INSRR	INSRR	100	1000
ZNL-02-096	IRAK1	IRAK1	88	1000
ZNL-02-096	IRAK3	IRAK3	100	1000
ZNL-02-096	IRAK4	IRAK4	96	1000
ZNL-02-096	ITK	ITK	88	1000
ZNL-02-096	JAK1(JH1domain-catalytic)	JAK1	100	1000
ZNL-02-096	JAK1(JH2domain-pseudokinase)	JAK1	67	1000
ZNL-02-096	JAK2(JH1domain-catalytic)	JAK2	40	1000
ZNL-02-096	JAK3(JH1domain-catalytic)	JAK3	0	1000
ZNL-02-096	JNK1	MAPK8	79	1000
ZNL-02-096	JNK2	MAPK9	100	1000
ZNL-02-096	JNK3	MAPK10	88	1000
ZNL-02-096	KIT	KIT	75	1000
ZNL-02-096	KIT(A829P)	KIT	82	1000
ZNL-02-096	KIT(D816H)	KIT	90	1000
ZNL-02-096	KIT(D816V)	KIT	79	1000
ZNL-02-096	KIT(L576P)	KIT	67	1000
ZNL-02-096	KIT(V559D)	KIT	86	1000
ZNL-02-096	KIT(V559D,T670I)	KIT	97	1000
ZNL-02-096	KIT(V559D,V654A)	KIT	100	1000
ZNL-02-096	KIT-autoinhibited	KIT	78	1000
ZNL-02-096	LATS1	LATS1	84	1000
ZNL-02-096	LATS2	LATS2	100	1000
ZNL-02-096	LCK	LCK	4.3	1000
ZNL-02-096	LIMK1	LIMK1	100	1000
ZNL-02-096	LIMK2	LIMK2	90	1000
ZNL-02-096	LKB1	STK11	39	1000
ZNL-02-096	LOK	STK10	92	1000
ZNL-02-096	LRRK2	LRRK2	79	1000
ZNL-02-096	LRRK2(G2019S)	LRRK2	83	1000
ZNL-02-096	LTK	LTK	94	1000
ZNL-02-096	LYN	LYN	54	1000

ZNL-02-096	LZK	MAP3K13	100	1000
ZNL-02-096	MAK	MAK	90	1000
ZNL-02-096	MAP3K1	MAP3K1	67	1000
ZNL-02-096	MAP3K15	MAP3K15	75	1000
ZNL-02-096	MAP3K2	MAP3K2	44	1000
ZNL-02-096	MAP3K3	MAP3K3	24	1000
ZNL-02-096	MAP3K4	MAP3K4	2	1000
ZNL-02-096	MAP4K2	MAP4K2	100	1000
ZNL-02-096	MAP4K3	MAP4K3	57	1000
ZNL-02-096	MAP4K4	MAP4K4	84	1000
ZNL-02-096	MAP4K5	MAP4K5	54	1000
ZNL-02-096	MAPKAPK2	MAPKAPK2	100	1000
ZNL-02-096	MAPKAPK5	MAPKAPK5	100	1000
ZNL-02-096	MARK1	MARK1	83	1000
ZNL-02-096	MARK2	MARK2	100	1000
ZNL-02-096	MARK3	MARK3	93	1000
ZNL-02-096	MARK4	MARK4	65	1000
ZNL-02-096	MAST1	MAST1	84	1000
ZNL-02-096	MEK1	MAP2K1	100	1000
ZNL-02-096	MEK2	MAP2K2	86	1000
ZNL-02-096	MEK3	MAP2K3	93	1000
ZNL-02-096	MEK4	MAP2K4	96	1000
ZNL-02-096	MEK5	MAP2K5	22	1000
ZNL-02-096	MEK6	MAP2K6	100	1000
ZNL-02-096	MELK	MELK	100	1000
ZNL-02-096	MERTK	MERTK	98	1000
ZNL-02-096	MET	MET	94	1000
ZNL-02-096	MET(M1250T)	MET	85	1000
ZNL-02-096	MET(Y1235D)	MET	100	1000
ZNL-02-096	MINK	MINK1	70	1000
ZNL-02-096	MKK7	MAP2K7	84	1000
ZNL-02-096	MKNK1	MKNK1	73	1000
ZNL-02-096	MKNK2	MKNK2	89	1000
ZNL-02-096	MLCK	MYLK3	100	1000
ZNL-02-096	MLK1	MAP3K9	76	1000
ZNL-02-096	MLK2	MAP3K10	97	1000
ZNL-02-096	MLK3	MAP3K11	81	1000
ZNL-02-096	MRCKA	CDC42BPA	90	1000
ZNL-02-096	MRCKB	CDC42BPB	100	1000
ZNL-02-096	MST1	STK4	97	1000
ZNL-02-096	MST1R	MST1R	94	1000
ZNL-02-096	MST2	STK3	99	1000
ZNL-02-096	MST3	STK24	97	1000
ZNL-02-096	MST4	MST4	100	1000
ZNL-02-096	MTOR	MTOR	100	1000
ZNL-02-096	MUSK	MUSK	63	1000
ZNL-02-096	MYLK	MYLK	57	1000

ZNL-02-096	MYLK2	MYLK2	76	1000
ZNL-02-096	MYLK4	MYLK4	96	1000
ZNL-02-096	MYO3A	MYO3A	90	1000
ZNL-02-096	MYO3B	MYO3B	70	1000
ZNL-02-096	NDR1	STK38	83	1000
ZNL-02-096	NDR2	STK38L	100	1000
ZNL-02-096	NEK1	NEK1	56	1000
ZNL-02-096	NEK10	NEK10	93	1000
ZNL-02-096	NEK11	NEK11	27	1000
ZNL-02-096	NEK2	NEK2	40	1000
ZNL-02-096	NEK3	NEK3	0.35	1000
ZNL-02-096	NEK4	NEK4	98	1000
ZNL-02-096	NEK5	NEK5	74	1000
ZNL-02-096	NEK6	NEK6	71	1000
ZNL-02-096	NEK7	NEK7	70	1000
ZNL-02-096	NEK9	NEK9	64	1000
ZNL-02-096	NIK	MAP3K14	100	1000
ZNL-02-096	NIM1	MGC42105	100	1000
ZNL-02-096	NLK	NLK	100	1000
ZNL-02-096	OSR1	OXS1	73	1000
ZNL-02-096	p38-alpha	MAPK14	87	1000
ZNL-02-096	p38-beta	MAPK11	80	1000
ZNL-02-096	p38-delta	MAPK13	93	1000
ZNL-02-096	p38-gamma	MAPK12	68	1000
ZNL-02-096	PAK1	PAK1	84	1000
ZNL-02-096	PAK2	PAK2	100	1000
ZNL-02-096	PAK3	PAK3	83	1000
ZNL-02-096	PAK4	PAK4	80	1000
ZNL-02-096	PAK6	PAK6	100	1000
ZNL-02-096	PAK7	PAK7	95	1000
ZNL-02-096	PCTK1	CDK16	90	1000
ZNL-02-096	PCTK2	CDK17	69	1000
ZNL-02-096	PCTK3	CDK18	86	1000
ZNL-02-096	PDGFRA	PDGFRA	100	1000
ZNL-02-096	PDGFRB	PDGFRB	63	1000
ZNL-02-096	PDPK1	PDPK1	96	1000
ZNL-02-096	PFCDPK1(P.falciparum)	CDPK1	80	1000
ZNL-02-096	PFPK5(P.falciparum)	MAL13P1.279	86	1000
ZNL-02-096	PFTAIRE2	CDK15	100	1000
ZNL-02-096	PFTK1	CDK14	87	1000
ZNL-02-096	PHKG1	PHKG1	100	1000
ZNL-02-096	PHKG2	PHKG2	81	1000
ZNL-02-096	PIK3C2B	PIK3C2B	98	1000
ZNL-02-096	PIK3C2G	PIK3C2G	59	1000
ZNL-02-096	PIK3CA	PIK3CA	99	1000
ZNL-02-096	PIK3CA(C420R)	PIK3CA	93	1000
ZNL-02-096	PIK3CA(E542K)	PIK3CA	67	1000

ZNL-02-096	PIK3CA(E545A)	PIK3CA	93	1000
ZNL-02-096	PIK3CA(E545K)	PIK3CA	63	1000
ZNL-02-096	PIK3CA(H1047L)	PIK3CA	71	1000
ZNL-02-096	PIK3CA(H1047Y)	PIK3CA	87	1000
ZNL-02-096	PIK3CA(I800L)	PIK3CA	73	1000
ZNL-02-096	PIK3CA(M1043I)	PIK3CA	80	1000
ZNL-02-096	PIK3CA(Q546K)	PIK3CA	100	1000
ZNL-02-096	PIK3CB	PIK3CB	90	1000
ZNL-02-096	PIK3CD	PIK3CD	88	1000
ZNL-02-096	PIK3CG	PIK3CG	73	1000
ZNL-02-096	PIK4CB	PI4KB	51	1000
ZNL-02-096	PIKFYVE	PIKFYVE	81	1000
ZNL-02-096	PIM1	PIM1	98	1000
ZNL-02-096	PIM2	PIM2	100	1000
ZNL-02-096	PIM3	PIM3	97	1000
ZNL-02-096	PIP5K1A	PIP5K1A	90	1000
ZNL-02-096	PIP5K1C	PIP5K1C	83	1000
ZNL-02-096	PIP5K2B	PIP4K2B	74	1000
ZNL-02-096	PIP5K2C	PIP4K2C	72	1000
ZNL-02-096	PKAC-alpha	PRKACA	96	1000
ZNL-02-096	PKAC-beta	PRKACB	93	1000
ZNL-02-096	PKMYT1	PKMYT1	60	1000
ZNL-02-096	PKN1	PKN1	51	1000
ZNL-02-096	PKN2	PKN2	100	1000
ZNL-02-096	PKNB(M.tuberculosis)	pknB	20	1000
ZNL-02-096	PLK1	PLK1	0.1	1000
ZNL-02-096	PLK2	PLK2	0.65	1000
ZNL-02-096	PLK3	PLK3	0.5	1000
ZNL-02-096	PLK4	PLK4	69	1000
ZNL-02-096	PRKCD	PRKCD	56	1000
ZNL-02-096	PRKCE	PRKCE	53	1000
ZNL-02-096	PRKCH	PRKCH	100	1000
ZNL-02-096	PRKCI	PRKCI	83	1000
ZNL-02-096	PRKCQ	PRKCQ	42	1000
ZNL-02-096	PRKD1	PRKD1	74	1000
ZNL-02-096	PRKD2	PRKD2	88	1000
ZNL-02-096	PRKD3	PRKD3	77	1000
ZNL-02-096	PRKG1	PRKG1	100	1000
ZNL-02-096	PRKG2	PRKG2	88	1000
ZNL-02-096	PRKR	EIF2AK2	98	1000
ZNL-02-096	PRKX	PRKX	100	1000
ZNL-02-096	PRP4	PRPF4B	100	1000
ZNL-02-096	PYK2	PTK2B	68	1000
ZNL-02-096	QSK	KIAA0999	93	1000
ZNL-02-096	RAF1	RAF1	100	1000
ZNL-02-096	RET	RET	89	1000
ZNL-02-096	RET(M918T)	RET	100	1000

ZNL-02-096	RET(V804L)	RET	100	1000
ZNL-02-096	RET(V804M)	RET	100	1000
ZNL-02-096	RIOK1	RIOK1	68	1000
ZNL-02-096	RIOK2	RIOK2	93	1000
ZNL-02-096	RIOK3	RIOK3	7.4	1000
ZNL-02-096	RIPK1	RIPK1	99	1000
ZNL-02-096	RIPK2	RIPK2	100	1000
ZNL-02-096	RIPK4	RIPK4	75	1000
ZNL-02-096	RIPK5	DSTYK	100	1000
ZNL-02-096	ROCK1	ROCK1	88	1000
ZNL-02-096	ROCK2	ROCK2	74	1000
ZNL-02-096	ROS1	ROS1	100	1000
ZNL-02-096	RPS6KA4(Kin.Dom.1-N-terminal)	RPS6KA4	100	1000
ZNL-02-096	RPS6KA4(Kin.Dom.2-C-terminal)	RPS6KA4	100	1000
ZNL-02-096	RPS6KA5(Kin.Dom.1-N-terminal)	RPS6KA5	90	1000
ZNL-02-096	RPS6KA5(Kin.Dom.2-C-terminal)	RPS6KA5	90	1000
ZNL-02-096	RSK1(Kin.Dom.1-N-terminal)	RPS6KA1	93	1000
ZNL-02-096	RSK1(Kin.Dom.2-C-terminal)	RPS6KA1	97	1000
ZNL-02-096	RSK2(Kin.Dom.1-N-terminal)	RPS6KA3	89	1000
ZNL-02-096	RSK2(Kin.Dom.2-C-terminal)	RPS6KA3	85	1000
ZNL-02-096	RSK3(Kin.Dom.1-N-terminal)	RPS6KA2	93	1000
ZNL-02-096	RSK3(Kin.Dom.2-C-terminal)	RPS6KA2	96	1000
ZNL-02-096	RSK4(Kin.Dom.1-N-terminal)	RPS6KA6	93	1000
ZNL-02-096	RSK4(Kin.Dom.2-C-terminal)	RPS6KA6	65	1000
ZNL-02-096	S6K1	RPS6KB1	72	1000
ZNL-02-096	SBK1	SBK1	79	1000
ZNL-02-096	SGK	SGK1	100	1000
ZNL-02-096	SgK110	SgK110	97	1000
ZNL-02-096	SGK2	SGK2	89	1000
ZNL-02-096	SGK3	SGK3	100	1000
ZNL-02-096	SIK	SIK1	67	1000
ZNL-02-096	SIK2	SIK2	52	1000
ZNL-02-096	SLK	SLK	41	1000
ZNL-02-096	SNARK	NUAK2	80	1000
ZNL-02-096	SNRK	SNRK	80	1000
ZNL-02-096	SRC	SRC	29	1000
ZNL-02-096	SRMS	SRMS	92	1000
ZNL-02-096	SRPK1	SRPK1	100	1000
ZNL-02-096	SRPK2	SRPK2	79	1000
ZNL-02-096	SRPK3	SRPK3	100	1000
ZNL-02-096	STK16	STK16	81	1000
ZNL-02-096	STK33	STK33	19	1000
ZNL-02-096	STK35	STK35	100	1000
ZNL-02-096	STK36	STK36	59	1000
ZNL-02-096	STK39	STK39	39	1000
ZNL-02-096	SYK	SYK	53	1000
ZNL-02-096	TAK1	MAP3K7	82	1000

ZNL-02-096	TAOK1	TAOK1	100	1000
ZNL-02-096	TAOK2	TAOK2	82	1000
ZNL-02-096	TAOK3	TAOK3	71	1000
ZNL-02-096	TBK1	TBK1	15	1000
ZNL-02-096	TEC	TEC	69	1000
ZNL-02-096	TESK1	TESK1	69	1000
ZNL-02-096	TGFBR1	TGFBR1	87	1000
ZNL-02-096	TGFBR2	TGFBR2	97	1000
ZNL-02-096	TIE1	TIE1	86	1000
ZNL-02-096	TIE2	TEK	88	1000
ZNL-02-096	TLK1	TLK1	80	1000
ZNL-02-096	TLK2	TLK2	100	1000
ZNL-02-096	TNIK	TNIK	94	1000
ZNL-02-096	TNK1	TNK1	57	1000
ZNL-02-096	TNK2	TNK2	86	1000
ZNL-02-096	TNNI3K	TNNI3K	32	1000
ZNL-02-096	TRKA	NTRK1	22	1000
ZNL-02-096	TRKB	NTRK2	77	1000
ZNL-02-096	TRKC	NTRK3	80	1000
ZNL-02-096	TRPM6	TRPM6	100	1000
ZNL-02-096	TSSK1B	TSSK1B	70	1000
ZNL-02-096	TSSK3	TSSK3	99	1000
ZNL-02-096	TTK	TTK	100	1000
ZNL-02-096	TXK	TXK	55	1000
ZNL-02-096	TYK2(JH1domain-catalytic)	TYK2	54	1000
ZNL-02-096	TYK2(JH2domain-pseudokinase)	TYK2	5	1000
ZNL-02-096	TYRO3	TYRO3	96	1000
ZNL-02-096	ULK1	ULK1	72	1000
ZNL-02-096	ULK2	ULK2	57	1000
ZNL-02-096	ULK3	ULK3	78	1000
ZNL-02-096	VEGFR2	KDR	81	1000
ZNL-02-096	VPS34	PIK3C3	88	1000
ZNL-02-096	VRK2	VRK2	87	1000
ZNL-02-096	WEE1	WEE1	0.15	1000
ZNL-02-096	WEE2	WEE2	0.7	1000
ZNL-02-096	WNK1	WNK1	100	1000
ZNL-02-096	WNK2	WNK2	98	1000
ZNL-02-096	WNK3	WNK3	96	1000
ZNL-02-096	WNK4	WNK4	100	1000
ZNL-02-096	YANK1	STK32A	93	1000
ZNL-02-096	YANK2	STK32B	100	1000
ZNL-02-096	YANK3	STK32C	94	1000
ZNL-02-096	YES	YES1	52	1000
ZNL-02-096	YSK1	STK25	62	1000
ZNL-02-096	YSK4	MAP3K19	0	1000
ZNL-02-096	ZAK	ZAK	88	1000
ZNL-02-096	ZAP70	ZAP70	100	1000